

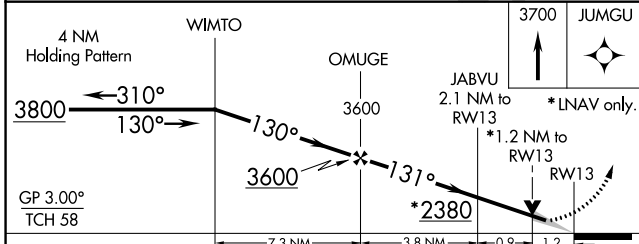
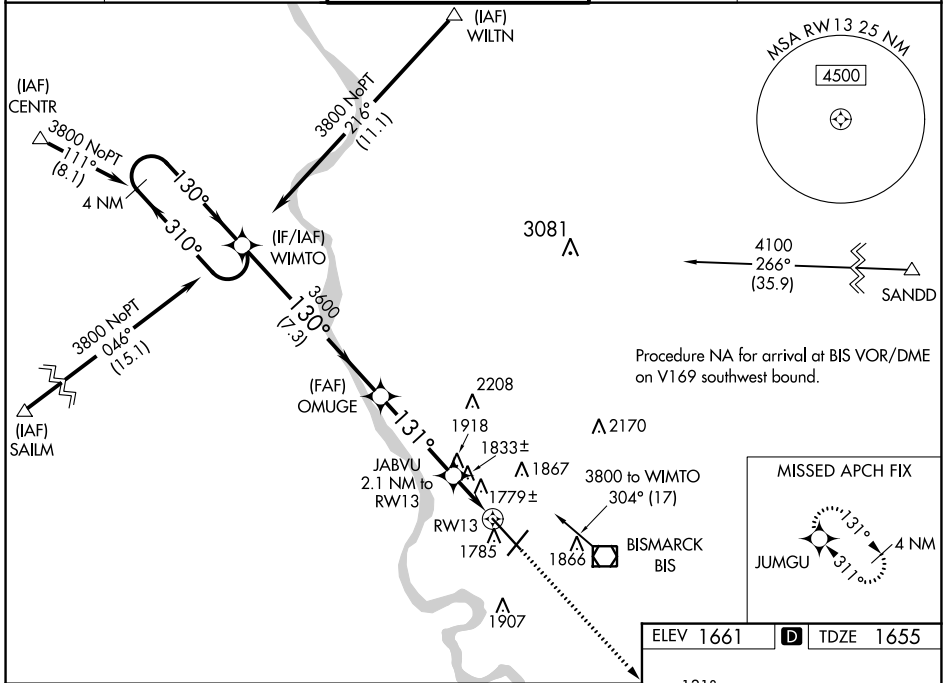
WAAS CH 86920 W13A	APP CRS 131°	Rwy Idg 8794 TDZE 1655 Apt Elev 1661
--	------------------------	---

RNAV (GPS) RWY 13

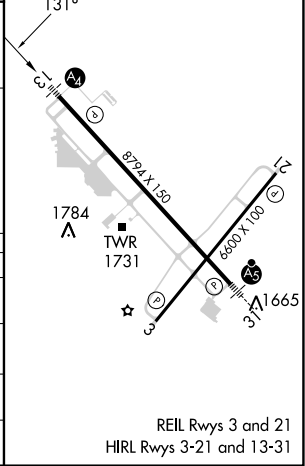
BISMARCK MUNI (BIS)

<p>ASR</p>	<p>Inoperative table does not apply. For uncompensated Baro-VNAV systems, LNAV/VNAV NA below -18°C (0°F) or above 33°C (91°F). DME/DME RNP-0.3 NA.</p>	<p>MALS</p>	<p>MISSED APPROACH: Climb to 3700 direct JUMGU and hold.</p>

<p>ATIS</p> <p>119.35</p>	<p>BISMARCK APP CON *</p> <p>126.3 298.9</p>	<p>BISMARCK TOWER *</p> <p>118.3 (CTAF) 0 257.8</p>	<p>GND CON</p> <p>121.9</p>	<p>UNICOM</p> <p>122.95</p>
----------------------------------	---	--	------------------------------------	------------------------------------



ELEV 1661	D TDZE 1655
-----------	--------------------



CATEGORY	A	B	C	D
LPV DA	1855-3/4		200 (200-3/4)	
LNAV/VNAV DA	2083-1 3/8		428 (500-1 3/8)	
LNAV MDA	2100-1	445 (500-1)	2100-1 3/8	445 (500-1 3/8)
C CIRCLING	2200-1	539 (600-1)	2460-2 1/4	2460-2 1/2
			799 (800-2 1/4)	799 (800-2 1/2)

REIL Rws 3 and 21
HIRL Rws 3-21 and 13-31

NC-1, 08 AUG 2024 to 05 SEP 2024

NC-1, 08 AUG 2024 to 05 SEP 2024