

WAAS CH 53605 W24A	APP CRS 239°	Rwy Idg 10801 TDZE 641 Apt Elev 650
--	------------------------	--

RNAV (GPS) Y RWY 24

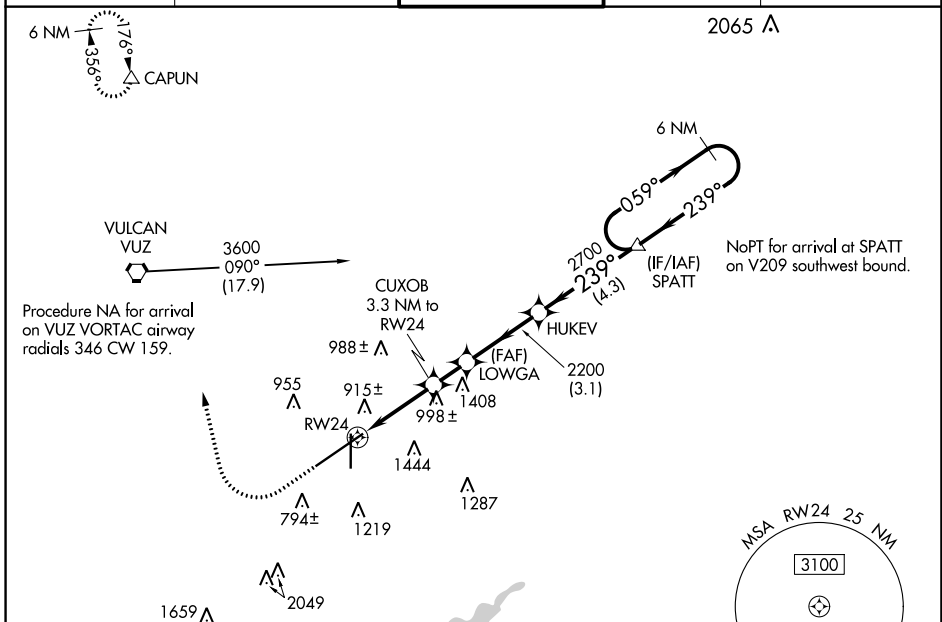
BIRMINGHAM-SHUTTLESWORTH INTL (BHM)

▼ For uncompensated Baro-VNAV systems, LNAV/VNAV NA below -8°C (18°F) or above 54°C (130°F). Rwy 24 helicopter visibility reduction below RVR 4000 NA. DME/DME RNP-0.3 NA. For inop ALS, increase LPV Cat E visibility to RVR 4000, LNAV/VNAV all Cats visibility to 1½ SM and LNAV Cat A/B visibility to RVR 5500, and Cat C/D/E to 1¼ SM. ** RVR 1800 authorized with use of FD or AP or HUD to DA.

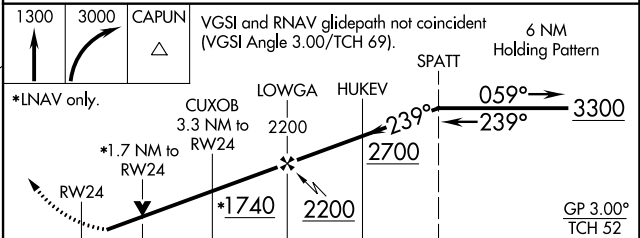
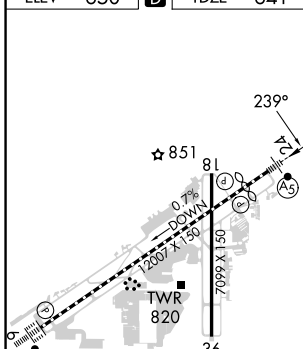


MISSED APPROACH: Climb to 1300 then climbing right turn to 3000 direct CAPUN and hold.

ATIS 119.4 270.1	BIRMINGHAM APP CON 123.8 256.8	BIRMINGHAM TOWER 119.9 317.725	GND CON 121.7 348.6	CLNC DEL 125.675 305.2
----------------------------	--	--	-------------------------------	----------------------------------



ELEV 650	D	TDZE 641
----------	----------	----------



CATEGORY	A	B	C	D	E
LPV DA**	841/24		200 (200-½)		
LNAV/VNAV DA	1200-1½		559 (600-1½)		
LNAV MDA	1260/40	619 (700-¾)	1260-1⅜		619 (700-1⅜)

SE-4, 03 OCT 2024 to 31 OCT 2024

SE-4, 03 OCT 2024 to 31 OCT 2024