

APP CRS **058°**
 Rwy ldg **12007**
 TDZE **606**
 Apt Elev **650**

RNAV (RNP) Z RWY 6

BIRMINGHAM-SHUTTLESWORTH INTL (BHM)

RNP AR APCH. RF required.

ALSF-2

▼ For uncompensated Baro-VNAV systems, procedure NA below -8°C or above 54°C.



MISSED APPROACH: Climb to 3000 on track 058° to KEGTE left turn to CILAL and track 243° to VLKNN and hold.

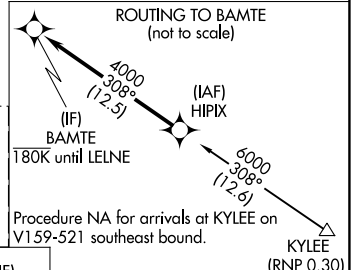
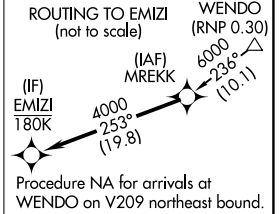
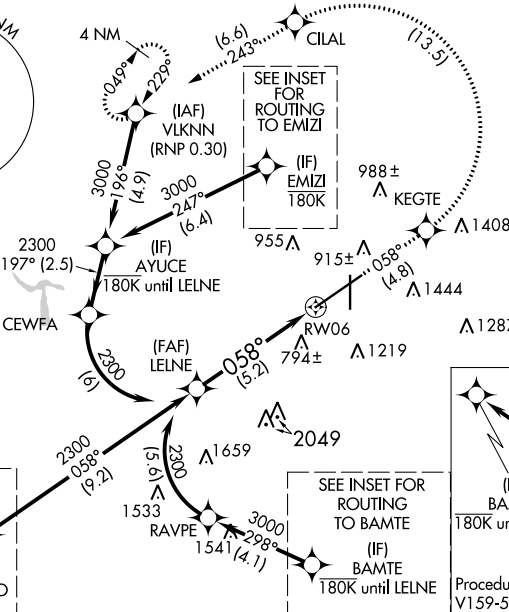
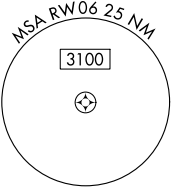
ATIS
119.4 270.1

BIRMINGHAM APP CON
123.8 256.8

BIRMINGHAM TOWER
119.9 317.725

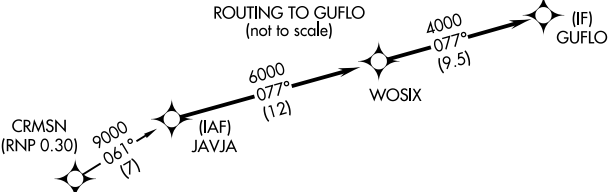
GND CON
121.7 348.6

CLNC DEL
125.675 305.2

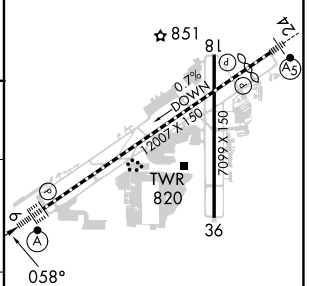
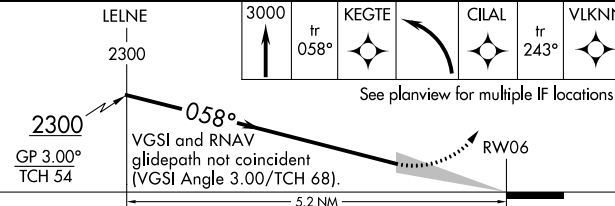


SEE INSET FOR ROUTING TO GUFLO

SEE INSET FOR ROUTING TO BAMTE



ELEV 650 TDZE 606



CATEGORY	A	B	C	D
RNP 0.30 DA		1138/55	532 (500-1)	

REIL Rws 18 and 36
 TDZ/CL Rwy 6
 HIRL Rwy 6-24
 MIRL Rwy 18-36

AUTHORIZATION REQUIRED

SE-4, 03 OCT 2024 to 31 OCT 2024

SE-4, 03 OCT 2024 to 31 OCT 2024