

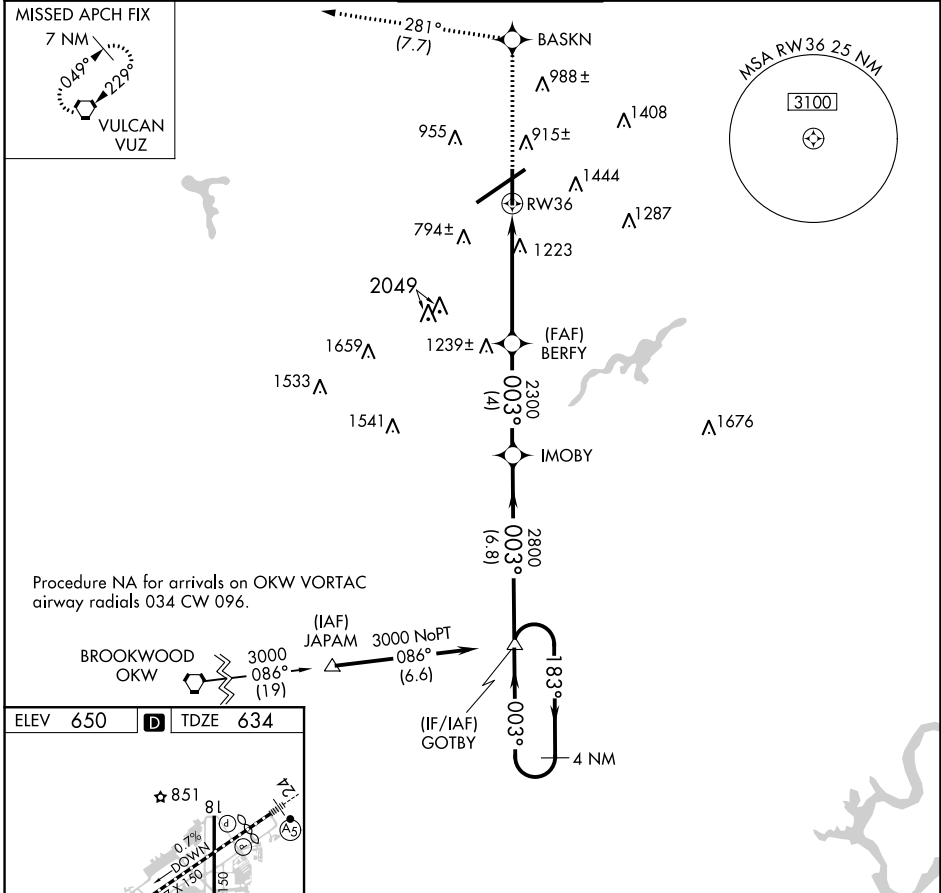
# RNAV (GPS) RWY 36

BIRMINGHAM-SHUTTLESWORTH INTL (BHM)

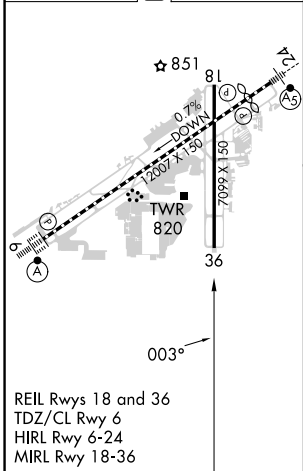
APP CRS <b>003°</b>	Rwy Idg TDZE Apt Elev	<b>7099</b> <b>634</b> <b>650</b>
------------------------	-----------------------------	---

**▼** DME/DME RNP-0.3 NA. Rwy 36 helicopter visibility reduction below 1 SM NA. Procedure NA at night. **▲** MISSED APPROACH: Climb to 3000 direct BASKN and on track 281° to VUZ VORTAC and hold.

ATIS <b>119.4 270.1</b>	BIRMINGHAM APP CON <b>123.8 256.8</b>	BIRMINGHAM TOWER <b>119.9 317.725</b>	GND CON <b>121.7 348.6</b>	CLNC DEL <b>125.675 305.2</b>
----------------------------	--	--	-------------------------------	----------------------------------



ELEV 650	<b>D</b>	TDZE 634
----------	----------	----------



3000	BASKN	VUZ	Visual Segment - Obstacles.		4 NM
↑	tr 281°	tr 281°	IMOBY	GOTBY	Holding Pattern
			BERFY		
	RW36		2300	183°	3000
			2800	003°	003°
CATEGORY	A	B	C	D	
LNAV MDA	1480-1 847 (900-1)	1480-1¼ 847 (900-1¼)	1480-2½	847 (900-2½)	

# RNAV (GPS) RWY 36

SE-4, 03 OCT 2024 to 31 OCT 2024

SE-4, 03 OCT 2024 to 31 OCT 2024