

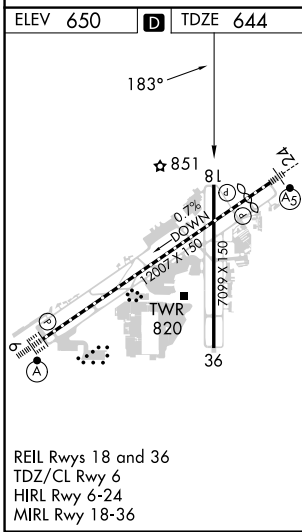
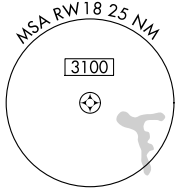
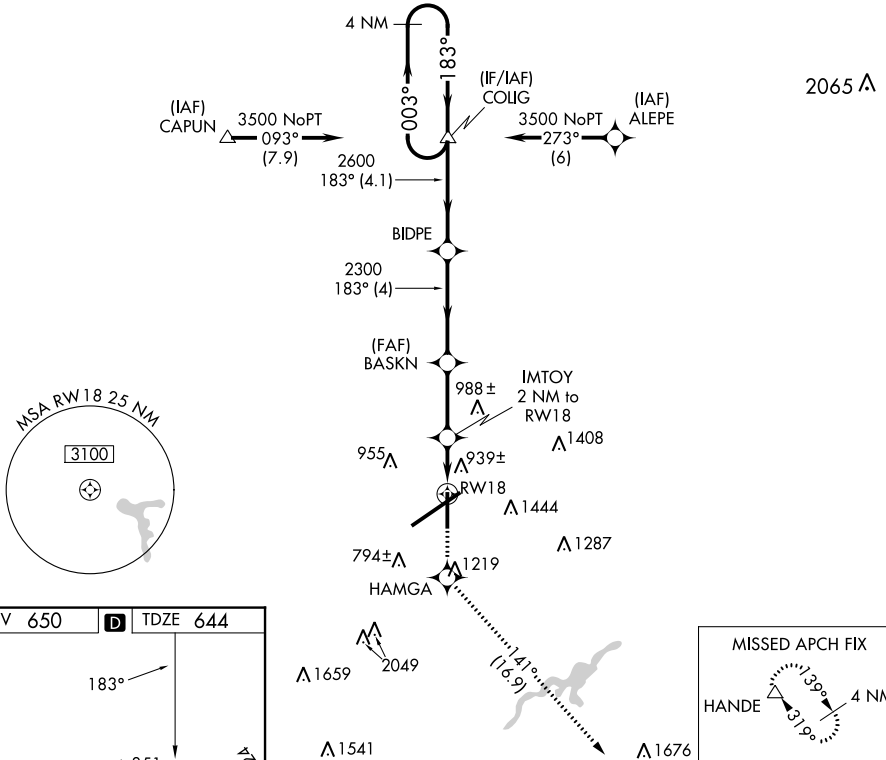
APP CRS 183°	Rwy Idg TDZE Apt Elev	7099 644 650
------------------------	-----------------------------	---

RNAV (GPS) RWY 18
BIRMINGHAM-SHUTTLESWORTH INTL (BHM)

▼ Rwy 18 helicopter visibility reduction below 3/4 SM NA.
DME/DME RNP-0.3 NA.

MISSED APPROACH: Climb to 3800 direct
HAMGA and on track 141° to HANDE and hold.

ATIS 119.4 270.1	BIRMINGHAM APP CON 123.8 256.8	BIRMINGHAM TOWER 119.9 317.725	GND CON 121.7 348.6	CLNC DEL 125.675 305.2
----------------------------	--	--	-------------------------------	----------------------------------



3800	HAMGA	tr 141°	HANDE	MISSED APCH FIX HANDE 139° 319° 4 NM	
3800	HAMGA	tr 141°	HANDE	4 NM Holding Pattern	
1380	1380	2300	2600	3500	3500
1.5	0.5 NM	2.7 NM	4 NM	4.1 NM	
1.5	0.5 NM	2.7 NM	4 NM	4.1 NM	
1200-1	556 (600-1)	1200-1 5/8	556 (600-1 5/8)	1200-1 3/4	556 (600-1 3/4)
LNVAI MDA	1200-1	556 (600-1)	1200-1 5/8	556 (600-1 5/8)	1200-1 3/4

SE-4, 08 AUG 2024 to 05 SEP 2024

SE-4, 08 AUG 2024 to 05 SEP 2024