

BILOXI, MISSISSIPPI

RNAV (GPS) RWY 4

APCH CRS 037°	Rwy ldg TDZE Arprt Elev	6030 23 33
-------------------------	-------------------------------	---------------------------------------

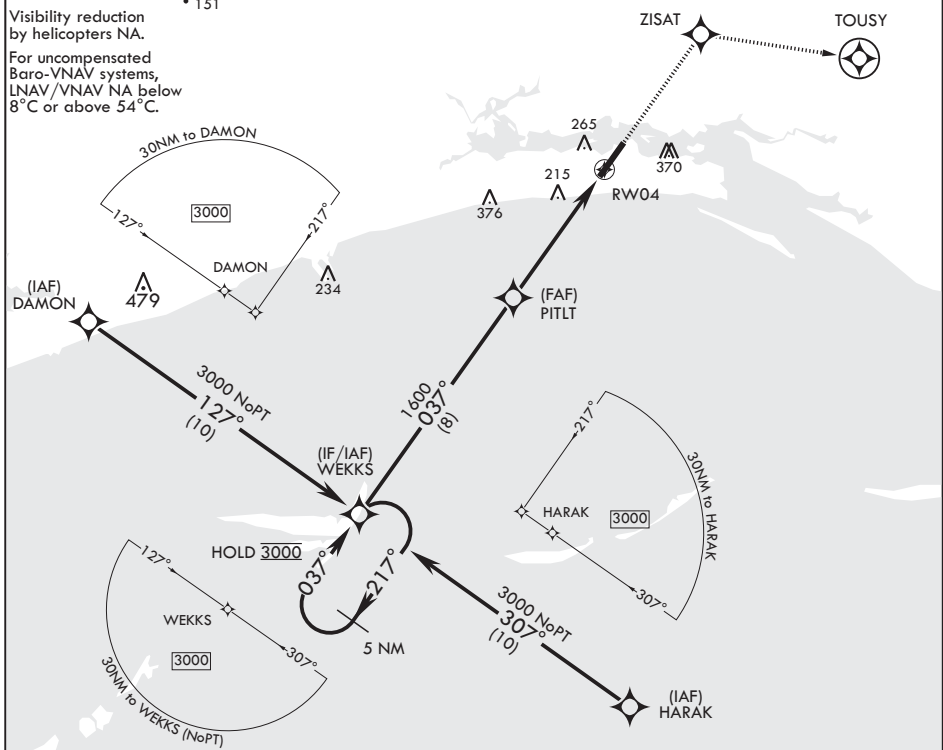
AL-49 (USAF)

KEESLER AFB (KBIX)

RNP APCH ▽	MISSED APPROACH: Climb to 2100 direct ZISAT and track 101° to TOUSY. Expect ATC instructions.
---------------	-----------------------------------------------------------------------------------------------

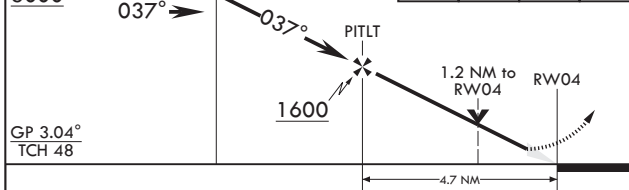
ATIS 281.55	GULFPORT APP CON/DEP CON 124.6 354.1 130° - 309° 127.5 254.25 310° - 129°	TOWER* 120.75 269.075	GND CON 121.8 275.8	CLNC DEL 121.8 275.8
-----------------------	-----------------------------------------------------------------------------------------------	---------------------------------	-------------------------------	--------------------------------

* 151
 Visibility reduction by helicopters NA.
 For uncompensated Baro-VNAV systems, LNAV/VNAV NA below 8°C or above 54°C.

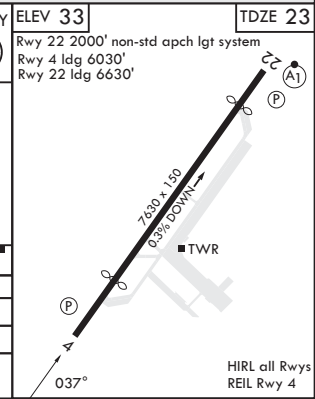


EMERG SAFE ALT 100 NM 3100

5 NM Holding Pattern 3000	WEKKS	2100	ZISAT	tr 101°	TOUSY	ELEV 33	TDZE 23
------------------------------	-------	------	-------	---------	-------	---------	---------



GP 3.04° TCH 48	RWY 22 2000' non-std apch lgt system RWY 4 ldg 6030' RWY 22 ldg 6630'			
CATEGORY	A	B	C	D
LNAV/VNAV DA	391/55		368 (400-1)	
LNAV MDA	460/55	437 (500-1)	460-1¼	437 (500-1¼)
CRCLING	580-1 547 (600-1)	660-1 627 (700-1)	680-1¼ 647 (700-1¼)	680-2 647 (700-2)



BILOXI, MISSISSIPPI

30°25'N - 88°55'W

KEESLER AFB (KBIX)

Amdt 2 07SEP23

RNAV (GPS) RWY 4

SC-4, 03 OCT 2024 to 31 OCT 2024

SC-4, 03 OCT 2024 to 31 OCT 2024