

BILOXI, MISSISSIPPI

# ILS or LOC RWY 22

LOC I-BIX <b>109.7</b>	APCH CRS <b>217°</b>	Rwy ldg THRE Arprt Elev <b>6630</b> <b>17</b> <b>33</b>	AL-49 [USAF]	KEESLER AFB (KBIX)
---------------------------	-------------------------	--	--------------	--------------------

RADAR or DME required.

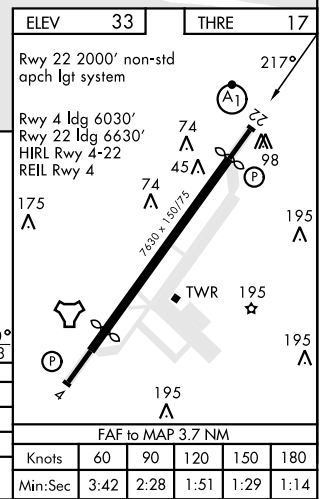
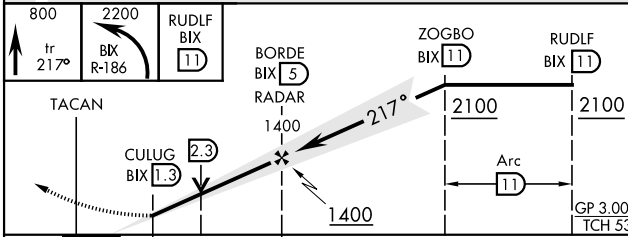
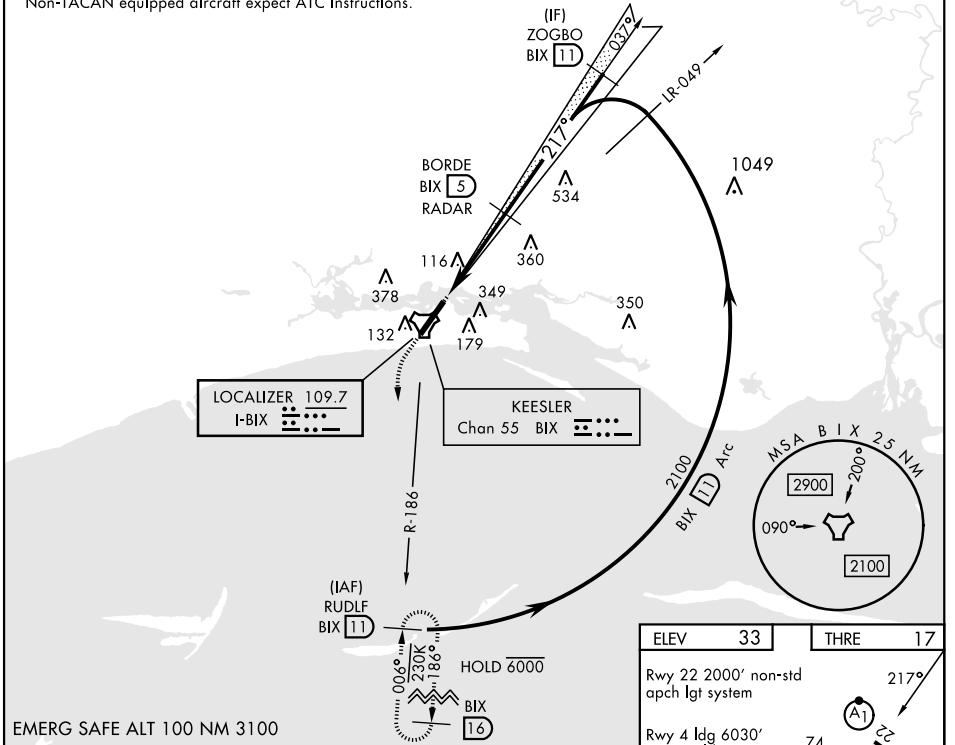
⚠ \*When ALS inop, increase CAT AB RVR to 55, vis to 1 mile, CAT CD vis to 1 1/2 miles.

⚠ MISSED APPROACH: Climb to 800 tracking 217°, upon reaching 800 turn left to intercept BIX TACAN R-186 climbing to 2200 to 11 DME (RUDLF) and hold.

ATIS <b>281.55</b>	GULFPORT APP CON <b>124.6 354.1</b> (130°- 309°) <b>127.5 254.25</b> (310°- 129°)	TOWER ★ <b>120.75 269.075</b>	GND CON <b>121.8 275.8</b>	CLNC DEL <b>121.8 275.8</b>
-----------------------	---	----------------------------------	-------------------------------	--------------------------------

• 272

† Missed approach requires use of RNAV or ATC RADAR monitoring.  
Non-TACAN equipped aircraft expect ATC instructions.



CATEGORY	A	B	C	D
S-ILS 22	217/40	200	(200-3/4)	
S-LOC 22*	540/40 523 (600-3/4)	660-1 (600-3/4)	540-1 1/4 523 (600-1 1/4)	680-2 (600-1 1/4)
CIRCLING	580-1 547 (600-1)	660-1 627 (700-1)	680-1 3/4 647 (700-1 3/4)	680-2 647 (700-2)

FAF to MAP 3.7 NM					
Knots	60	90	120	150	180
Min:Sec	3:42	2:28	1:51	1:29	1:14

BILOXI, MISSISSIPPI

30° 25' N-88° 55' W

KEESLER AFB (KBIX)

Amtd 2 03NOV22

# ILS or LOC RWY 22

SC-4, 03 OCT 2024 to 31 OCT 2024

SC-4, 03 OCT 2024 to 31 OCT 2024