

WAAS CH 56222 W28A	APP CRS 282°	Rwy Idg 10518 TDZE 3517 Apt Elev 3662
---------------------------------	------------------------	------------------------------------------------------------------

RNAV (GPS) Y RWY 28R

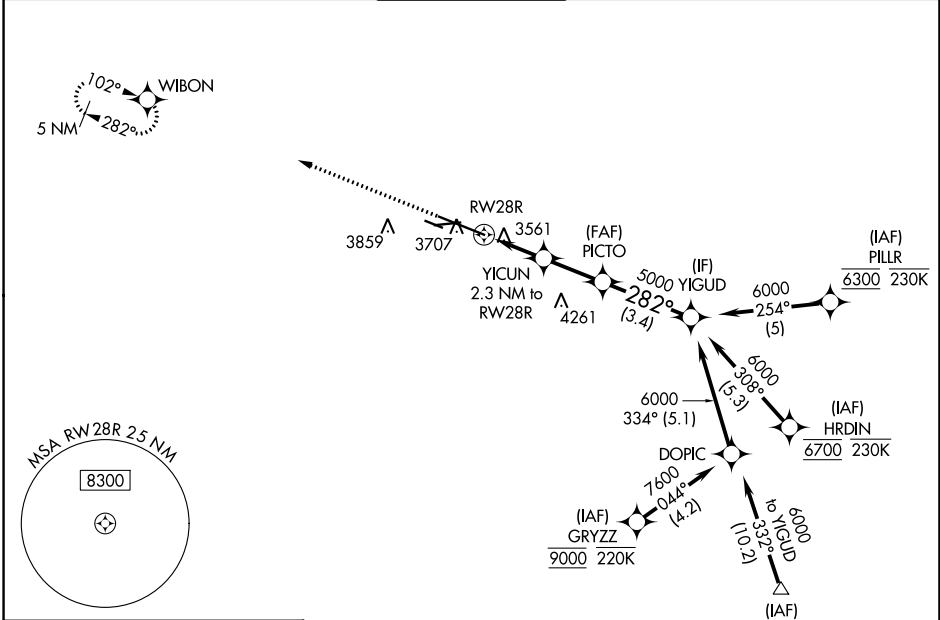
BILLINGS LOGAN INTL (BIL)

RNP APCH - GPS.

▲ For uncompensated Baro-VNAV systems, LNAV/VNAV NA below -24°C or above 50°C.

MISSED APPROACH: Climb to 5900 direct WIBON and hold.

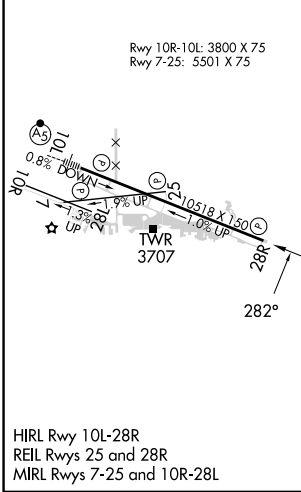
ATIS 126.3	BILLINGS APP CON 120.5 284.6	BILLINGS TOWER 127.2 257.8	GND CON 121.9	CLINC DEL 121.9
----------------------	----------------------------------------	--------------------------------------	-------------------------	---------------------------



NW-1, 31 OCT 2024 to 28 NOV 2024

NW-1, 31 OCT 2024 to 28 NOV 2024

ELEV 3662	D	TDZE 3517
-----------	----------	-----------



▲ 5155				
5900	WIBON	PICTO	YIGUD	
	0.9 NM to RWY 28R	2.3 NM to RWY 28R	3.4 NM	6000
	4260	5000	5000	GP 3.00° TCH 56
CATEGORY	A	B	C	D
LPV DA		3767- ³ / ₄	250 (200- ³ / ₄)	
LNAV/VNAV DA		3786- ⁷ / ₈	269 (200- ⁷ / ₈)	
LNAV MDA		3820-1	303 (200-1)	
C CIRCLING	4160-1	498 (500-1)	4180-1 ¹ / ₂ 518 (600-1 ¹ / ₂)	4580-3 918 (1000-3)