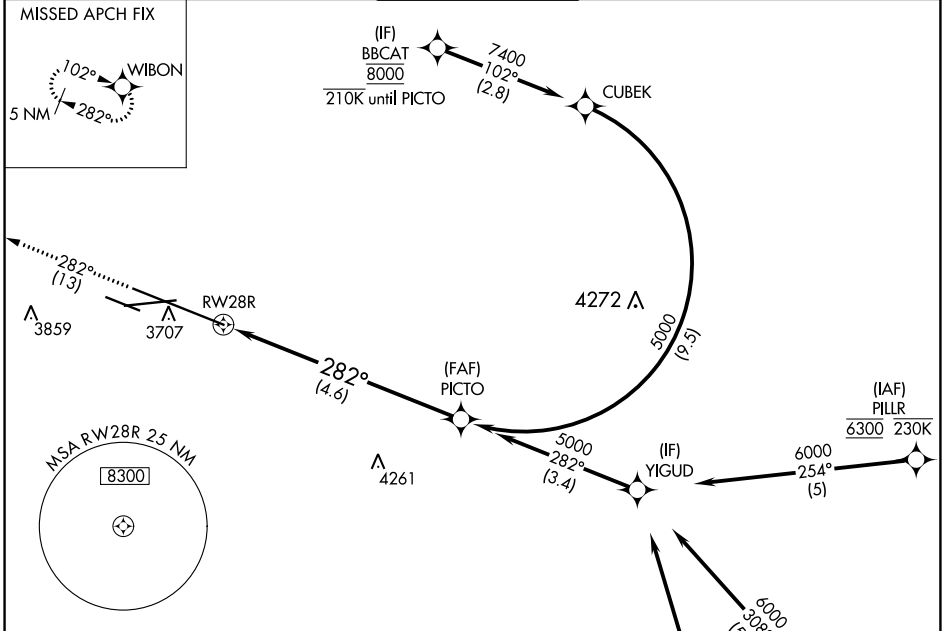


APP CRS 282°	Rwy Idg TDZE Apt Elev	10518 3517 3662
------------------------	-----------------------------	--

RNAV (RNP) Z RWY 28R

BILLINGS LOGAN INTL (BIL)

RNP AR APCH-GPS		MISSED APPROACH: Climb to 5900 on track 282° to WIBON and hold.		
For uncompensated Baro-VNAV systems, procedure NA below -24°C or above 50°C.				
ATIS 126.3	BILLINGS APP CON 120.5 284.6	BILLINGS TOWER 127.2 257.8	GND CON 121.9	CLNC DEL 121.9



NW-1, 31 OCT 2024 to 28 NOV 2024

NW-1, 31 OCT 2024 to 28 NOV 2024

ELEV 3662	D	TDZE 3517
-----------	----------	-----------

Rwy 10R-10L: 3800 X 75
Rwy 7-25: 5501 X 75

REIL Rwy 25 and 28R
HIRL Rwy 10L-28R
MIRL Rwy 7-25 and 10R-28L

See planview for multiple IF locations.

5900	WIBON	5000	PICTO
tr 282°			
RWY 28R			
		5000	
			GP 3.00° TCH 56
4.6 NM			
CATEGORY	A	B	C
RNP 0.30 DA	3903-1¼ 386 (300-1¼)		

AUTHORIZATION REQUIRED