

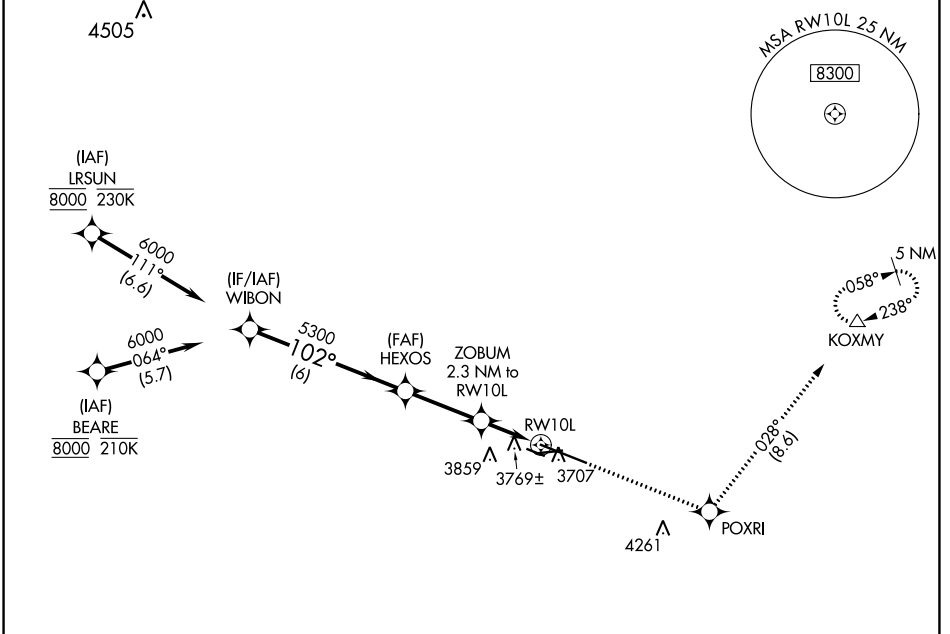
WAAS CH 50122 W10A	APP CRS 102°	Rwy Idg 10518 TDZE 3585 Apt Elev 3662
--	------------------------	--

RNAV (GPS) RWY 10L

BILLINGS LOGAN INTL (BIL)

RNP APCH - GPS		MALSR	MISSED APPROACH: Climb to 6000 direct POXRI and on track 028° to KOXMY and hold.
<p>V For uncompensated Baro-VNAV systems, LNAV/VNAV NA below -24°C or above 50°C. #RVR 1800 authorized with use of FD or AP or HUD to DA.</p>			

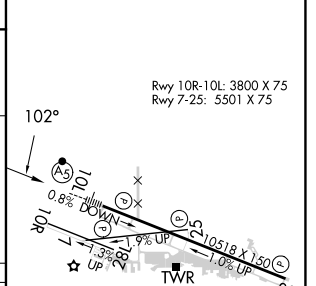
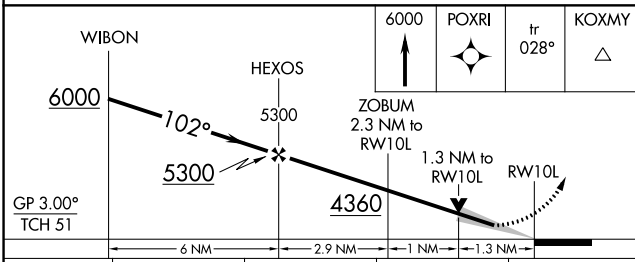
ATIS 126.3	BILLINGS APP CON 120.5 284.6	BILLINGS TOWER 127.2 257.8	GND CON 121.9	CLNC DEL 121.9
----------------------	--	--------------------------------------	-------------------------	--------------------------



NW-1, 31 OCT 2024 to 28 NOV 2024

NW-1, 31 OCT 2024 to 28 NOV 2024

ELEV 3662	D TDZE 3585
-----------	--------------------



GP 3.00° TCH 51	WIBON	HEXOS	ZOBUM 2.3 NM to RW10L	POXRI	tr 028°	KOXMY
	6000	5300	4360			
	6 NM	2.9 NM	1 NM	1.3 NM		
CATEGORY	A	B	C	D		
LPV DA#	3785/24		200 (200-½)			
LNAV/VNAV DA	4041/45		456 (400-¾)			
LNAV MDA	4020/24 435 (400-½)		4020/40 435 (400-¾)			
C CIRCLING	4160-1 498 (500-1)		4180-1½ 518 (600-1½)		4580-3 918 (1000-3)	

Rwy 10R-10L: 3800 X 75
Rwy 7-25: 5501 X 75

TWR 3707

REIL Rwy 25 and 28R
HIRL Rwy 10L-28R
MIRL Rwy 7-25 and 10R-28L