

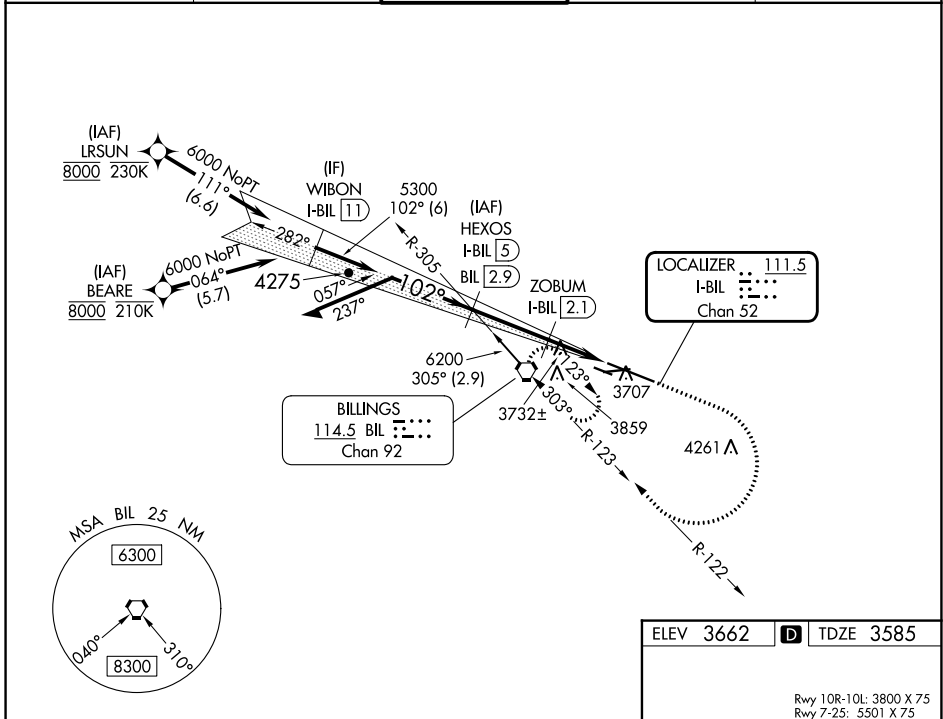
LOC/DME I-BIL <b>111.5</b> Chan <b>52</b>	APP CRS <b>102°</b>	Rwy Idg TDZE <b>3585</b> Apt Elev <b>3662</b>
-------------------------------------------------	------------------------	-----------------------------------------------------

# ILS Y or LOC Y RWY 10L

BILLINGS LOGAN INTL (BIL)

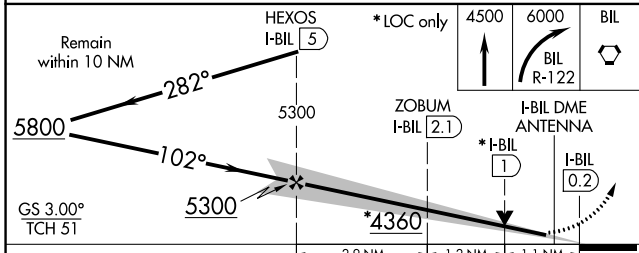
DME required. RNP APCH-GPS. From BEARE or LRSUN.	MALSR 	MISSED APPROACH: Climb to 4500 then climbing right turn to 6000 on BIL VORTAC R-122 to BIL VORTAC and hold.
For inop ALS, increase S-LOC 10L Cat C/D visibility to RVR 6000. # RVR 1800 authorized with use of FD or AP or HUD to DA.		

ATIS <b>126.3</b>	BILLINGS APP CON <b>120.5 284.6</b>	BILLINGS TOWER <b>127.2 257.8</b>	GND CON <b>121.9</b>	CLNC DEL <b>121.9</b>
----------------------	----------------------------------------	--------------------------------------	-------------------------	--------------------------



NW-1, 31 OCT 2024 to 28 NOV 2024

NW-1, 31 OCT 2024 to 28 NOV 2024



ELEV 3662	TDZE 3585
Rwy 10R-10L: 3800 X 75 Rwy 7-25: 5501 X 75	
REIL Rwys 25 and 28R HIRL Rwy 10L-28R MIRL Rwys 7-25 and 10R-28L	
FAF to MAP 5.2 NM	
Knots	60 90 120 150 180
Min:Sec	5:12 3:28 2:36 2:05 1:44