

(KLSHN1.KLSHN) 23166

KLSHN ONE DEPARTURE (RNAV)

AL-45 (FAA)

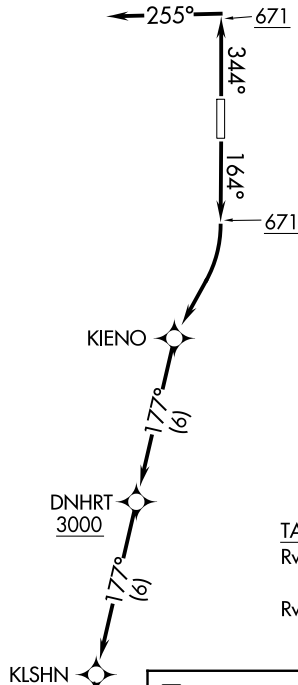
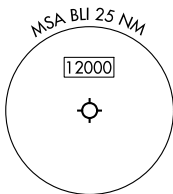
BELLINGHAM INTL (BLI)
BELLINGHAM, WASHINGTON

**TOP ALTITUDE:
ASSIGNED BY ATC**

RNAV 1 - DME/DME/IRU or GPS

RADAR required

VICTORIA TERMINAL DEP CON
132.7 290.8
ATIS
134.45
GND CON
127.4 379.3
BELLINGHAM TOWER ★
124.9 379.3



TAKEOFF MINIMUMS

Rwy 16: Standard with minimum climb of 245' per NM to 2300.
Rwy 34: Standard.

NOTE: Chart not to scale.

DEPARTURE ROUTE DESCRIPTION

TAKEOFF RUNWAY 16: Climb on heading 164° to 671, then right turn direct KIENO, then on track 177° to cross DNHRT at or above 3000, thence. . . .

TAKEOFF RUNWAY 34: Climb on heading 344° to 671, then on heading 255° or as assigned by ATC, for vectors to cross DNHRT at or above 3000, thence. . . .

. . . .on track 177° to KLSHN, then on (transition). Maintain ATC assigned altitude. Expect filed altitude within 5 minutes after departure.

LOST COMMUNICATIONS: If no transmissions are received for 2 minutes after departure, proceed direct DNHRT, then on last routing cleared.

PENN COVE TRANSITION (KLSHN1.CVV)

PENN COVE
CVV

BUHNR

KLSHN ONE DEPARTURE (RNAV)

(KLSHN1.KLSHN) 15JUN23

BELLINGHAM, WASHINGTON
BELLINGHAM INTL (BLI)

NW-1, 31 OCT 2024 to 28 NOV 2024

NW-1, 31 OCT 2024 to 28 NOV 2024