

BANGOR, MAINE

AL-39 (FAA)

23334

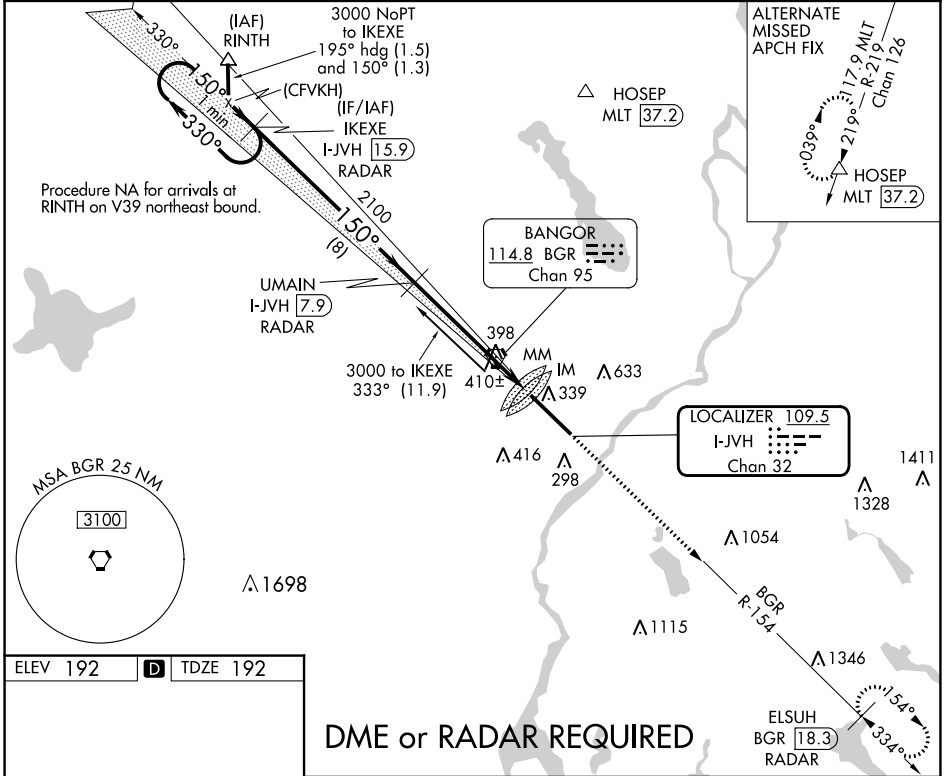
LOC/DME I-JVH 109.5 Chan 32	APP CRS 150°	Rwy Idg 11440 TDZE 192 Apt Elev 192
---	------------------------	--

ILS Y RWY 15 (CAT II & III)

BANGOR INTL (BGR)

 ASR	DME or RADAR required.	ALSF-2 	MISSED APPROACH: Climb to 3000 on heading 150° and BGR VORTAC R-154 to ELSUH/BGR 18.3 DME/RADAR and hold.	

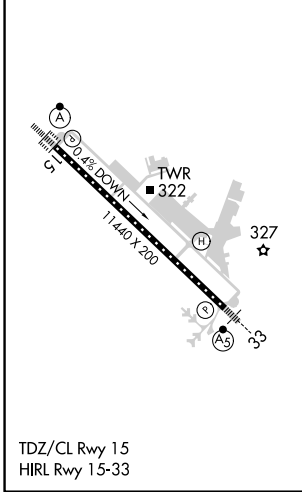
ATIS 127.75	BANGOR APP CON 118.925 239.3	BANGOR TOWER 120.7 233.7	GND CON 121.9 348.6	CLNC DEL 135.9 348.6
-----------------------	--	------------------------------------	-------------------------------	--------------------------------



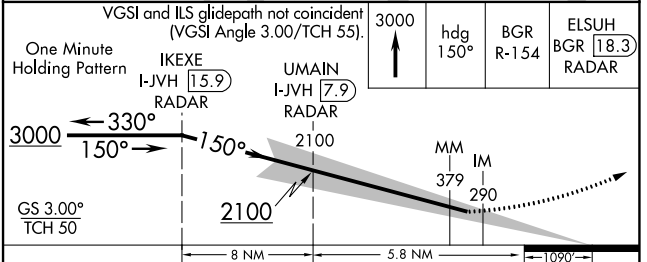
NE-1, 11 JUL 2024 to 08 AUG 2024

NE-1, 11 JUL 2024 to 08 AUG 2024

ELEV 192	D	TDZE 192
----------	----------	----------



DME or RADAR REQUIRED



CATEGORY	A	B	C	D
S-ILS 15	CAT II RA 113/12 100 DA 292			
S-ILS 15	CAT III RVR 06			

CATEGORY II & III ILS - SPECIAL AIRCREW & AIRCRAFT CERTIFICATION REQUIRED

BANGOR, MAINE
Amdt 7 27APR17

44°48'N-68°50'W

BANGOR INTL (BGR)
ILS Y RWY 15 (CAT II & III)