


TACAN RWY 3

TACAN COF Chan 97	APCH CRS 020°	Rwy Idg TDZE Arprt Elev	9008 5 8
-----------------------------	-------------------------	-------------------------------	-------------------------------------

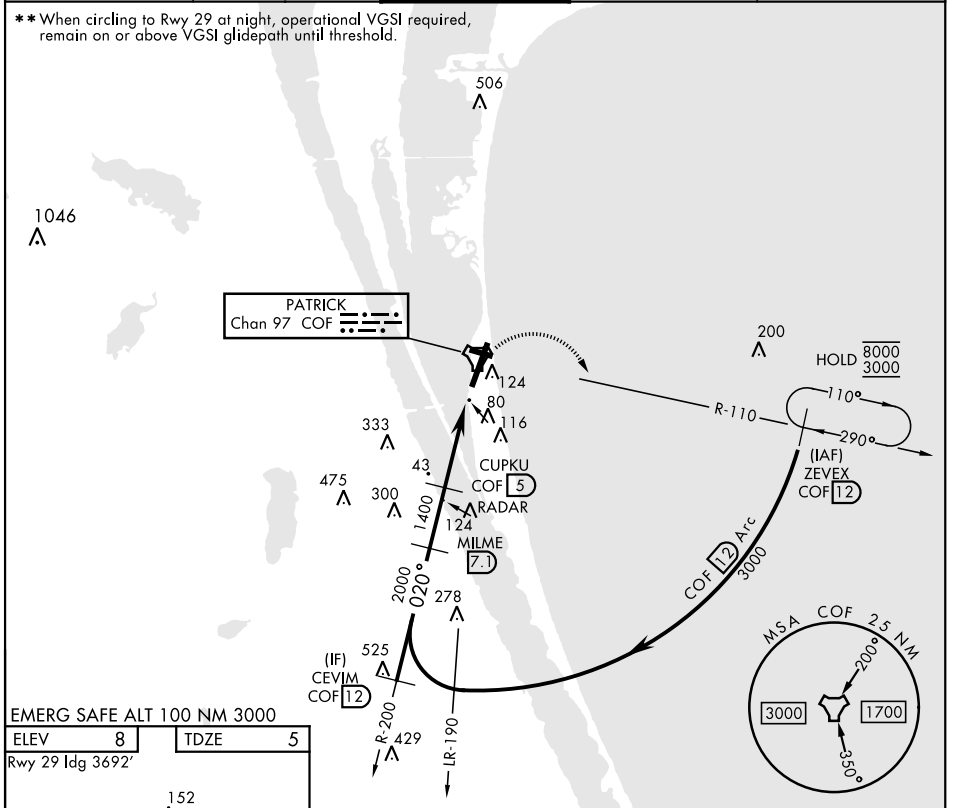
[USAF]

PATRICK SFB (KCOF)

▼ * When ALS inop, increase CAT AB RVR to 55 and vis to 1 mile, CAT CDE vis to 1 3/8 miles.
 ** Circling not authorized NW of Rwy 3-21.

ALSF-1 
 MISSED APPROACH: Climb to 600, then climbing right turn to 3000 and intercept COF TACAN R-110 to ZEVEX/12 DME and hold, continue climb in hold to 3000.

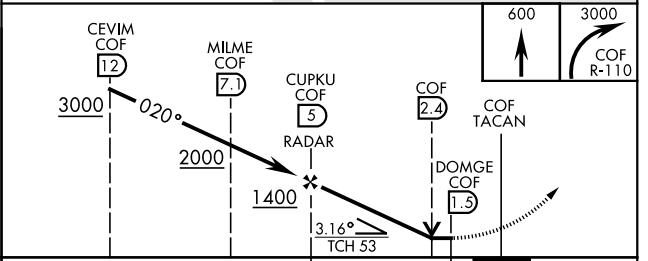
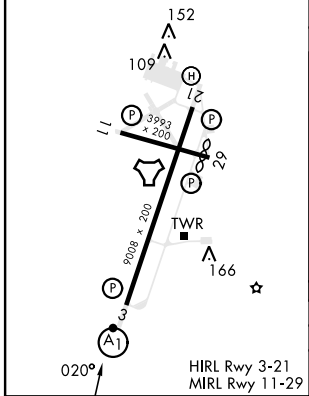
ATIS ★ 119.175 273.5	ORLANDO APP CON ★ 132.65 281.425	TOWER ★ 133.75 269.375	GND CON ★ 124.35 335.8	CLNC DEL ★ 118.4 289.4
--------------------------------	--	----------------------------------	----------------------------------	----------------------------------




EMERG SAFE ALT 100 NM 3000

ELEV 8	TDZE 5
---------------	---------------

Rwy 29 Idg 3692'



CATEGORY	A	B	C	D	E
S-03 *	520/24	515 (600-1/2)	520/55	515 (600-1)	
 CIRCLING	520-1	512 (600-1)	540-1 1/2 532 (600-1 1/2)	560-2 552 (600-2)	580-2 572 (600-2)

TACAN RWY 3

SE-3, 03 OCT 2024 to 31 OCT 2024

SE-3, 03 OCT 2024 to 31 OCT 2024