

# TACAN RWY 21

TACAN COF Chan <b>97</b>	APCH CRS <b>217°</b>	Rwy Idg TDZE Arprt Elev <b>9008</b> <b>7</b> <b>8</b>
-----------------------------	-------------------------	--

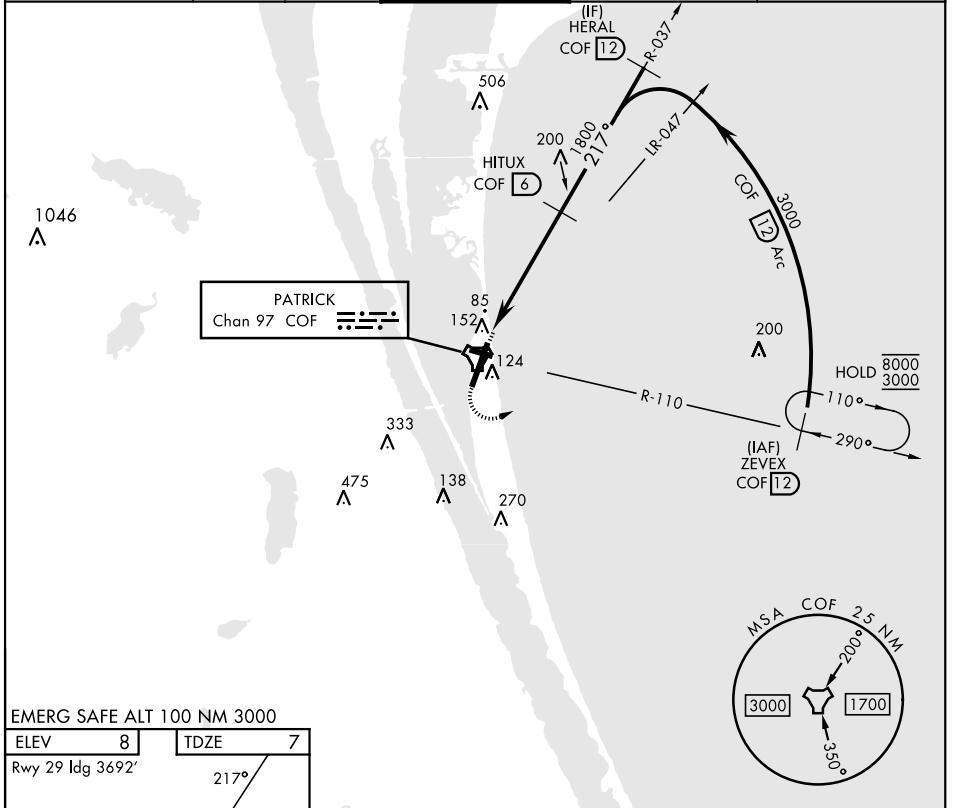
[USAF]

PATRICK SFB (KCOF)

**▼** \* When Circling to Rwy 29 at night, operational VGSI required, remain on or above VGSI glidepath until threshold. Circling not authorized NW of Rwy 3-21.

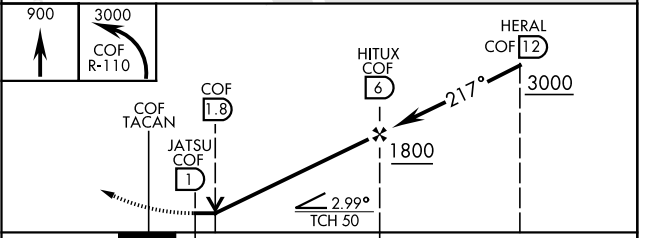
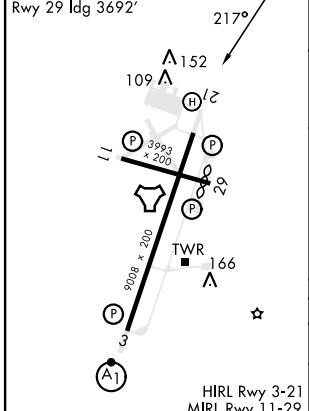
MISSED APPROACH: Climb to 900, then climbing left turn to 3000 to intercept the COF TACAN R-110 to ZEVEX and hold.

ATIS ★ <b>119.175 273.5</b>	ORLANDO APP CON★ <b>132.65 281.425</b>	TOWER★ <b>133.75 269.375</b>	GND CON★ <b>124.35 335.8</b>	CLNC DEL★ <b>118.4 289.4</b>
--------------------------------	---	---------------------------------	---------------------------------	---------------------------------



EMERG SAFE ALT 100 NM 3000

ELEV <b>8</b>	TDZE <b>7</b>
---------------	---------------



CATEGORY	A	B	C	D	E
S-21	460/55	452 (500-1)	460-1 $\frac{3}{8}$	452 (500-1 $\frac{3}{8}$ )	
<b>CIRCLING</b> *	520-1	512 (600-1)	540-1 $\frac{1}{2}$ 532 (600-1 $\frac{1}{2}$ )	560-2 552 (600-2)	580-2 572 (600-2)

# TACAN RWY 21

SE-3, 03 OCT 2024 to 31 OCT 2024

SE-3, 03 OCT 2024 to 31 OCT 2024