

COCOA BEACH, FLORIDA

RNAV (GPS) RWY 3

APCH CRS	Rwy Idg	9008
027°	TDZE	5
	Arprt Elev	8

-(USAF)

PATRICK SFB (KCOF)

RNP APCH-GPS

ALSIF-1

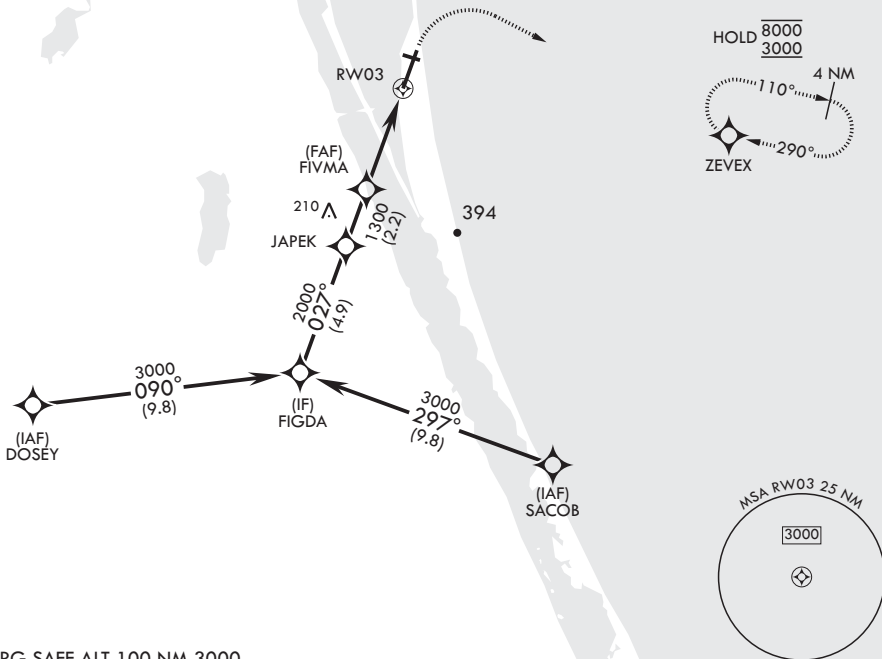
MISSED APPROACH: Climb to 600 then climbing right turn to 3000 direct ZEVEX and hold.

▼ * When ALS inop, increase CAT AB RVR to 55, vis to 1 mile; CAT CD vis to 1 3/8 miles.
 ** Circling not authorized NW of RWY 3-21.



ATIS*	ORLANDO APP CON/DEP CON*	TOWER*	GND CON*	CLNC DEL*
119.175 273.5	132.65 281.425	133.75 269.375	124.35 335.8	118.4 289.4

When circling to Rwy 29 at night, operational VGSI required, remain on or above VGSI glidepath until threshold.



SE-3, 31 OCT 2024 to 28 NOV 2024

SE-3, 31 OCT 2024 to 28 NOV 2024

EMERG SAFE ALT 100 NM 3000

FIGDA	600	3000	ZEVEX	ELEV 8	TDZE 5
3000	↑	↷	⊙	Rwy 29 Idg 3692'	
027°					
JAPEK					
2000					
FIVMA					
1300					
3.00°					
TCH 53					
1.3 NM to RWY 3					
3.9 NM					
RWY 3					
CATEGORY	A	B	C	D	
LNAV MDA*	480/24	475 (500-1/2)	480/50	475 (500-1)	
CIRCLING**	520-1	512 (600-1)	540-1 1/2	560-2	
			532 (600-1 1/2)	552 (600-2)	

COCOA BEACH, FLORIDA

28°14'N - 80°37'W

PATRICK SFB (KCOF)

Orig 11JUL24

RNAV (GPS) RWY 3

HIRL Rwy 3-21
MIRL Rwy 11-29