

COCOA BEACH, FLORIDA

RNAV (GPS) RWY 21

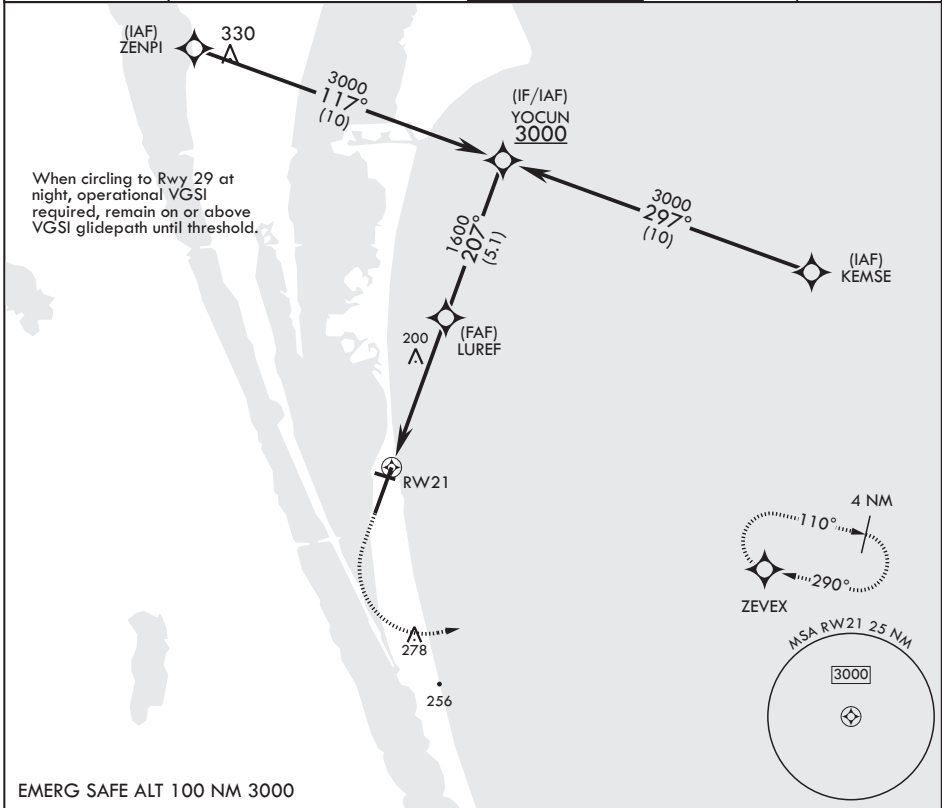
APCH CRS	Rwy Idg	9008
207°	TDZE	7
	Arprt Elev	8

(USAF)

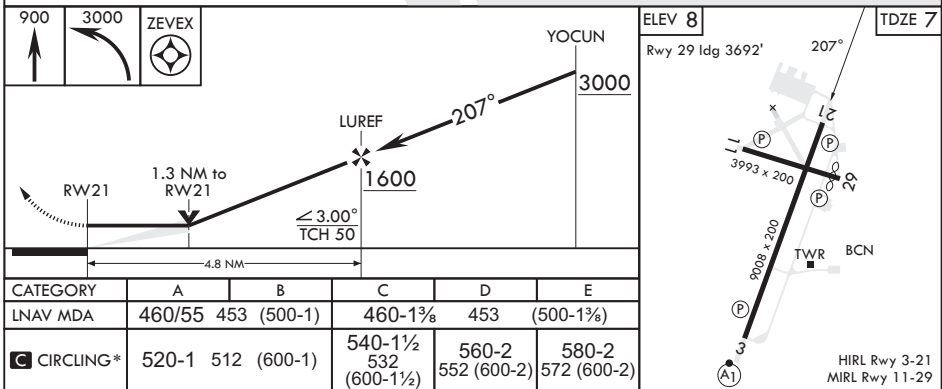
PATRICK SFB (KCOF)

RNP APCH-GPS	MISSED APPROACH: Climb to 900 then climbing left turn to 3000 direct ZEVEX and hold.
* Circling NA NW of RWY 3-21.	

ATIS*	ORLANDO APP CON/DEP CON*	TOWER*	GND CON*	CLNC DEL*
119.175 273.5	132.65 281.425	133.75 269.375	124.35 335.8	118.4 289.4



EMERG SAFE ALT 100 NM 3000



COCOA BEACH, FLORIDA

28°14'N - 80°37'W

PATRICK SFB (KCOF)

Amdt 1 02NOV23

RNAV (GPS) RWY 21

SE-3, 31 OCT 2024 to 28 NOV 2024

SE-3, 31 OCT 2024 to 28 NOV 2024