

# OCEAN FOUR DEPARTURE

[USAF]

COCOA BEACH, FLORIDA

ATIS ★  
 119.175 273.5  
 CLNC DEL ★  
 118.4 289.4  
 GND CON ★  
 124.35 335.8  
 TOWER ★  
 133.75 269.375  
 ORLANDO DEP CON ★  
 132.65 281.425

DME required

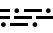
Rwy	Knots	60	120	180	240	300	360
03/21	V/V(fpm)	210	420	630	840	1050	1260

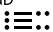
Minimum Climb Rate to 500

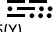
**TOP ALTITUDE**  
**2000**

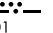
ORMOND BEACH  
 112.6 OMN   
 Chan 73

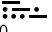
ORLANDO  
 112.2 ORL   
 Chan 59

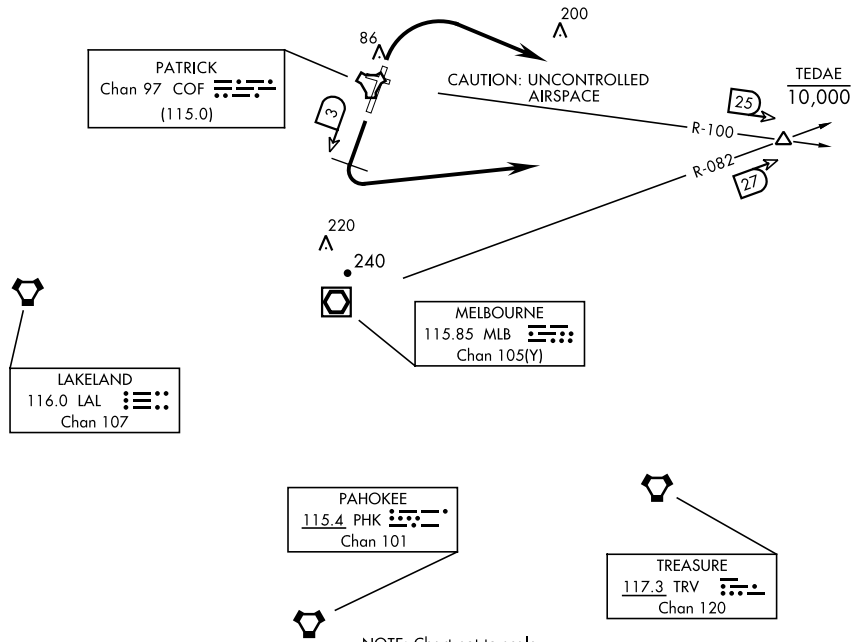
PATRICK  
 Chan 97 COF   
 (115.0)

LAKELAND  
 116.0 LAL   
 Chan 107

MELBOURNE  
 115.85 MLB   
 Chan 105(Y)

PAHOKEE  
 115.4 PHK   
 Chan 101

TREASURE  
 117.3 TRV   
 Chan 120



NOTE: Chart not to scale.

## DEPARTURE ROUTE DESCRIPTION

Expect clearance to filed altitude/flight level 10 minutes after departure.

**TAKEOFF RWY 03:** Track runway heading, climb and maintain 2000. After departure end of runway, turn right direct TEDAE (COF R-100/25 DME). After receiving climb clearance from ATC, cross TEDAE at or below 10,000.

**TAKEOFF RWY 21:** Track runway heading, climb and maintain 2000. At COF TACAN 3 DME, turn left direct TEDAE (COF R-100/25 DME). After receiving climb clearance from ATC, cross TEDAE at or below 10,000. Note: All aircraft shall not commence turn prior to 3 DME due to noise abatement. Aircraft should avoid Melbourne International Class D Airspace.