

LOC I-LJU 108.5	APP CRS 245°	Rwy Idg 11800
		TDZE 624
		Apt Elev 633

ILS or LOC RWY 25

OSCODA-WURTSMITH (OSC)

DME required.

NA Circling NA southeast of Rwy 7-25. For inop ALS, increase S-LOC Cats C and D visibility to 1 SM. DME from ASP DME. Simultaneous reception of I-LJU and ASP DME required.

MALSR

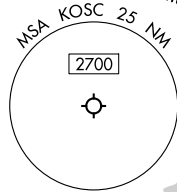
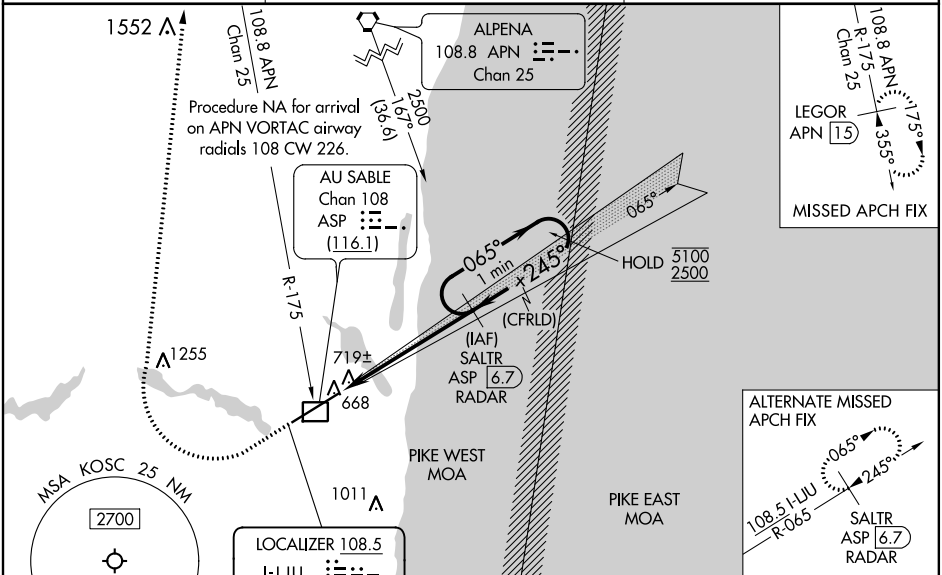


MISSED APPROACH: Climb to 1300 then climbing right turn to 3000 on heading 030° and on APN VORTAC R-175 to LEGOR/APN 15 DME and hold.

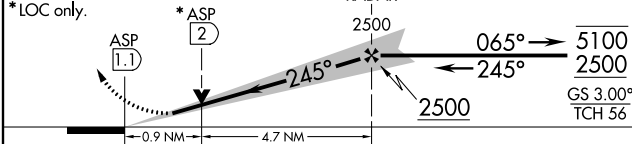
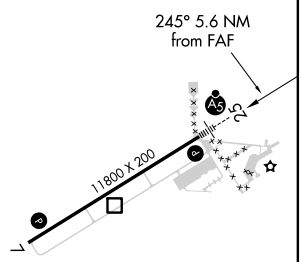
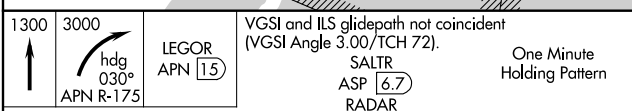
AWOS-3
118.7

MINNEAPOLIS CENTER
125.475 269.45

UNICOM
123.0 (CTAF)



ELEV 633	TDZE 624
----------	----------



CATEGORY	A	B	C	D
S-ILS 25	824-1/2 200 (200-1/2)			
S-LOC 25	980-1/2 356 (400-1/2)	980-5/8 356 (400-5/8)		
C CIRCLING	1140-1 507 (600-1)	1160-1 1/2 527 (600-1 1/2)	1300-2 667 (700-2)	

HIRL Rwy 7-25

EC-1, 02 DEC 2021 to 30 DEC 2021

EC-1, 02 DEC 2021 to 30 DEC 2021