

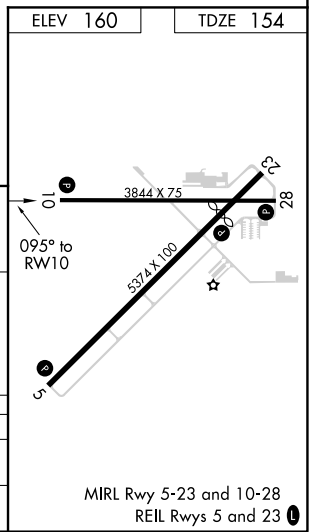
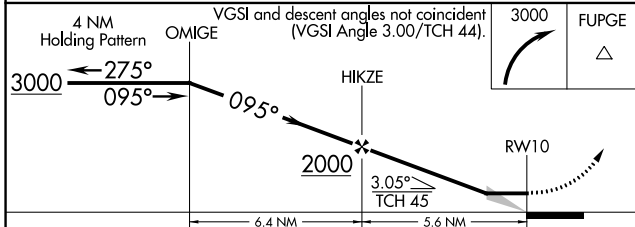
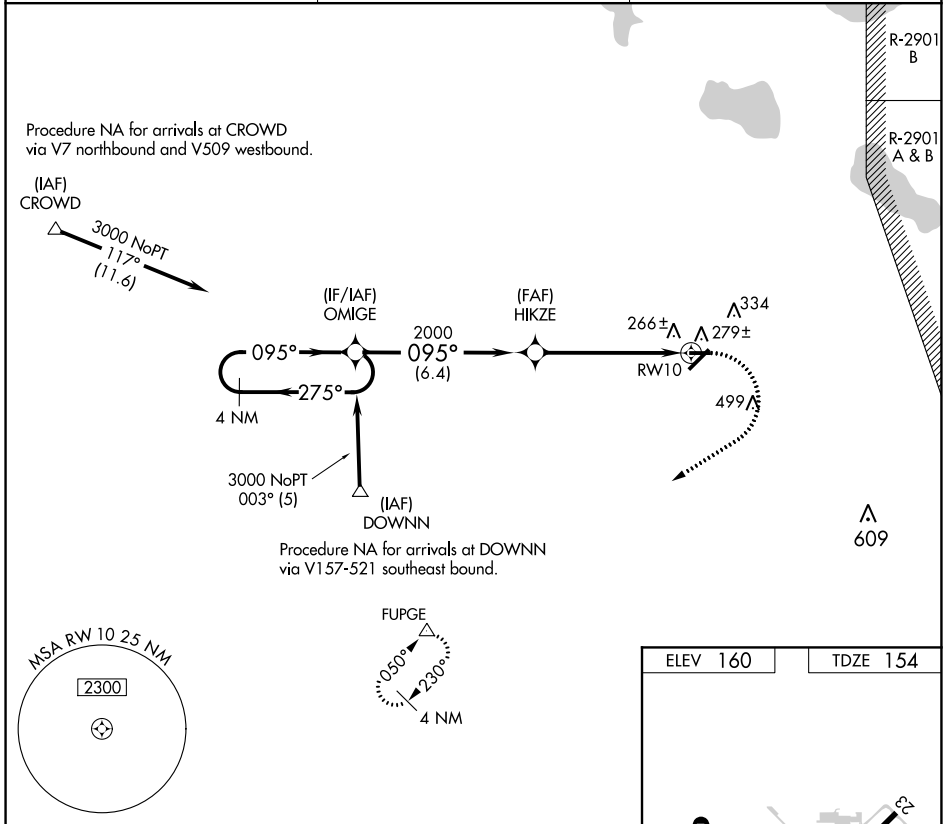
APP CRS Rwy Idg **3844**
095° TDZE **154**
 Apt Elev **160**

RNAV (GPS) RWY 10
 AVON PARK EXEC (AVO)

⚠ DME/DME RNP-0.3 NA. Rwy 5,10,23,28 helicopter visibility reduction below
NA 1 SM NA. When local altimeter setting not received, use Orlando Intl
 altimeter setting; increase all MDA 140 feet. Procedure NA at night.

MISSED APPROACH: Climbing right turn
 3000 direct FUPGE and hold.

AWOS-3 118.725 **MIAMI CENTER ★ 134.55 257.7** **UNICOM 122.8 (CTAF) 0**



CATEGORY	A	B	C	D
LNAV MDA	640-1	486 (500-1)		NA
C CIRCLING	680-1 520 (600-1)	840-1 680 (700-1)		NA

SE-3, 03 OCT 2024 to 31 OCT 2024

SE-3, 03 OCT 2024 to 31 OCT 2024