

WAAS CH <b>82427</b> <b>W08A</b>	APP CRS <b>080°</b>	Rwy Idg TDZE Apt Elev	<b>2703</b> <b>352</b> <b>352</b>
--	------------------------	-----------------------------	---

# RNAV (GPS) RWY 8

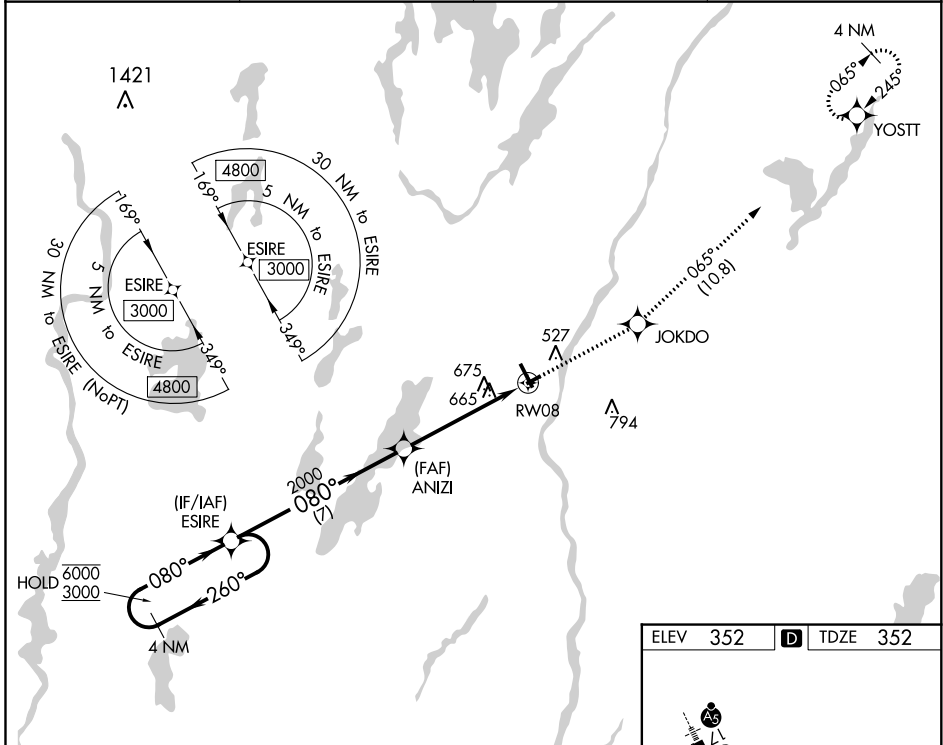
AUGUSTA STATE (AUG)

RNP APCH.

⚠ When local altimeter setting not received, use Waterville altimeter setting and increase all MDA 40 feet; increase LP Cats C/D visibility 1/8 SM, and increase Circling Cat D visibility 1/4 SM. Rwy 8 helicopter visibility reduction below 3/4 SM NA. Circling Rwy 26 NA at night.

MISSED APPROACH: Climb to 3000 direct JOKDO and on track 065° to YOSTT and hold.

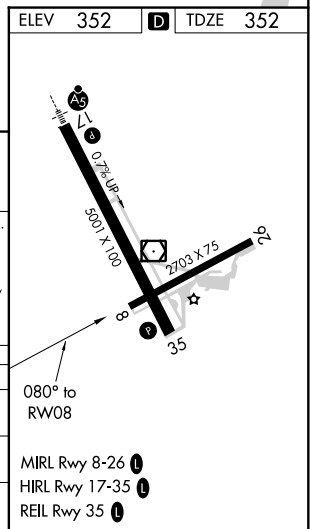
ASOS <b>118.325</b>	PORTLAND APP CON ★ <b>128.35 299.2</b>	CLNC DEL <b>119.95 299.2</b>	UNICOM <b>123.0 (CTAF) 0</b>
------------------------	---	---------------------------------	---------------------------------



NE-1, 14 JUL 2022 to 11 AUG 2022

NE-1, 14 JUL 2022 to 11 AUG 2022

4 NM Holding Pattern		ESIRE		3000	JOKDO	tr 065°	YOSTT
6000 ← 260°		3000 → 080°		080°		Visual Segment - Obstacles.	
4 NM		7 NM		5 NM		RW08	
CATEGORY	A	B	C	D			
LP MDA	920-1	568 (600-1)	920-1 1/8	568 (600-1 1/8)			
LNAV MDA	940-1	588 (600-1)	940-1 3/4	588 (600-1 3/4)			
CIRCLING	940-1 588 (600-1)	980-1 628 (700-1)	980-1 3/4 628 (700-1 3/4)	1160-2 1/2 808 (900-2 1/2)			



- MIRL Rwy 8-26 0
- HIRL Rwy 17-35 0
- REIL Rwy 35 0