

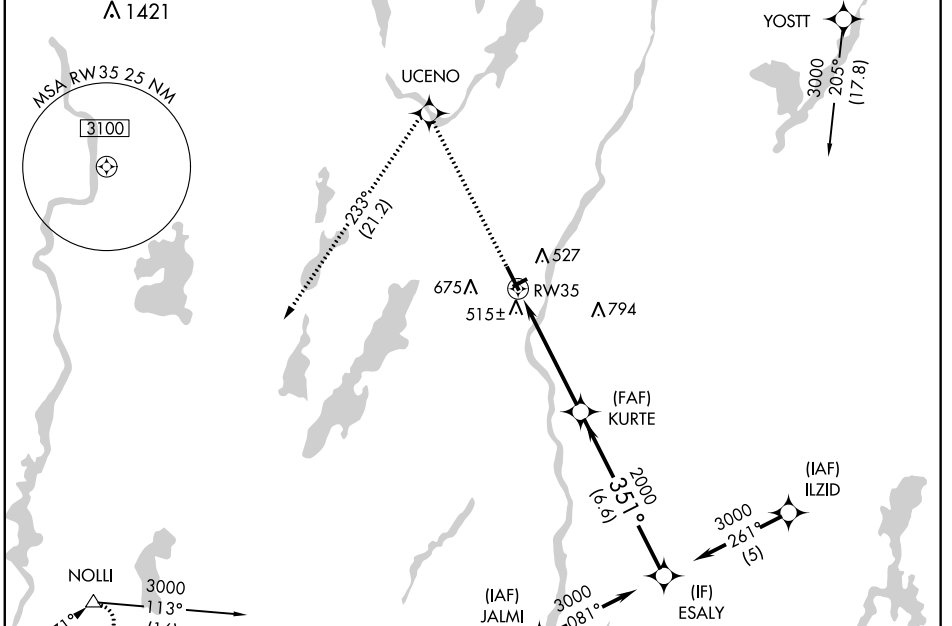
WAAS CH <b>70406</b> <b>W35A</b>	APP CRS <b>351°</b>	Rwy Idg TDZE Apt Elev	<b>5001</b> <b>350</b> <b>352</b>
--	------------------------	-----------------------------	---

# RNAV (GPS) RWY 35

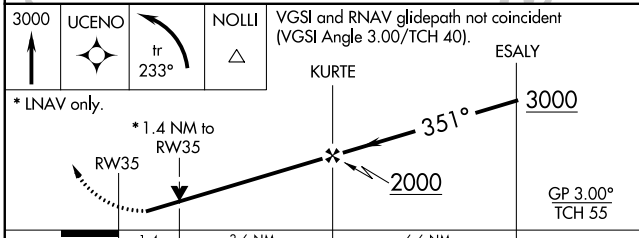
AUGUSTA STATE (AUG)

RNP APCH.	<p><b>⚠</b> Circling to Rwy 26 NA at night. Rwy 35 helicopter visibility reduction below <math>\frac{3}{4}</math> SM NA.  <b>⚠</b> For uncompensated Baro-VNAV systems, LNAV/VNAV NA below -15°C or above 54°C.</p>		<p>MISSED APPROACH: Climb to 3000 direct UCENO and left turn on track 233° to NOLLI and hold.</p>
-----------	---	--	---

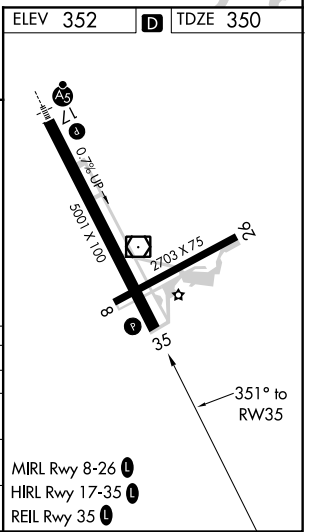
ASOS <b>118.325</b>	PORTLAND APP CON ★ <b>128.35 299.2</b>	CLNC DEL <b>119.95 299.2</b>	UNICOM <b>123.0 (CTAF)</b> <b>⓪</b>
------------------------	---	---------------------------------	--



ELEV 352	<b>D</b> TDZE 350
----------	-------------------



CATEGORY	A	B	C	D
LPV DA	610-1 260 (300-1)			
LNAV/VNAV DA	850-1 $\frac{3}{4}$ 500 (500-1 $\frac{3}{4}$ )			
LNAV MDA	840-1 490 (500-1)	840-1 $\frac{3}{8}$ 490 (500-1 $\frac{3}{8}$ )		840-1 $\frac{1}{2}$ 490 (500-1 $\frac{1}{2}$ )
CIRCLING	880-1 $\frac{3}{4}$ 528 (600-1 $\frac{3}{4}$ )	980-1 $\frac{3}{4}$ 628 (700-1 $\frac{3}{4}$ )	1100-2 $\frac{1}{2}$ 748 (800-2 $\frac{1}{2}$ )	



NE-1, 14 JUL 2022 to 11 AUG 2022

NE-1, 14 JUL 2022 to 11 AUG 2022