

LOC I-AUG 108.7	APP CRS 171°	Rwy Idg 5001
		TDZE 348
		Apt Elev 352

ILS or LOC RWY 17

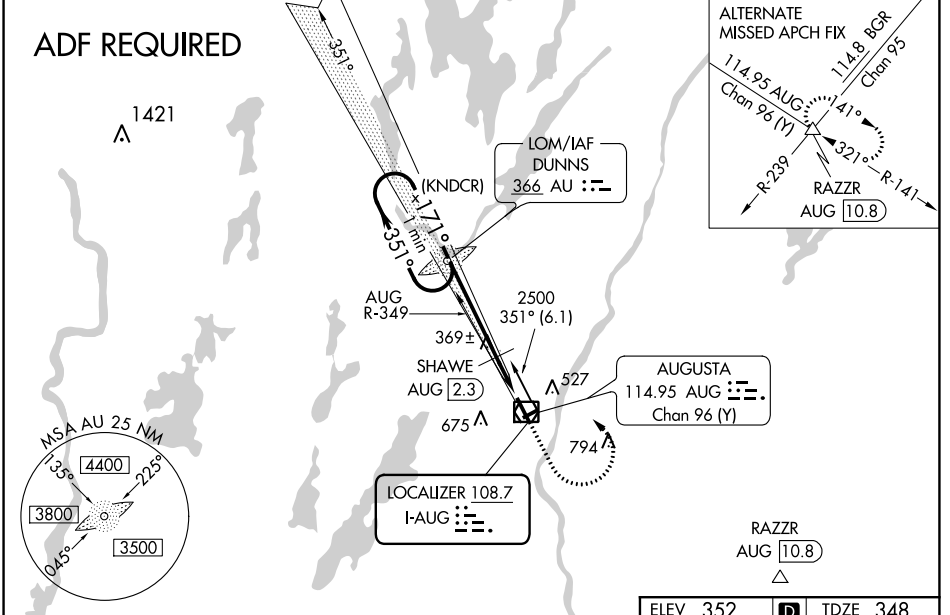
AUGUSTA STATE (AUG)

ADF REQUIRED
 ADF required. Localizer unusable from 0.5 NM to threshold above 1500 feet. When local altimeter setting not received, use Waterville altimeter setting; increase S-ILS 17 DA to 583; increase all MDAs 40 feet and visibility S-LOC 17 Cat C and D 1/8 SM, and Circling Cat D 1/4 SM; SHAWE fix minimums increase S-LOC 17 Cat C and D visibility 1/8 SM, and Circling Cat D visibility 1/4 SM. Glideslope unusable below 430 feet. When Circling to Rwy 8, 26 at night operational VGSI required remain on or above VGSI glidepath until threshold. % DME from AUG VOR/DME.

MALSR

MISSED APPROACH:
 Climb to 1000 then climbing left turn to 2500 direct DUNNS LOM and hold.

ASOS 118.325	PORTLAND APP CON ★ 128.35 299.2	CLNC DEL 119.95 299.2	UNICOM 123.0 (CTAF)
------------------------	---	---------------------------------	-------------------------------



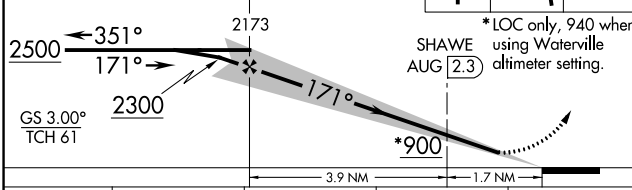
One Minute Holding Pattern

VGSI and ILS glidepath not coincident (VGSI Angle 3.00/TCH 53).
 AU LOM

1000 2500 AU

SHAWE AUG 2.3

*LOC only, 940 when using Waterville altimeter setting.



ELEV 352	D	TDZE 348
----------	---	----------

171° 5.6 NM from FAF

2500

2173

171

150

100

75

50

25

0.7% UP

3500 x 75

35

8

26

HIRL Rwy 17-35 \bullet

MIRL Rwy 8-26 \bullet

REIL Rwy 35 \bullet

FAF to MAP 5.6 NM

Knots	60	90	120	150	180
Min:Sec	5:36	3:44	2:48	2:14	1:52

CATEGORY	A	B	C	D
S-ILS 17		548-1/2	200 (200-1/2)	
S-LOC 17	900-1/2	552 (600-1/2)	900-1 1/4	552 (600-1 1/4)
C CIRCLING	940-1 588 (600-1)	980-1 628 (700-1)	980-1 3/4 628 (700-1 3/4)	1160-2 1/2 808 (900-2 1/2)
SHAWE FIX MINIMUMS %				
S-LOC 17		620-1/2	272 (300-1/2)	
C CIRCLING	940-1 588 (600-1)	980-1 628 (700-1)	980-1 3/4 628 (700-1 3/4)	1160-2 1/2 808 (900-2 1/2)