

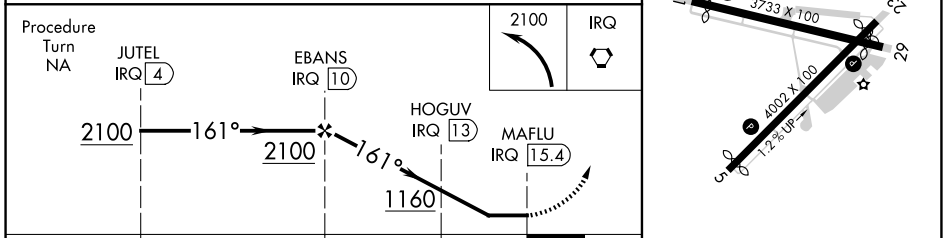
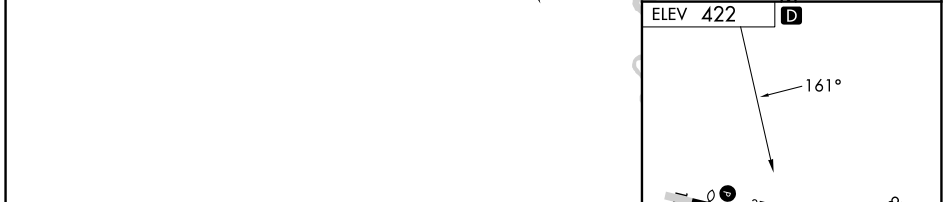
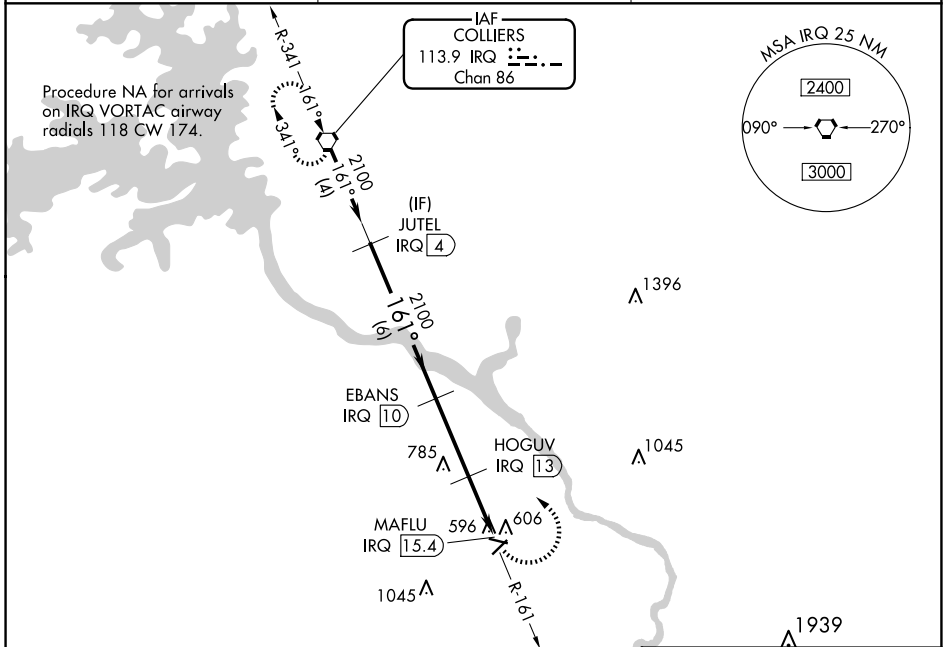
VORTAC IRQ <b>113.9</b> Chan <b>86</b>	APP CRS <b>161°</b>	Rwy Idg TDZE Apt Elev	<b>N/A</b> <b>N/A</b> <b>422</b>
--	------------------------	-----------------------------	--

**VOR/DME-B**  
DANIEL FLD (DNL)

**⚠** When local altimeter setting not received, use Augusta Rgnl at Bush Fld altimeter setting and increase all MDA 60 feet.  
**⚠** Procedure NA at night. Helicopter visibility reduction below 1 SM NA.

MISSED APPROACH: Climbing left turn to 2100 direct IRQ VORTAC and hold.

ASOS <b>135.275</b>	AUGUSTA APP CON ★ <b>126.8 270.3</b>	UNICOM <b>123.05</b> (CTAF) <b>0</b>
------------------------	---	---



CATEGORY	A	B	C	D
<b>C</b> CIRCLING	920-1 498 (500-1)		1400-3 978 (1000-3)	

REIL Rwy 5, 11 and 23 **0**  
MIRL Rwy 5-23 and 11-29 **0**

SE-4, 23 JAN 2025 to 20 FEB 2025

SE-4, 23 JAN 2025 to 20 FEB 2025