

WAAS CH <b>99300</b> <b>W08B</b>	APP CRS <b>095°</b>	Rwy Idg <b>8800</b> TDZE <b>1015</b> Apt Elev <b>1026</b>
--	------------------------	---

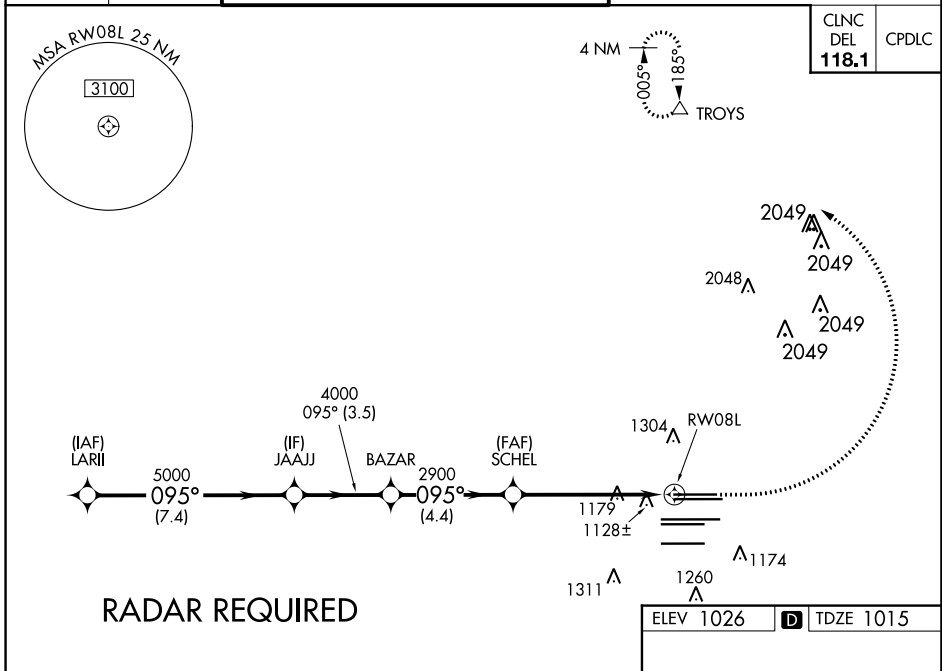
# RNAV (GPS) Y RWY 8L

HARTSFIELD/JACKSON ATLANTA INTL (ATL)

▼ For uncompensated Baro-VNAV systems, LNAV/VNAV NA below -7°C (20°F) or above 54°C (130°F). DME/DME RNP-0.3 NA. For inop ALSF-2, increase LNAV/VNAV all Cats visibility to 1¼ miles. Helicopter visibility reduction below RVR 4000 NA. LNAV procedure NA during simultaneous operations. Simultaneous approach authorized with Rwy 9L or 9R or 10, or Rwy 8L and 10. Use of FD or AP providing RNAV track guidance required during simultaneous operations.

ALSF-2  
MISSED APPROACH:  
Climb to 1500 then  
climbing left turn to  
3500 direct TROYS  
and hold.

D-ATIS ARR <b>119.65</b>	ATLANTA APP CON <b>127.9 379.9</b>	ATLANTA TOWER 8L-26R 8R-26L 9L-27R 9R-27L 10-28 RWYS				ALL RWYS <b>119.1 125.325 123.85 119.3 119.5 254.4</b>	GND CON <b>121.9</b>	ALL RWYS <b>121.75 121.65 254.4</b>
-----------------------------	--	---	--	--	--	--	-------------------------	---



SE-4, 31 OCT 2024 to 28 NOV 2024

SE-4, 31 OCT 2024 to 28 NOV 2024

