

RNAV (RNP) Z RWY 8L HARTSFIELD-JACKSON ATLANTA INTL (ATL)

APP CRS	Rwy Idg	8800
095°	TDZE	1015
	Apt Elev	1026

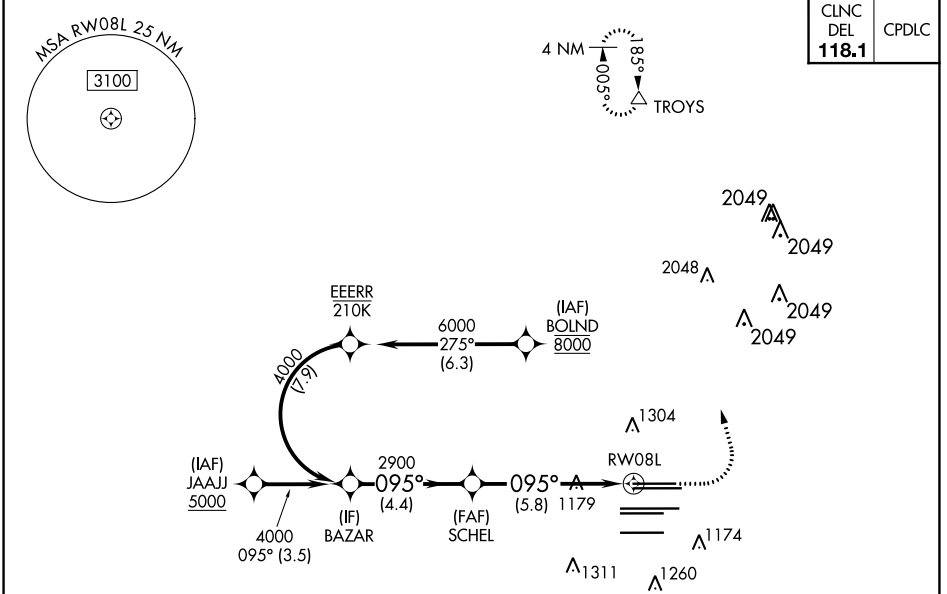
RNP AR APCH - GPS.

▼ For uncompensated Baro-VNAV systems, procedure NA below -5°C or above 54°C. For inop ALS, increase RNP 0.15 all Cats RVR to 5500. Simultaneous approach authorized. Arrival from BOLND NA during simultaneous triple approaches.

ALSF-2

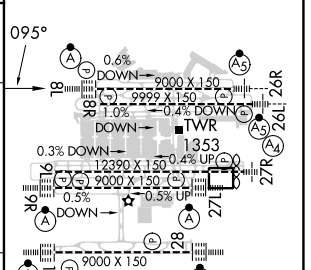
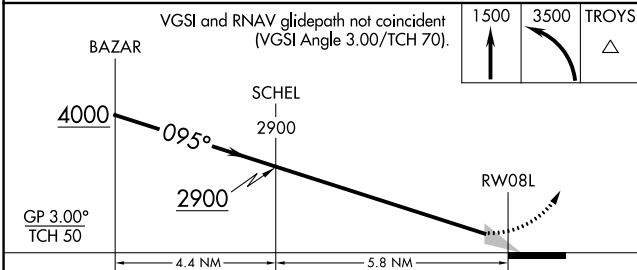
MISSED APPROACH: Climb to 1500 then dimbing left turn to 3500 direct TROYS and hold.

D-ATIS	ATLANTA APP CON	ATLANTA TOWER				ALL RWYS	GND CON	ALL RWYS
ARR 119.65		8L-26R	8R-26L	9L-27R	9R-27L	10-28	(8L-26R,8R-26L) (9L-27R,9R-27L)	10-28
DEP 125.55	127.9 379.9	119.1	125.325	123.85	119.3	119.5	121.9	121.75 121.65 254.4



CLNC DEL	CPDLC
118.1	

ELEV 1026	TDZE 1015
-----------	-----------



CATEGORY	A	B	C	D
RNP 0.15 DA		1380/35	365 (400-%)	
RNP 0.30 DA		1458/45	443 (500-%)	

AUTHORIZATION REQUIRED

HIRL all Rwys
TDZ/CL Rwys 8L, 9R, 10, 26R, 27L and 28

SE-4, 08 AUG 2024 to 05 SEP 2024

SE-4, 08 AUG 2024 to 05 SEP 2024