
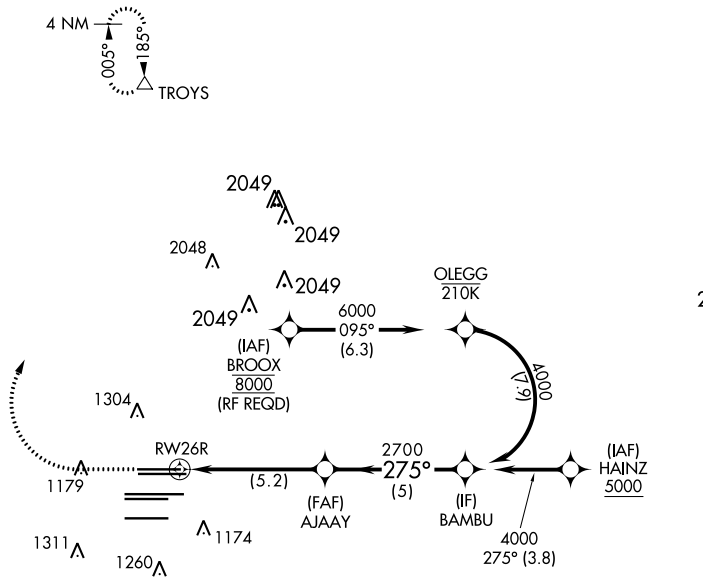


APP CRS	Rwy ldg	<b>8500</b>
<b>275°</b>	TDZE	<b>990</b>
	Apt Elev	<b>1026</b>

**RNAV (RNP) Z RWY 26R**  
HARTSFIELD-JACKSON ATLANTA INTL (ATL)

<p>For uncompensated Baro-VNAV systems, procedure NA below -8°C (18°F) or above 54°C (130°F). GPS required. Simultaneous approach authorized. Arrival from BROOX NA during simultaneous triple approaches.</p>					<p>MALSR</p> 		<p>MISSED APPROACH: Climb to 1500 then climbing right turn to 3500 direct TROYS and hold.</p>		
D-ATIS	ATLANTA APP CON	ATLANTA TOWER				ALL RWYS	GND CON		ALL RWYS
ARR <b>119.65</b>	<b>127.9 379.9</b>	8L-26R	8R-26L	9L-27R	9R-27L	10-28	8L-26R, 8R-26L	9L-27R, 9R-27L	10-28
DEP <b>125.55</b>	<b>127.9 379.9</b>	<b>119.1</b>	<b>125.325</b>	<b>123.85</b>	<b>119.3</b>	<b>119.5</b>	<b>121.9</b>	<b>121.75</b>	<b>121.65 254.4</b>

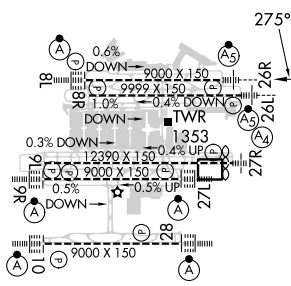


CLNC DEL	CPDLC
<b>118.1</b>	

SE-4, 08 AUG 2024 to 05 SEP 2024

SE-4, 08 AUG 2024 to 05 SEP 2024

ELEV 1026	<b>D</b>	TDZE 990
-----------	----------	----------



HIRL all Rwys  
TDZ/ CL Rwys 8L, 9R, 10, 26R, 27L and 28

<p>MSA RWY 26R 25 NM</p> <p>3100</p>													
<p>1500</p> <p>3500</p> <p>TROYS</p>	<p>VGSI and RNAV glidepath not coincident (VGSI Angle 3.00/TCH 69).</p>												
<p>BAMBUB</p> <p>4000</p> <p>GP 3.00° TCH 55</p>		<p>275°</p> <p>2700</p> <p>2700</p>											
<p>RWY 26R</p> <p>5.2 NM</p> <p>5 NM</p>		<p>2700</p> <p>275°</p>											
<table border="1"> <tr> <th>CATEGORY</th> <th>A</th> <th>B</th> <th>C</th> <th>D</th> </tr> <tr> <td>RNP 0.30 DA</td> <td></td> <td>1402/45</td> <td>412 (400-1)</td> <td></td> </tr> </table>	CATEGORY	A	B	C	D	RNP 0.30 DA		1402/45	412 (400-1)		<p><b>AUTHORIZATION REQUIRED</b></p>		
CATEGORY	A	B	C	D									
RNP 0.30 DA		1402/45	412 (400-1)										