

ATLANTA, GEORGIA


AL-26 (FAA)

24305

RNAV (GPS) PRM RWY 9R (SIMULTANEOUS CLOSE PARALLEL) HARTSFIELD/JACKSON ATLANTA INTL (ATL)

WAAS CH 97400 W09B	APP CRS 095°	Rwy ldg 9000 TDZE 1026 Apt Elev 1026
--	------------------------	---

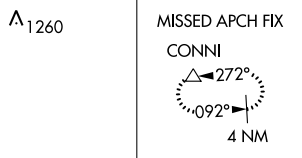
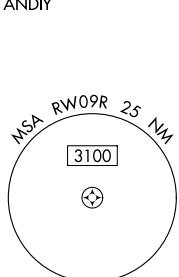
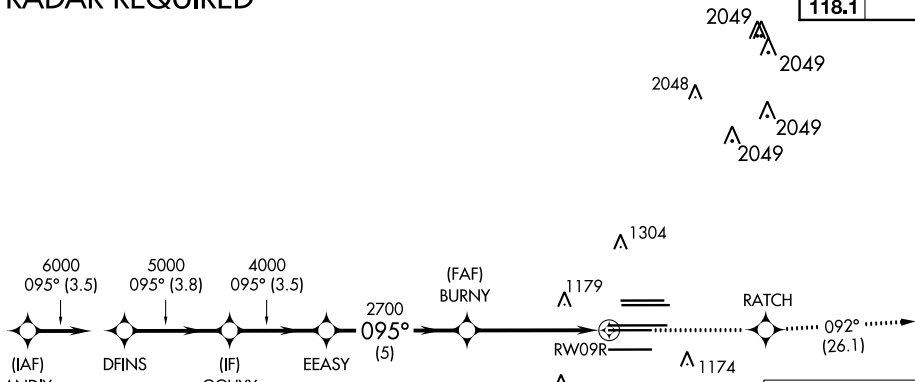
NA For uncompensated Baro-VNAV systems, LNAV/VNAV NA below -7°C (20°F) or above 54°C (130°F). DME/DME RNP-0.3 NA. Simultaneous close parallel approach authorized with ILS PRM and RNAV PRM Rwy 8L or 8R or 10, or Rwy 8L and 10, or Rwy 8R and 10. Dual VHF comm required. See additional requirements on AAUP. Use of FD or AP providing RNAV track guidance required during simultaneous operations.

ALSIF-2  **MISSED APPROACH:** Climb to 4000 direct RATCH and on track 092° to CONNI and hold.

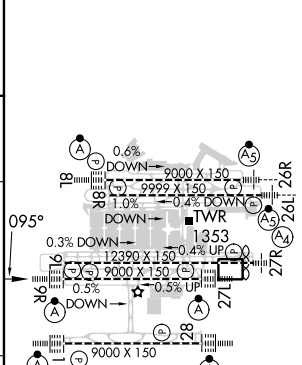
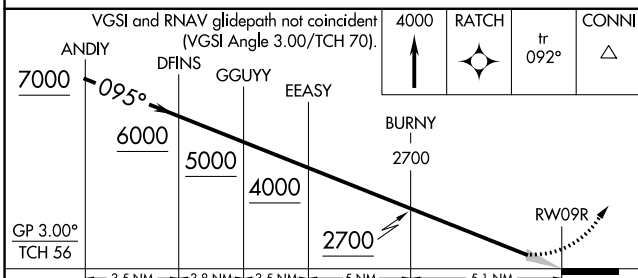
D-ATIS ARR 119.65 DEP 125.55	ATLANTA APP CON 127.9 379.9	ATLANTA TOWER 8L-26R 8R-26L 9L-27R 9R-27L 10-28 RWYS 119.1 125.325 123.85 119.3 119.5 254.4 PRM 132.55	ALL RWYS (8L-26R,8R-26L) (9L-27R,9R-27L) 10-28 RWYS 121.9 121.75 121.65 254.4	GND CON 121.65 254.4
--	---------------------------------------	---	--	--------------------------------

RADAR REQUIRED

CLNC DEL 118.1	CPDLC
-----------------------------	-------



ELEV 1026	<input checked="" type="checkbox"/> TDZE 1026
-----------	---



GP 3.00° TCH 56	3.5 NM	3.8 NM	3.5 NM	5 NM	5.1 NM
CATEGORY	A	B	C	D	
LPV DA		1226/18	200 (200-½)		
LNAV/VNAV DA		1403/40	377 (400-¾)		

HIRL all Rwys
TDZ/CL Rwy 8L, 9R, 10, 26R, 27L and 28

ATLANTA, GEORGIA
Orig-A 12OCT17

33°38'N-84°26'W

HARTSFIELD/JACKSON ATLANTA INTL (ATL)

RNAV (GPS) PRM RWY 9R (SIMULTANEOUS CLOSE PARALLEL)

SE-4, 31 OCT 2024 to 28 NOV 2024

SE-4, 31 OCT 2024 to 28 NOV 2024