

WAAS CH 97400 W09B	APP CRS 095°	Rwy Idg TDZE 1026 Apt Elev 1026
--	------------------------	---

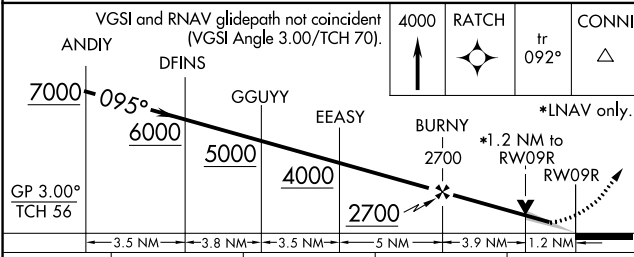
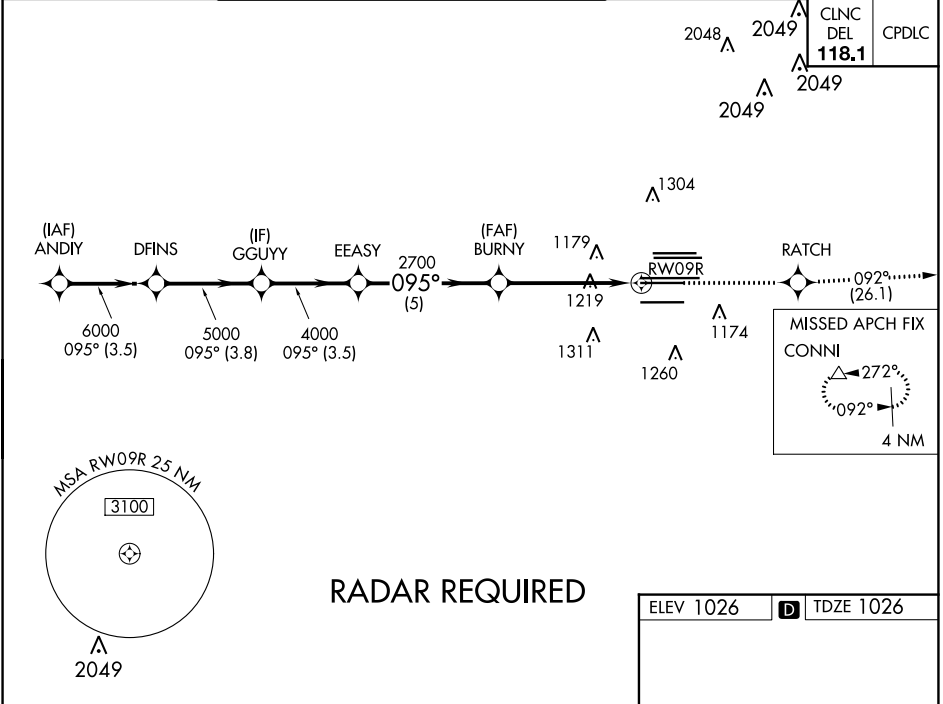
RNAV (GPS) RWY 9R

HARTSFIELD-JACKSON ATLANTA INTL (ATL)

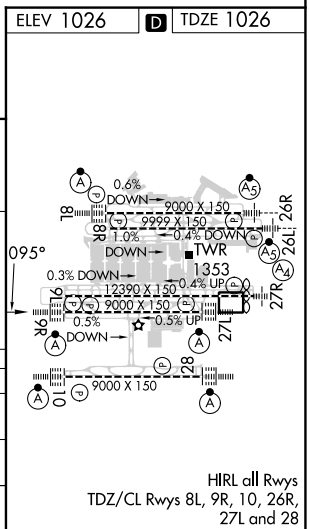
For uncompensated Baro-VNAV systems, LNAV/VNAV NA below -7°C (20°F) or above 54°C (130°F). DME/DME RNP-0.3 NA. Simultaneous approach authorized with Rwy 8L or 8R. LNAV procedure NA during simultaneous operations. Use of FD or AP providing RNAV track guidance required during simultaneous operations.

ALSF-2
MISSED APPROACH: Climb to 4000 direct RATCH and on track 092° to CONNI and hold.

D-ATIS ARR 119.65	ATLANTA APP CON 127.9 379.9	ATLANTA TOWER 8L-26R 8R-26L 9L-27R 9R-27L 10-28 RWYS					ALL RWYS	GND CON 9L-27R, 9R-27L 10-28 RWYS	ALL RWYS		
DEP 125.55	127.9 379.9	119.1	125.325	123.85	119.3	119.5	254.4	121.9	121.75	121.65	254.4



CATEGORY	A	B	C	D
LPV DA		1226/18	200 (200-½)	
LNAV/VNAV DA		1403/40	377 (500-¾)	
LNAV MDA	1480/24	454 (500-½)	1480/45	454 (500-⅞)



SE-4, 03 OCT 2024 to 31 OCT 2024

SE-4, 03 OCT 2024 to 31 OCT 2024