

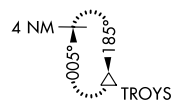
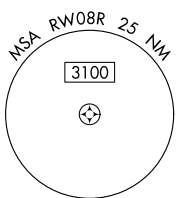
WAAS CH 48800 W08D	APP CRS 095°	Rwy Idg TDZE 1024 Apt Elev 1026	9999
--	------------------------	---	-------------

RNAV (GPS) RWY 8R

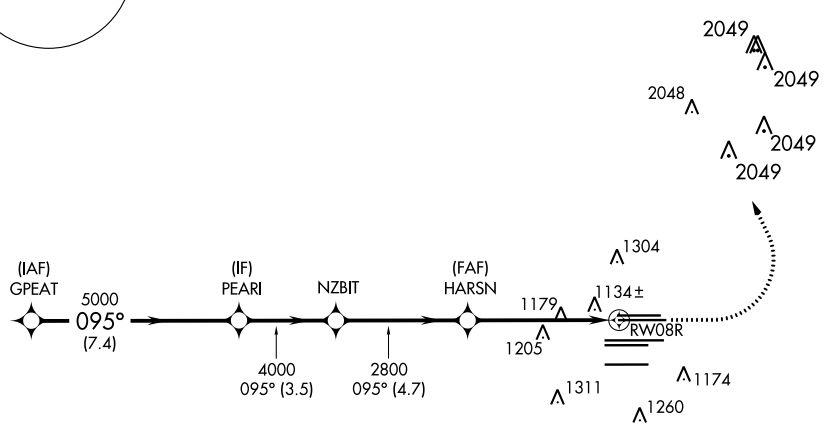
HARTSFIELD-JACKSON ATLANTA INTL (ATL)

RNP APCH.	For uncompensated Baro-VNAV systems, LNAV/VNAV NA below -7°C, or above 54°C. Simultaneous approach authorized with Rwy 9L or 9R or 10. LNAV procedure NA during simultaneous operations. Use of FD or AP providing RNAV track guidance required during simultaneous operations.	MISSED APPROACH: Climb to 1500 then climbing left turn to 3500 direct TROYS and hold.
-----------	---	---

D-ATIS ARR 119.65 DEP 125.55	ATLANTA APP CON 127.9 379.9	ATLANTA TOWER					ALL RWYS	GND CON	ALL RWYS		
		8L-26R	8R-26L	9L-27R	9R-27L	10-28	(8L-26R,8R-26L)	(9L-27R,9R-27L)	10-28		
		119.1	125.325	123.85	119.3	119.5	254.4	121.9	121.75	121.65	254.4



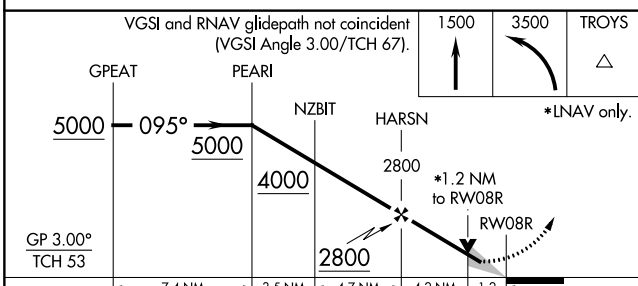
CLNC DEL	CPDLC
118.1	



SE-4, 03 OCT 2024 to 31 OCT 2024

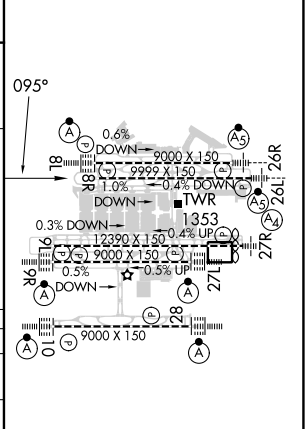
SE-4, 03 OCT 2024 to 31 OCT 2024

RADAR REQUIRED



ELEV	1026	TDZE	1024
------	------	------	------

CATEGORY	A	B	C	D
LPV DA		1282/40	258 (300-¾)	
LNAV/VNAV DA		1516-1⅓	492 (500-1⅓)	
LNAV MDA	1480/55	456 (500-1)	1480-1⅓	456 (500-1⅓)



HIRL all Rwws
TDZ/CL Rwws 8L, 9R,
10, 26R, 27L and 28