

ATLANTA, GEORGIA

AL-26 (FAA)

# ILS PRM RWY 28 (CAT II) (CLOSE PARALLEL)

24165

LOC/DME I-PKU <b>111.75</b> Chan <b>54(Y)</b>	APP CRS <b>275°</b>	Rwy ldg TDZE Apt Elev	<b>9000</b> <b>998</b> <b>1026</b>
---	------------------------	-----------------------------	--

HARTSFIELD-JACKSON ATLANTA INTL (ATL)

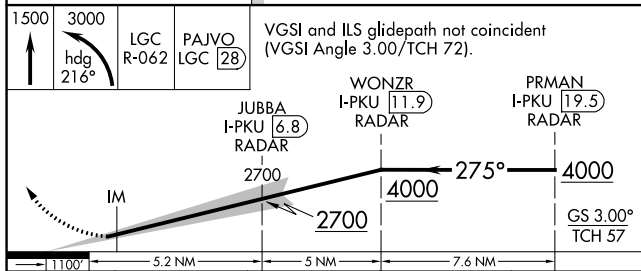
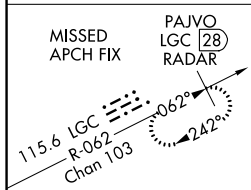
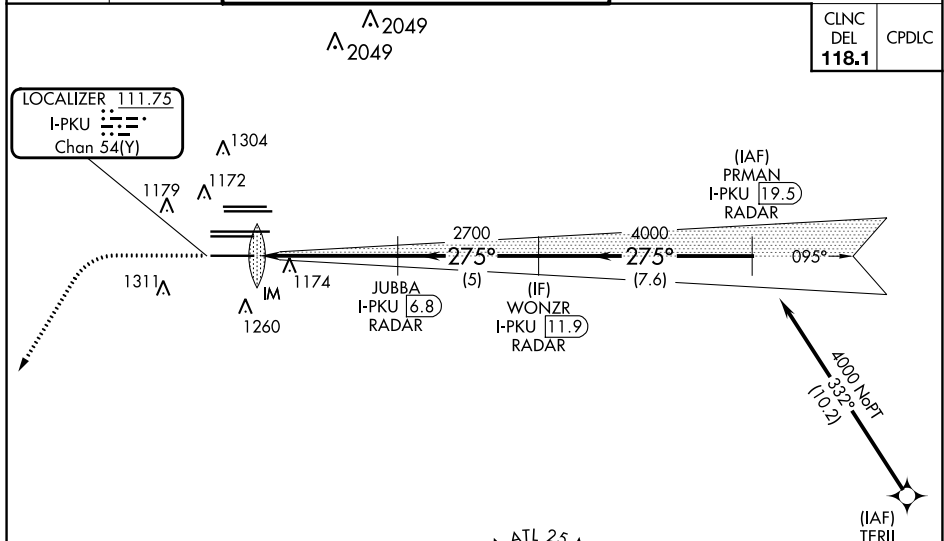
RNAV 1-GPS or RADAR required for procedure entry.  
From TERII: RNAV 1-GPS required. DME or RADAR required.

Simultaneous approach authorized. Use of FD or AP required during simultaneous operations. Dual VHF comm required. See additional requirements on AAUP.

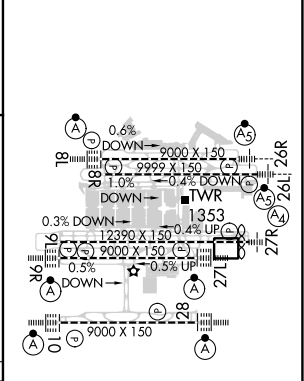
ALSF-2

MISSED APPROACH: Climb to 1500 then climbing left turn to 3000 on heading 216° and LGC VORTAC R-062 to PAJVO/LGC 28 DME/RADAR and hold.

D-ATIS ARR <b>119.65</b> DEP <b>125.55</b>	ATLANTA APP CON <b>127.9 379.9</b>	ATLANTA TOWER 8L-26R 8R-26L 9L-27R 9R-27L 10-28 RWYS <b>119.1 125.325 123.85 119.3 119.5 254.4</b> PRM <b>133.425</b>	ALL RWYS (8L-26R,8R-26L) (9L-27R,9R-27L) 10-28 <b>121.9 121.75 121.65 254.4</b>	GND CON ALL RWYS
--	--	--	--	------------------------



ELEV <b>1026</b>	<b>D</b>	TDZE <b>998</b>
------------------	----------	-----------------



CATEGORY A B C D

S-ILS 28 RA 188/12 100 DA 1098

**CATEGORY II ILS - SPECIAL AIRCREW & AIRCRAFT CERTIFICATION REQUIRED**

HIRL all Rwys  
TDZ/CL Rwys 8L, 9R,  
10, 26R, 27L and 28

ATLANTA, GEORGIA  
Amdt 5 07OCT21

33°38'N-84°26'W

HARTSFIELD-JACKSON ATLANTA INTL (ATL)

# ILS PRM RWY 28 (CAT II) (CLOSE PARALLEL)

SE-4, 03 OCT 2024 to 31 OCT 2024

SE-4, 03 OCT 2024 to 31 OCT 2024