

ATLANTA, GEORGIA

AL-26 (FAA)

24305
ILS PRM RWY 27L (SA CAT I)

(CLOSE PARALLEL)

HARTSFIELD/JACKSON ATLANTA INTL (ATL)

LOC/DME I-FSQ 108.5 Chan 22	APP CRS 275°	Rwy Idg TDZE Apt Elev 8865 999 1026
---	------------------------	---

RADAR required for procedure entry. DME or RADAR required.

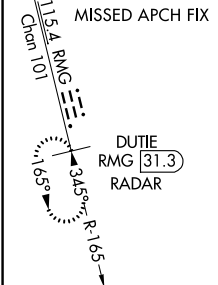
Simultaneous approach authorized. Use of FD or AP required during simultaneous operations. Dual VHF Comm required. See additional requirements on AAUP. Requires specific OPSPEC, MSPEC, or LOA approval.

ALSf-2

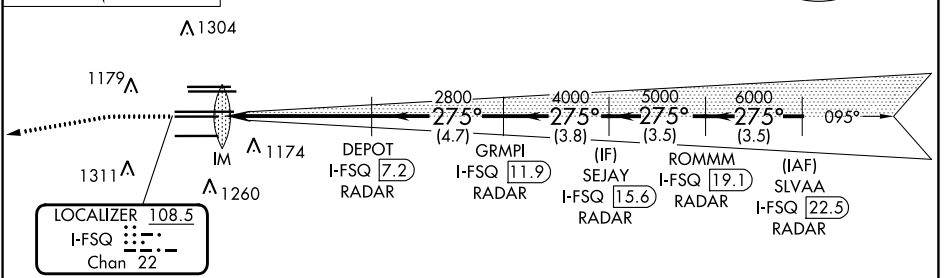
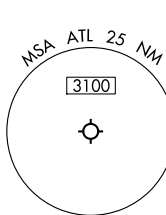
MISSED APPROACH: Climb to 1500 then climbing left turn to 4000 on heading 265° and RMG VORTAC R-165 to DUTIE/RMG 31.3 DME/RADAR and hold.

D-ATIS ARR 119.65 DEP 125.55	ATLANTA APP CON 127.9 379.9	ATLANTA TOWER 8L-26R 8R-26L 9L-27R 9R-27L 10-28 RWYS 119.1 125.325 123.85 119.3 119.5 254.4 PRM 132.55	ALL RWYS 121.9 121.75 121.65 254.4
--	--	---	---

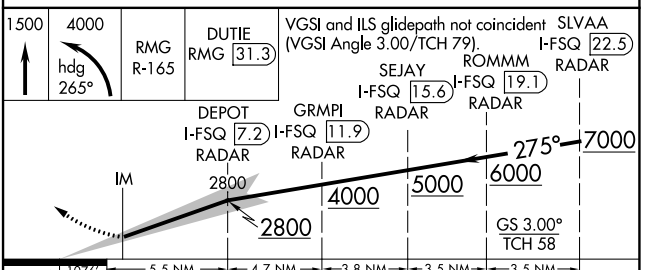
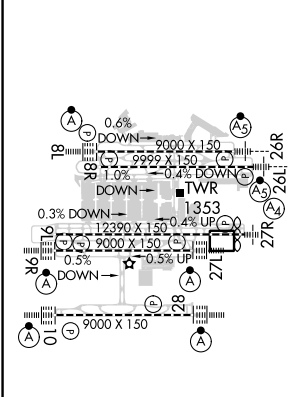
GND CON (8L-26R,8R-26L) (9L-27R,9R-27L) 10-28 RWYS 121.9 121.75 121.65 254.4	ALL RWYS 121.9 121.75 121.65 254.4
---	---



CLNC DEL 118.1	CPDLC
-----------------------------	-------



ELEV 1026	D	TDZE 999
------------------	----------	-----------------



1078	5.5 NM	4.7 NM	3.8 NM	3.5 NM	3.5 NM
CATEGORY	A	B	C	D	
S-ILS 27L	RA 214/14 150 DA 1149				

SA CATEGORY I ILS- SPECIAL AIRCREW & AIRCRAFT CERTIFICATION REQUIRED

HIRL all Rwys
TDZ/CL Rwys 8L, 9R,
10, 26R, 27L and 28

33°38'N-84°26'W

HARTSFIELD/JACKSON ATLANTA INTL (ATL)

ILS PRM RWY 27L (SA CAT I) (CLOSE PARALLEL)

SE-4, 31 OCT 2024 to 28 NOV 2024

SE-4, 31 OCT 2024 to 28 NOV 2024