

ATLANTA, GEORGIA

AL-26 (FAA)

24305

ILS PRM RWY 10 (SA CAT I) (CLOSE PARALLEL)

HARTSFIELD/JACKSON ATLANTA INTL (ATL)

LOC/DME I-OMO 111.55 Chan 52 (Y)	APP CRS 095°	Rwy Idg 9000 TDZE 1000 Apt Elev 1026
--	------------------------	---

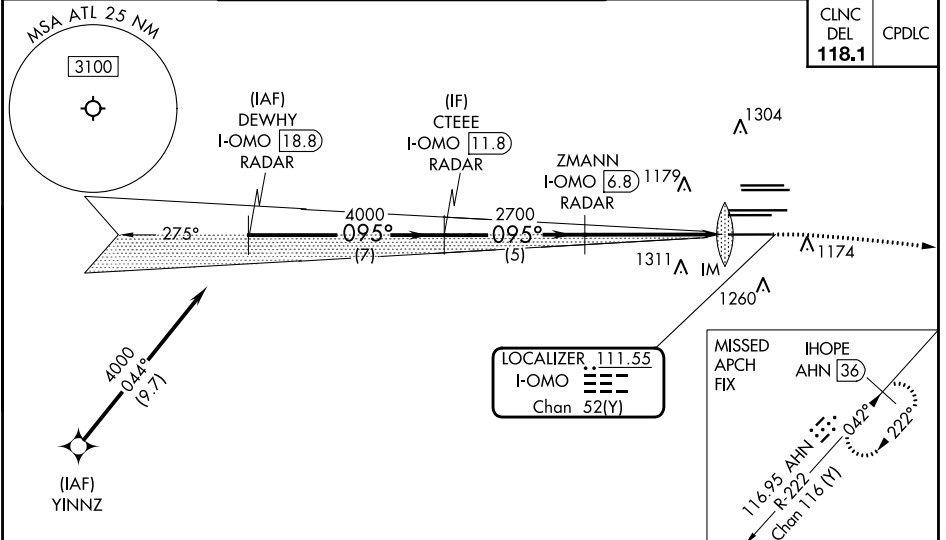
DME or RADAR required.
RNP APCH - GPS from YINNZ.

▼ Simultaneous approach authorized. Procedure NA when glide slope not available (ILS procedures only). Dual VHF Comm required. See additional requirements on AAUP. Requires special OPSPEC, MSPEC, or LOA approval and use of HUD to DH.

ALS F-2
ⓐ

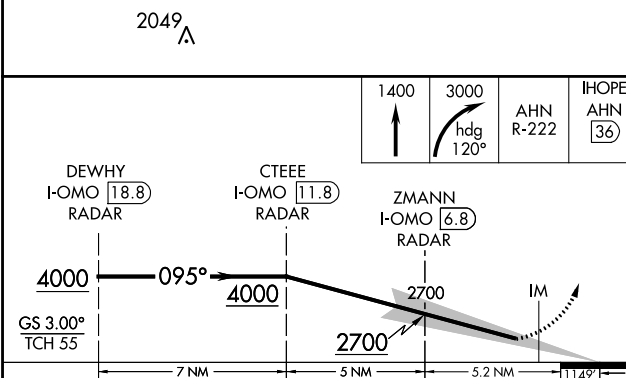
MISSED APPROACH: Climb to 1400 then climbing right turn to 3000 on heading 120° and AHN R-222 to IHOPE/AHN 36 DME and hold.

D-ATIS ARR 119.65 DEP 125.55	ATLANTA APP CON 127.9 379.9	ATLANTA TOWER 8L-26R 8R-26L 9L-27R 9R-27L 119.1 125.325 123.85 119.3 119.5 254.4 PRM 133.425	ALL 10-28 RWYS 119.5 254.4	GND CON (8L-26R,8R-26L) (9L-27R,9R-27L) 10-28 RWYS 121.9 121.75 121.65 254.4	ALL RWYS 254.4
--	--	---	---	---	-----------------------------

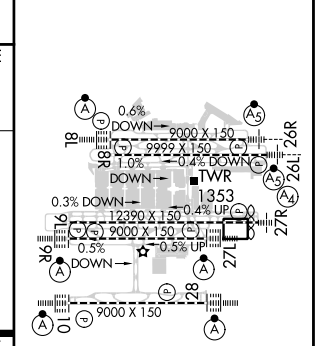


SE-4, 31 OCT 2024 to 28 NOV 2024

SE-4, 31 OCT 2024 to 28 NOV 2024



ELEV 1026	D TDZE 1000
-----------	--------------------



CATEGORY	A	B	C	D
S-ILS 10	RA 180/14 150 DA 1150			

SA CATEGORY I ILS - SPECIAL AIRCREW & AIRCRAFT CERTIFICATION REQUIRED

HIRL all Rwys
TDZ/Cl Rws 8L, 9R, 10, 26R,
27L and 28

ATLANTA, GEORGIA
Amdt 5 30DEC21

33°38'N-84°26'W

HARTSFIELD/JACKSON ATLANTA INTL (ATL)

ILS PRM RWY 10 (SA CAT I) (CLOSE PARALLEL)