

LOC/DME I-HZK 110.5 Chan 42	APP CRS 095°	Rwy Idg 9L 1170 9000 9R 1019 1026 TDZE Apt Elev 1026 1026
---	------------------------	--

ILS or LOC RWY 9L

HARTSFIELD-JACKSON ATLANTA INTL (ATL)

RADAR required for procedure entry, DME.
 Simultaneous approach authorized.
 Rwy 9L helicopter visibility reduction below RVR 4000 NA.



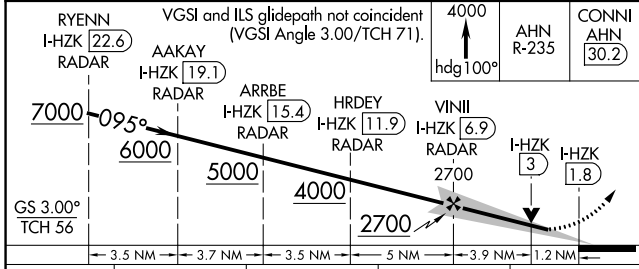
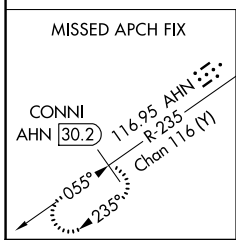
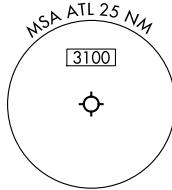
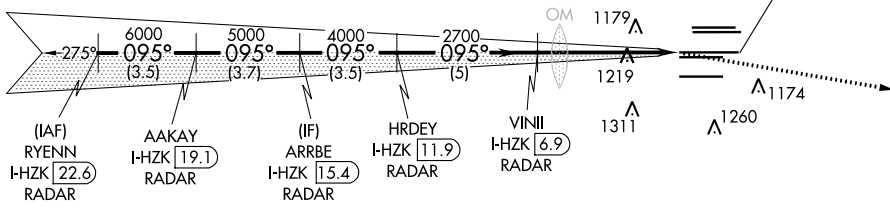
MISSED APPROACH: Climb to 4000 on heading 100° and AHN VOR/DME R-235 to CONNI/AHN 30.2 DME and hold.

D-ATIS ARR 119.65	ATLANTA APP CON 127.9 379.9	ATLANTA TOWER 8L-26R 8R-26L 9L-27R 9R-27L 10-28 RWYS 119.1 125.325 123.85 119.3 119.5 254.4				ALL RWYS 121.9	GND CON 8L-26R,8R-26L 9L-27R,9R-27L 10-28 RWYS 121.75 121.65 254.4	ALL RWYS
-----------------------------	--	--	--	--	--	-----------------------------	---	-------------

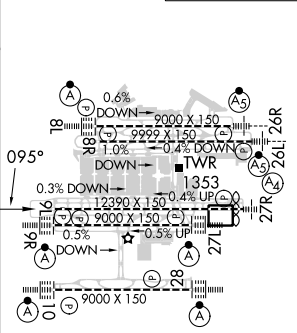
CINC DEL 118.1	CPDLC
-----------------------------	-------

2049 Δ

LOCALIZER **110.5**
I-HZK
Chan **42**



ELEV 1026	TDZE 9L 1019	TDZE 9R 1026
-----------	--------------	--------------



CATEGORY	A	B	C	D
S-ILS 9L	1359/50		340 (400-1)	
S-LOC 9L	1480/55	461 (500-1)	1480-1 $\frac{3}{8}$	461 (500-1 $\frac{3}{8}$)
SIDESTEP 9R	1480/55	454 (500-1)	1480-1 $\frac{3}{8}$ 454 (500-1 $\frac{3}{8}$)	1480-1 $\frac{1}{2}$ 454 (500-1 $\frac{1}{2}$)

HIRL all Rwys TDZ/CL Rwys 8L, 9R, 10, 26R, 27L and 28					
FAF to MAP 5.1 NM					
Knots	60	90	120	150	180
Min:Sec	5:06	3:24	2:33	2:02	1:42

SE-4, 03 OCT 2024 to 31 OCT 2024

SE-4, 03 OCT 2024 to 31 OCT 2024