

ATLANTA, GEORGIA

AL-26 (FAA)

24305

LOC/DME I-PKU <b>111.75</b> Chan <b>54(Y)</b>	APP CRS <b>275°</b>	Rwy ldg TDZE <b>998</b> Apt Elev <b>1026</b>
---	------------------------	--

# ILS or LOC RWY 28

HARTSFIELD/JACKSON ATLANTA INTL (ATL)

RNAV 1-GPS or RADAR required for procedure entry.  
From TERII: RNAV 1-GPS required. DME or RADAR required.

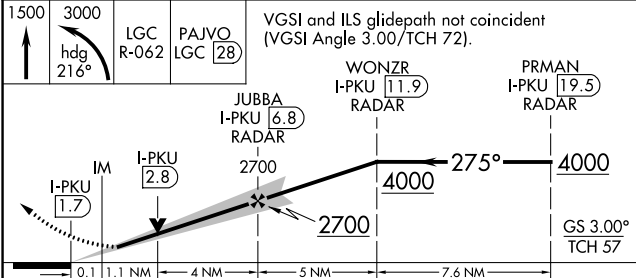
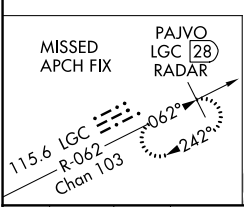
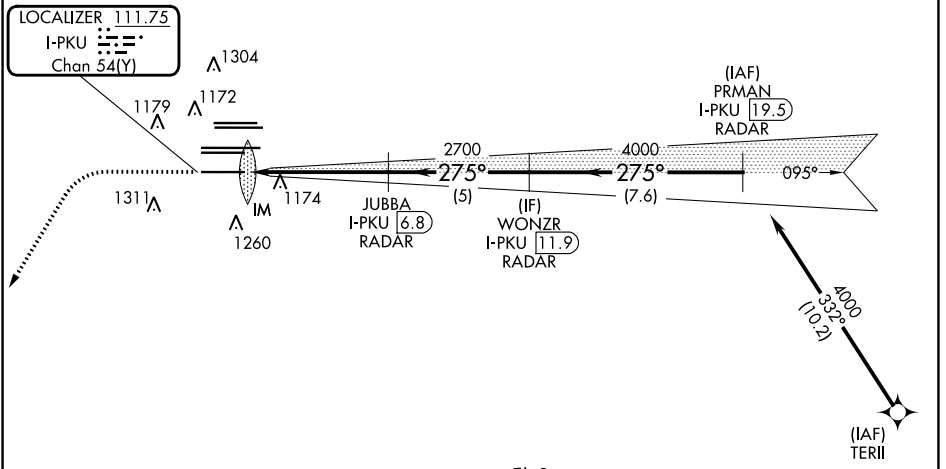
ALSf-2

MISSED APPROACH: Climb to 1500 then climbing left turn to 3000 on heading 216° and LGC VORTAC R-062 to PAJVO/LGC 28 DME/RADAR and hold.

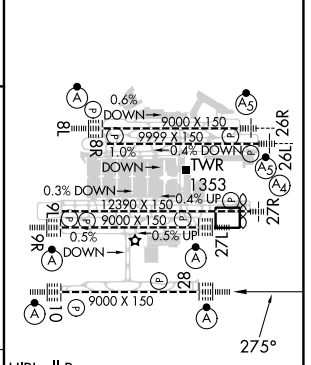
Simultaneous approach authorized.

D-ATIS ARR <b>119.65</b>	ATLANTA APP CON APP <b>127.9 379.9</b>	ATLANTA TOWER 8L-26R 8R-26L 9L-27R 9R-27L 10-28 RWYS				ALL RWYS <b>119.3 119.5 254.4</b>	GND CON (8L-26R,8R-26L) (9L-27R,9R-27L) 10-28 RWYS	ALL RWYS <b>121.9 121.75 121.65 254.4</b>
-----------------------------	---	---	--	--	--	--------------------------------------	---	--

$\Delta$ 2049 $\Delta$ 2049		CLNC DEL <b>118.1</b>	CPDLC
--------------------------------	--	--------------------------	-------



ELEV 1026	TDZE 998
-----------	----------



CATEGORY	A	B	C	D
S-ILS 28	1198/18		200 (200-1/2)	
S-LOC 28	1440/24	442 (500-1/2)	1440/45	442 (500-7/8)

HIRL all Rws					
TDZ/CL Rws 8L, 9R, 10, 26R, 27L and 28					
FAF to MAP 5.2 NM					
Knots	60	90	120	150	180
Min:Sec	5:12	3:28	2:36	2:05	1:44

ATLANTA, GEORGIA  
Amdt 5 07OCT21

HARTSFIELD/JACKSON ATLANTA INTL (ATL)  
33°38'N-84°26'W

# ILS or LOC RWY 28

SE-4, 31 OCT 2024 to 28 NOV 2024

SE-4, 31 OCT 2024 to 28 NOV 2024