

LOC/DME I-PKU <b>111.75</b> Chan <b>54(Y)</b>	APP CRS <b>275°</b>	Rwy ldg TDZE Apt Elev <b>9000</b> <b>998</b> <b>1026</b>
---	------------------------	---

# ILS RWY 28 (SA CAT I)

## HARTSFIELD-JACKSON ATLANTA INTL (ATL)

RNAV 1-GPS or RADAR required for procedure entry.  
From TERII: RNAV 1-GPS required. DME or RADAR required.

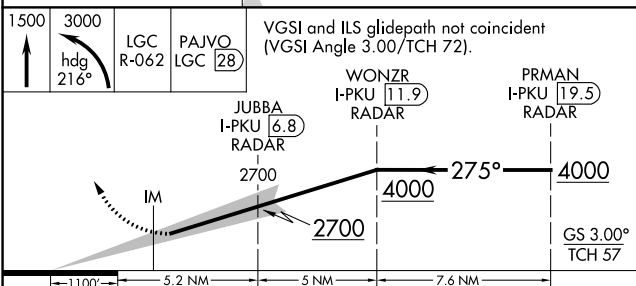
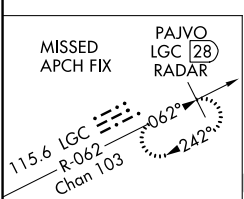
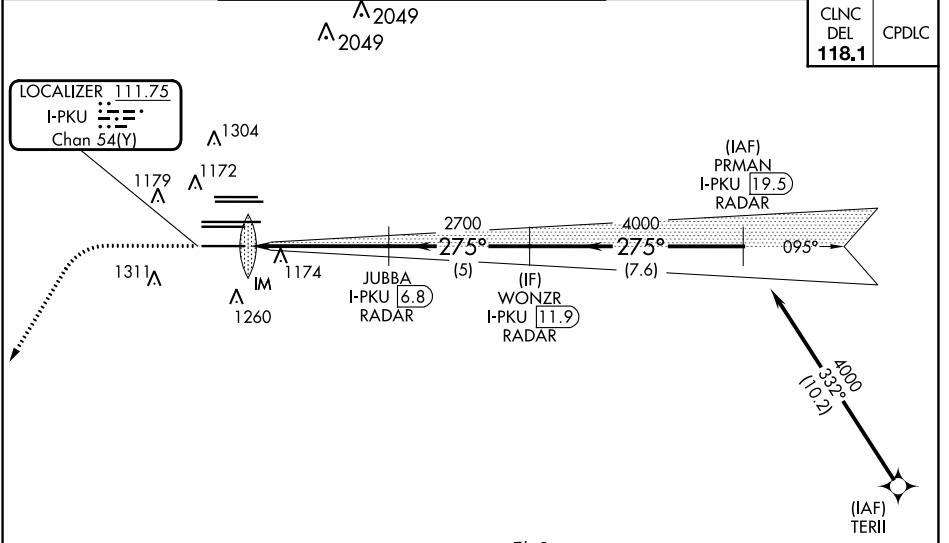
Simultaneous approach authorized.  
Requires specific OPSPEC, MSPEC, or LOA approval.

ALSIF-2

MISSED APPROACH: Climb to 1500 then climbing left turn to 3000 on heading 216° and LGC VORTAC R-062 to PAJVO/LGC 28 DME/RADAR and hold.

D-ATIS ARR <b>119.65</b>	ATLANTA APP CON 127.9 379.9	ATLANTA TOWER 8L-26R 8R-26L 9L-27R 9R-27L 10-28 RWYS 119.1 125.325 123.85 119.3 119.5 254.4				ALL RWYS 121.9	GND CON 121.75	ALL RWYS 121.65 254.4
-----------------------------	-----------------------------------	---	--	--	--	----------------------	-------------------	-----------------------------

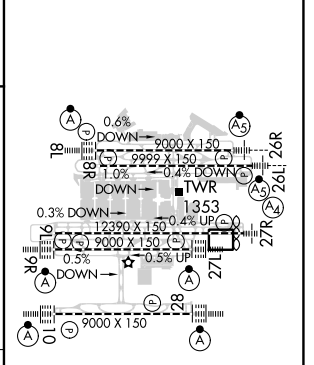
CLNC DEL <b>118.1</b>	CPDLC
-----------------------------	-------



CATEGORY	A	B	C	D
S-ILS 28	RA 264/14		150 DA 1148	

### SA CATEGORY I ILS - SPECIAL AIRCREW & AIRCRAFT CERTIFICATION REQUIRED

ELEV 1026	TDZE 998
-----------	----------



HIRL all Rwy's  
TDZ/CL Rwy's 8L, 9R,  
10, 26R, 27L and 28

SE-4, 03 OCT 2024 to 31 OCT 2024

SE-4, 03 OCT 2024 to 31 OCT 2024