

LOC/DME I-FSQ <b>108.5</b> Chan 22	APP CRS <b>275°</b>	Rwy ldg TDZE Apt Elev	<b>8865</b> <b>999</b> <b>1026</b>
------------------------------------------	------------------------	-----------------------------	------------------------------------------

# ILS RWY 27L (SA CAT I)

HARTSFIELD-JACKSON ATLANTA INTL (ATL)

DME or RADAR required.  
RADAR required for procedure entry.

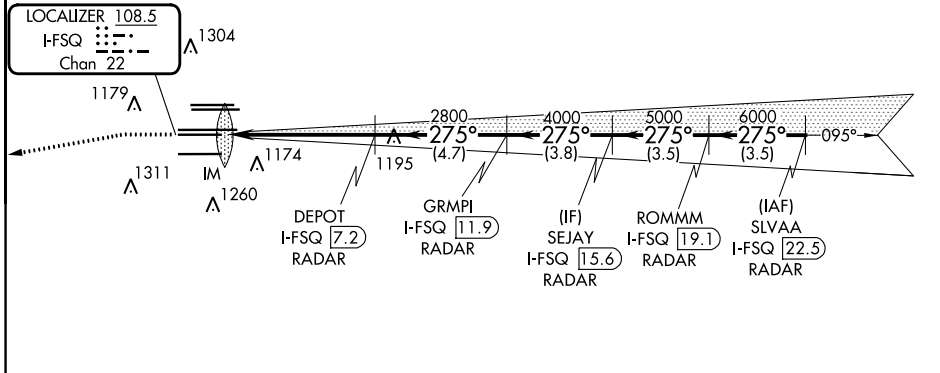
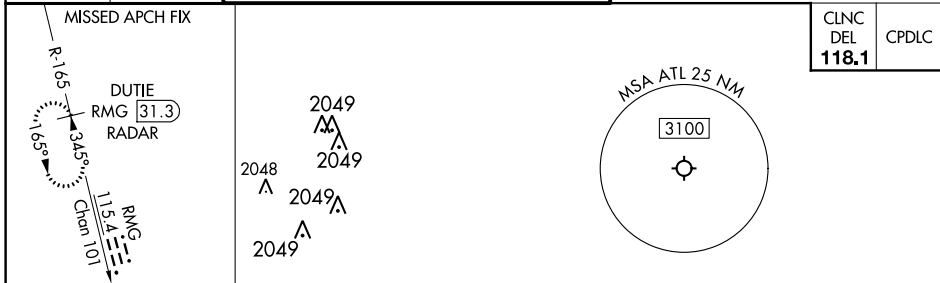
Simultaneous approach authorized.  
Requires specific OPSPEC, MSPEC, or LOA approval.

ALSF-2

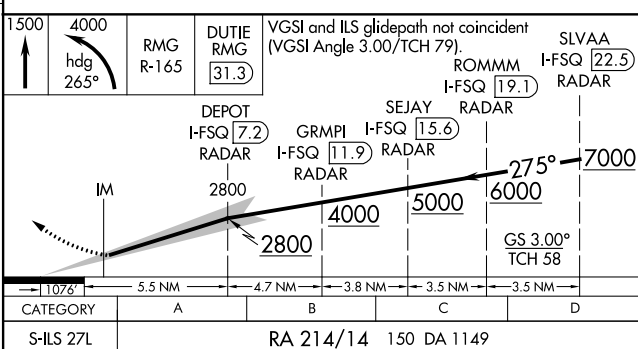
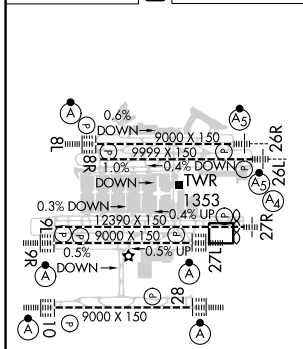


MISSED APPROACH: Climb to 1500 then climbing left turn to 4000 on heading 265° and RMG VORTAC R-165 to DUTIE/RMG 31.3 DME/RADAR and hold.

D-ATIS ARR <b>119.65</b>	ATLANTA APP CON DEP <b>127.9 379.9</b>	ATLANTA TOWER 8L-26R 8R-26L 9L-27R 9R-27L 10-28 RWYS					ALL RWYS	GND CON 10-28	ALL RWYS		
		<b>119.1</b>	<b>125.325</b>	<b>123.85</b>	<b>119.3</b>	<b>119.5</b>	<b>254.4</b>	<b>121.9</b>	<b>121.75</b>	<b>121.65</b>	<b>254.4</b>



ELEV 1026	<b>D</b>	TDZE 999
-----------	----------	----------



SA CATEGORY I ILS- SPECIAL AIRCREW & AIRCRAFT CERTIFICATION REQUIRED

HIRL all Rwys  
TDZ/CL Rwys 8L, 9R,  
10, 26R, 27L and 28

SE-4, 03 OCT 2024 to 31 OCT 2024

SE-4, 03 OCT 2024 to 31 OCT 2024