

ATLANTA, GEORGIA

AL-26 (FAA)

24137

LOC/DME I-FSQ <b>108.5</b> Chan <b>22</b>	APP CRS <b>275°</b>	Rwy Idg TDZE Apt Elev	<b>8865</b> <b>999</b> <b>1026</b>
---	------------------------	-----------------------------	--

# ILS RWY 27L (CAT II)

HARTSFIELD-JACKSON ATLANTA INTL (ATL)

DME or RADAR required.  
RADAR required for procedure entry.

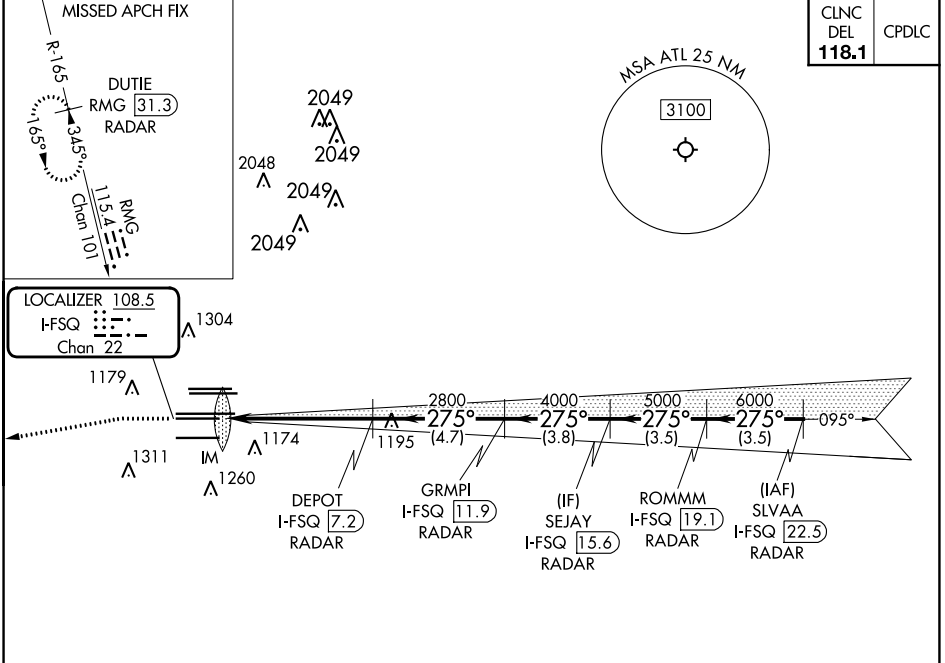
Simultaneous approach authorized.

ALSF-2

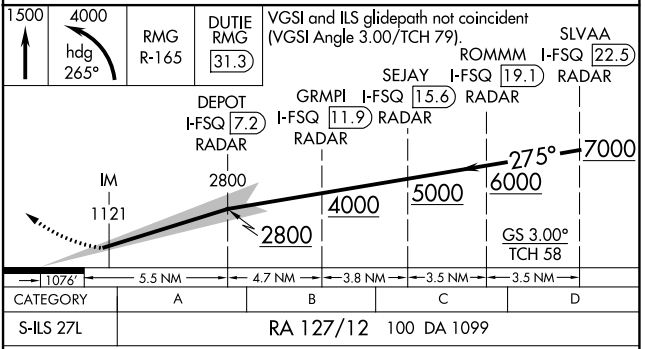
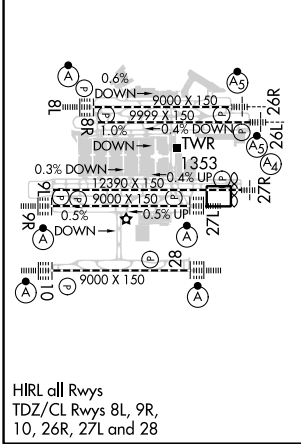


MISSED APPROACH: Climb to 1500 then climbing left turn to 4000 on heading 265° and RMG VORTAC R-165 to DUTIE/RMG 31.3 DME/RADAR and hold.

D-ATIS ARR <b>119.65</b>	ATLANTA APP CON DEP <b>125.55</b>	ATLANTA TOWER 8L-26R 8R-26L 9L-27R 9R-27L 10-28 RWYS	ALL RWYS (8L-26R,8R-26L) (9L-27R,9R-27L) 10-28 RWYS	GND CON 10-28 RWYS	ALL RWYS
<b>127.9</b>	<b>379.9</b>	<b>119.1 125.325 123.85 119.3 119.5 254.4</b>	<b>121.9</b>	<b>121.75</b>	<b>121.65 254.4</b>



ELEV 1026	<b>D</b>	TDZE 999
-----------	----------	----------



**CATEGORY II ILS- SPECIAL AIRCREW & AIRCRAFT CERTIFICATION REQUIRED**

ATLANTA, GEORGIA  
Amdt 19 22APR21

HARTSFIELD-JACKSON ATLANTA INTL (ATL)  
33°38'N-84°26'W

# ILS RWY 27L (CAT II)

SE-4, 03 OCT 2024 to 31 OCT 2024

SE-4, 03 OCT 2024 to 31 OCT 2024