

LOC/DME I-GXZ <b>110.1</b> Chan <b>38</b>	APP CRS <b>275°</b>	Rwy ldg TDZE Apt Elev <b>8500</b> <b>990</b> <b>1026</b>
---	------------------------	---

**ILS RWY 26R (SA CAT I & II)**  
HARTSFIELD/JACKSON ATLANTA INTL (ATL)

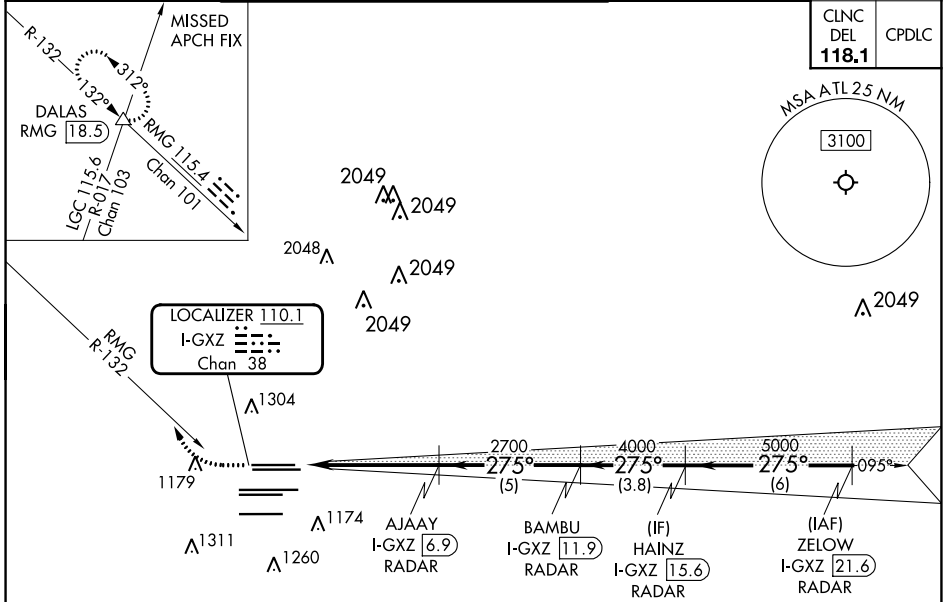
**RADAR required.**

SA CAT I/II: Requires specific OPSPEC, MSPEC, or LOA approval. Simultaneous approach authorized.

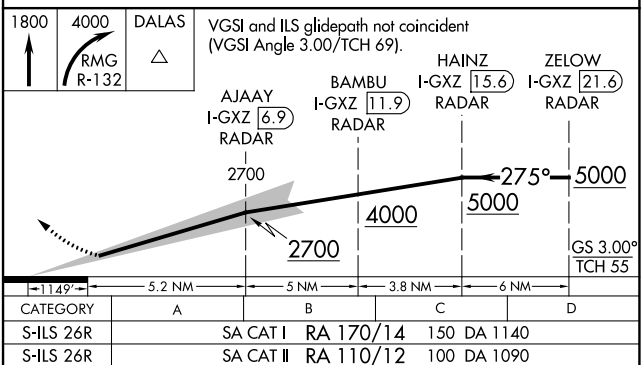
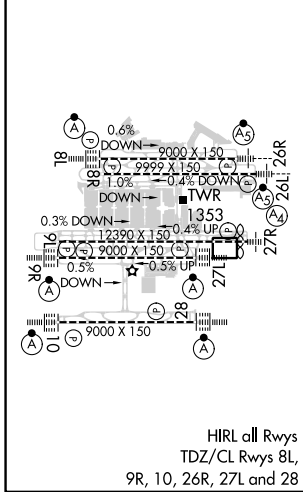
MALSR

MISSED APPROACH: Climb to 1800 then climbing right turn to 4000 on RMG VORTAC R-132 to DALAS INT/RMG 18.5 DME and hold.

D-ATIS ARR <b>119.65</b>	ATLANTA APP CON DEP <b>127.9 379.9</b>	ATLANTA TOWER 8L-26R 8R-26L 9L-27R 9R-27L 10-28 RWYS <b>119.1 125.325 123.85 119.3 119.5 254.4</b>	ALL RWYS <b>121.9</b>	GND CON (8L-26R,8R-26L) (9L-27R,9R-27L) 10-28 RWYS <b>121.75 121.65 254.4</b>
-----------------------------	--	--	-----------------------------	---



ELEV 1026	<b>D</b> TDZE 990
-----------	-------------------



**SA CATEGORY I & II ILS - SPECIAL AIRCREW & AIRCRAFT CERTIFICATION REQUIRED**

SE-4, 31 OCT 2024 to 28 NOV 2024

SE-4, 31 OCT 2024 to 28 NOV 2024