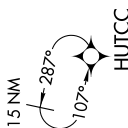


SE-4, 03 OCT 2024 to 31 OCT 2024

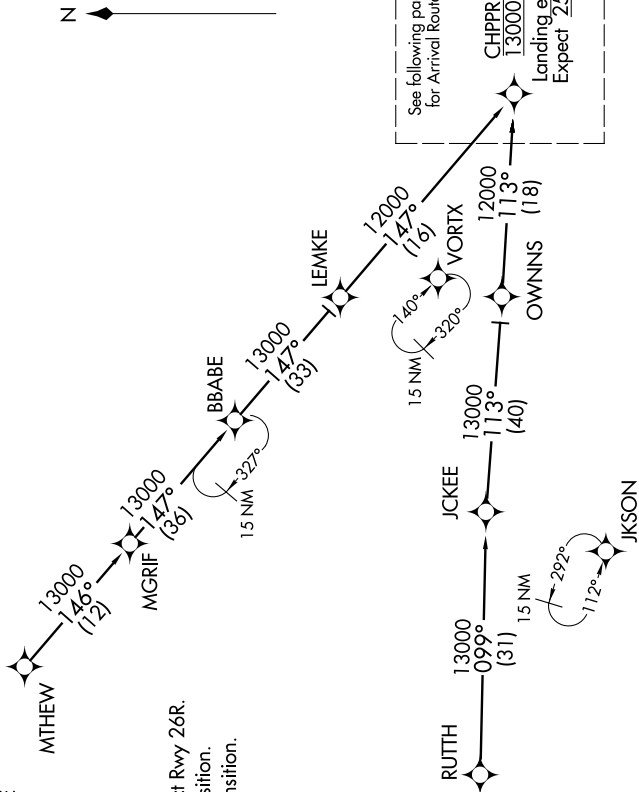
D-ATIS ARR
119.65
ATLANTA APP CON
128.0 379.9



- NOTE: RADAR required.
- NOTE: RNAV 1.
- NOTE: DME/DME/IRU or GPS required.
- NOTE: Turbojet aircraft only.
- NOTE: Landing east select Rwy 8L, landing west select Rwy 26R.
- NOTE: Landing east select Rwy 8L, landing west select Rwy 26R.
- NOTE: Landing Rwy 9R: Select DFINS approach transition.
- NOTE: Landing Rwy 9L: Select AAKAY approach transition.



BBABE TRANSITION [BBABE.CHPPR1]: For KHSV departures or assigned by ATC only.
 LEMKE TRANSITION [LEMKE.CHPPR1]: For KCHA departures or assigned by ATC only.
 MTHEW TRANSITION [MTHEW.CHPPR1]
 RUITH TRANSITION [RUITH.CHPPR1]



See following page
for Arrival Routes.

CHPPR
13000
Landing east:
Expect 250K

(CONTINUED ON FOLLOWING PAGES)

NOTE: Chart not to scale.

SE-4, 03 OCT 2024 to 31 OCT 2024