

VOR/DME AST <b>114.0</b> Chan <b>87</b>	APP CRS <b>070°</b>	Rwy Idg <b>4894</b> TDZE <b>14</b> Apt Elev <b>14</b>
---	------------------------	---

# COPTER VOR RWY 8

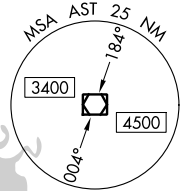
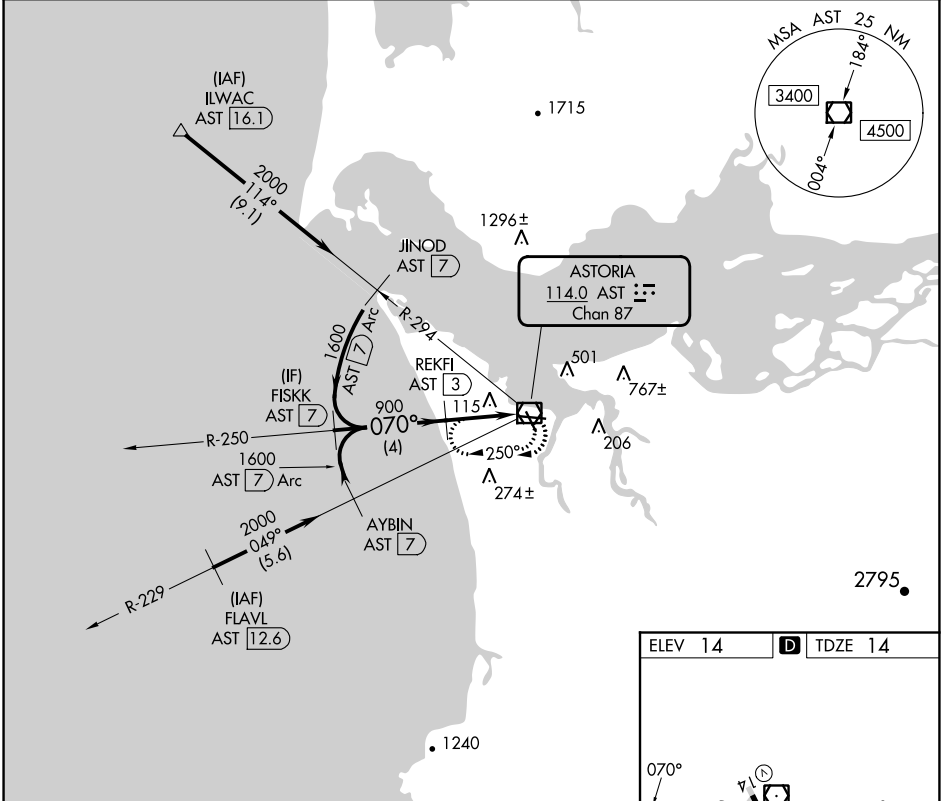
ASTORIA RGNL (AST)

DME required.

▲ NA

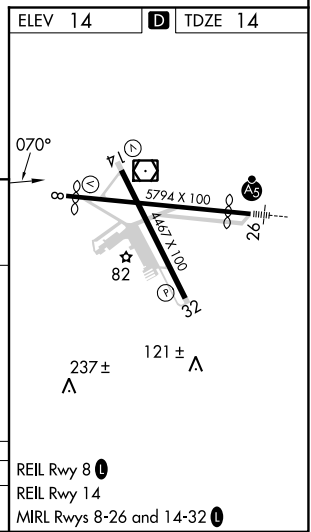
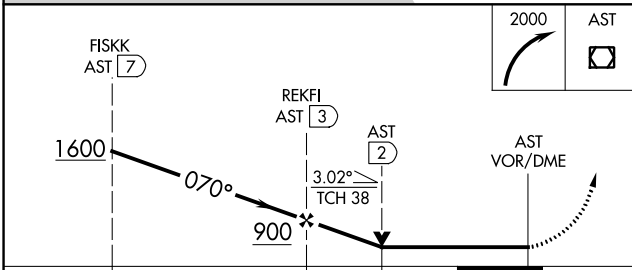
MISSED APPROACH: Climbing right turn to 2000 in AST VOR/DME holding pattern.

ASOS <b>135.375</b>	SEATTLE CENTER <b>124.2 317.6</b>	UNICOM <b>122.8 (CTAF) 0</b>
------------------------	--------------------------------------	---------------------------------



NW-1, 08 AUG 2024 to 05 SEP 2024

NW-1, 08 AUG 2024 to 05 SEP 2024



CATEGORY	COPTER	REIL Rwy 8
H-8	580-3/4 566 (600-3/4)	REIL Rwy 14
		MIRL Rwy 8-26 and 14-32