

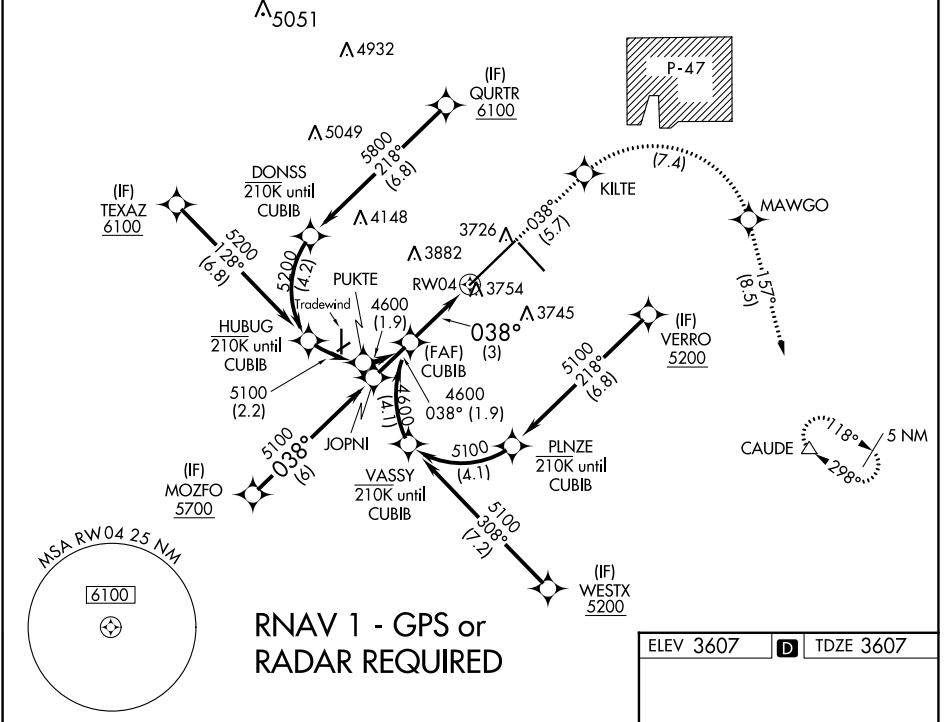
APP CRS	Rwy Idg	13502
038°	TDZE	3607
	Apt Elev	3607

RNAV (RNP) Z RWY 4

RICK HUSBAND AMARILLO INTL (AMA)

ASR	For uncompensated Baro-VNAV systems, procedure NA below -14°C (7°F) or above 53°C (128°F). RF required. GPS required. For inop ALS, increase RNP 0.30 all Cats visibility to 1 1/2 SM.	MALSRL	MISSED APPROACH: (Do not exceed 185K until MAWGO) Climb to 5400 on track 038° to KILTE, right turn to MAWGO, then track 157° to CAUDE and hold.

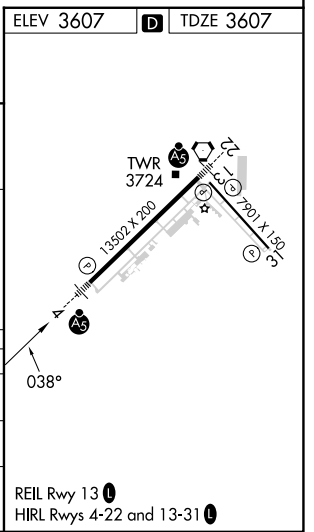
ATIS	AMARILLO APP CON*	AMARILLO TOWER*	GND CON	CLNC DEL	UNICOM
118.85 350.3	119.5 307.0	118.3(CTAF) 257.9	121.9 348.6	121.65 239.275	122.95



SC-2, 31 OCT 2024 to 28 NOV 2024

SC-2, 31 OCT 2024 to 28 NOV 2024

VGSI and RNAV glidepath not coincident (VGSI Angle 3.00/TCH 61).	5400 ↑ tr 038°	KILTE	MAWGO	CAUDE tr 157°
		See planview for multiple IF locations.		
GP 3.00° TCH 44	4600			



CATEGORY	A	B	C	D
RNP 0.12 DA		3969/40	362 (400-3/4)	
RNP 0.30 DA		4019/50	412 (500-1)	
AUTHORIZATION REQUIRED				