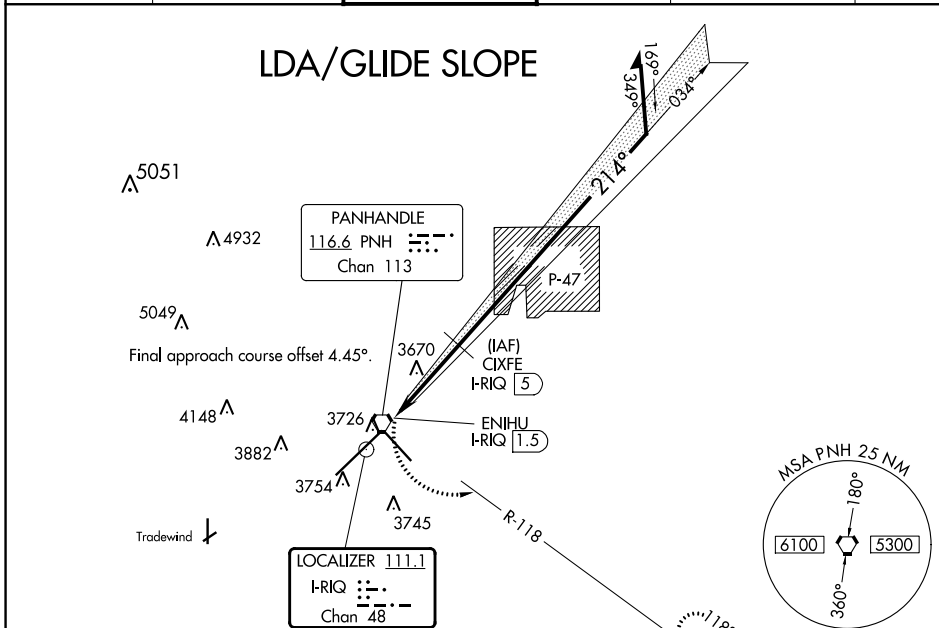


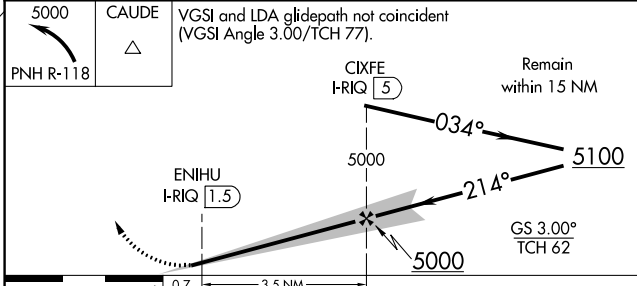
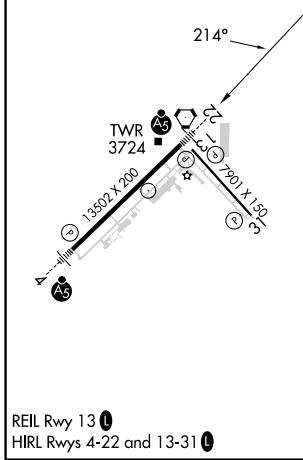
LOC/DME I-RQ <b>111.1</b> Chan <b>48</b>	APP CRS <b>214°</b>	Rwy Idg <b>13502</b> TDZE <b>3606</b> Apt Elev <b>3607</b>
--	------------------------	--

**LDA RWY 22**  
RICK HUSBAND AMARILLO INTL (AMA)

RADAR required for procedure entry.		MALS R-118	MISSED APPROACH: Climbing left turn to 5000 on PNH VORTAC R-118 to CAUDE and hold.	
For inop ALS, increase LDA/GS-22 all Cats visibility to 3/4 SM; increase LDA-22 Cat C/D/E visibility to 7/8 SM. Final approach course offset 4.45 degrees intersects the runway centerline 2509' from Rwy 22 thld.				
ATIS <b>118.85 350.3</b>	AMARILLO APP CON* <b>119.5 307.0</b>	AMARILLO TOWER* <b>118.3(CTAF) 257.9</b>	GND CON <b>121.9 348.6</b>	CLNC DEL <b>121.65 239.275</b>
			UNICOM <b>122.95</b>	



ELEV 3607	<b>D</b>	TDZE 3606
-----------	----------	-----------



CATEGORY	A	B	C	D	E
S-LDA/GS 22	3856-1/2 250 (300-1/2)				
S-LDA 22	3920-1/2	314 (400-1/2)		3920-3/4	314 (400-3/4)
<b>C</b> CIRCLING	4080-1	473 (500-1)	4240-1 3/4 633 (700-1 3/4)	4280-2 1/4 673 (700-2 1/4)	4460-3 853 (900-3)

SC-2, 31 OCT 2024 to 28 NOV 2024

SC-2, 31 OCT 2024 to 28 NOV 2024