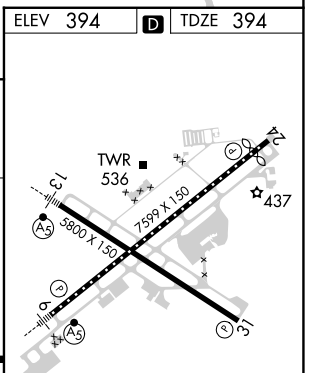
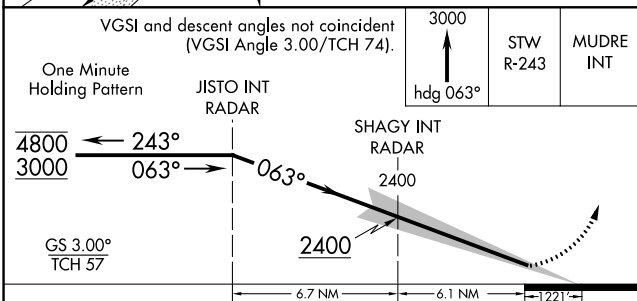
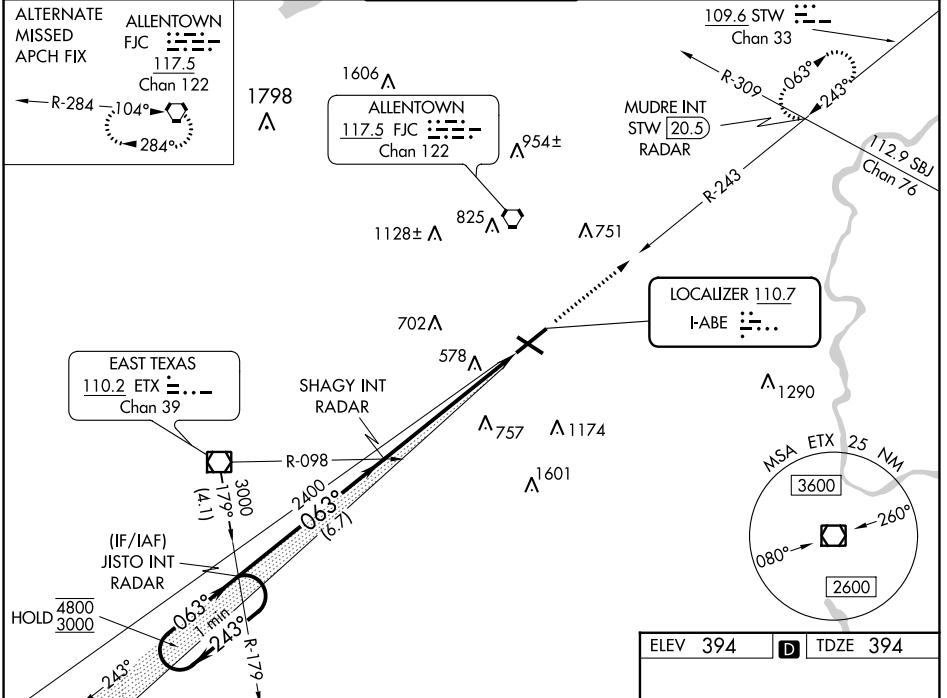


LOC I-ABE 110.7	APP CRS 063°	Rwy Idg TDZE Apt Elev	7599 394 394
---------------------------	------------------------	-----------------------------	---

ILS RWY 6 (SA CAT I & II)

LEHIGH VALLEY INTL (ABE)

▽ SA CAT I: Requires specific OPSPEC, MSPEC, or LOA approval and use of HUD to DH. SA CAT II: Reduced lighting: Requires specific OPSPEC, MSPEC, or LOA approval and use of autoland or HUD to touchdown.		MALSR 	MISSED APPROACH: Climb to 3000 on heading 063° and STW R-243 to MUDRE INT/STW 20.5 DME/ RADAR and hold.	
ATIS 126.975	ALLENTOWN APP CON 119.65 124.45 351.8	ALLENTOWN TOWER 120.5 257.95	GND CON 121.9 257.95	CLNC DEL 124.05 257.95



CATEGORY	A	B	C	D
S-ILS 6	SA CAT I	RA 154/14	150 DA 544	
S-ILS 6	SA CAT II	RA 114/12	100 DA 494	

ELEV 394	D	TDZE 394
----------	---	----------

REIL Rwy's 24 and 31
HIRL Rwy's 6-24 and 13-31

SA CATEGORY I & II ILS - SPECIAL AIRCREW & AIRCRAFT CERTIFICATION REQUIRED

NE-4, 31 OCT 2024 to 28 NOV 2024

NE-4, 31 OCT 2024 to 28 NOV 2024