

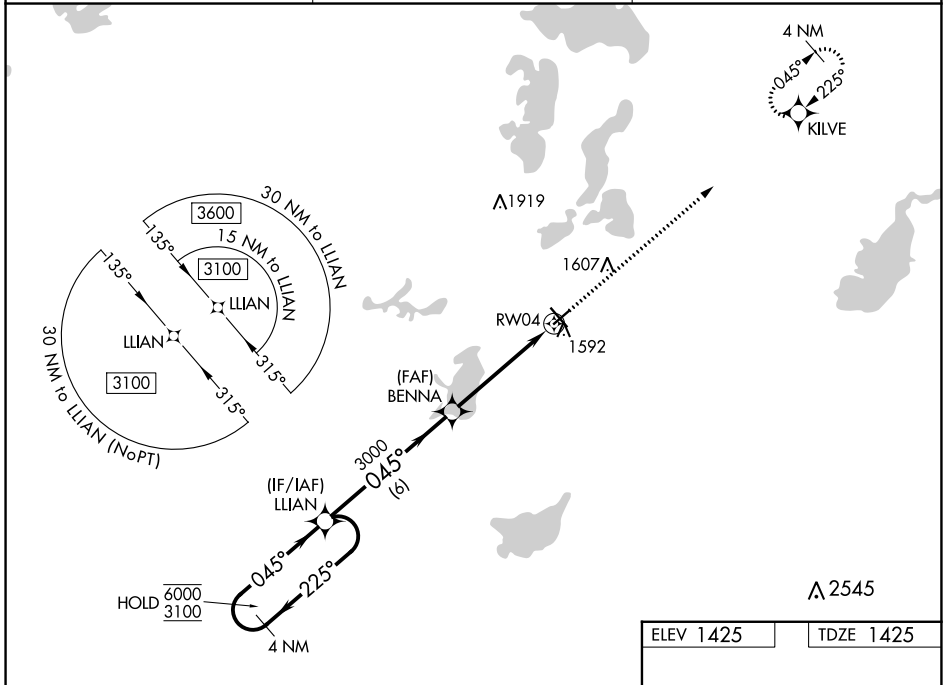
WAAS CH <b>90245</b> <b>W04A</b>	APP CRS <b>045°</b>	Rwy Idg TDZE Apt Elev	<b>4098</b> <b>1425</b> <b>1425</b>
--	------------------------	-----------------------------	---

# RNAV (GPS) RWY 4

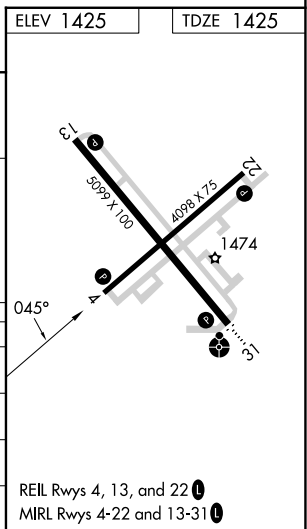
ALEXANDRIA RGNL/CHANDLER FLD (A.XN)

RNP APCH - GPS.	MISSED APPROACH: Climb to 3000 direct KILVE and hold.
<p>▼ Rwy 4 helicopter visibility reduction below 3/4 SM NA.</p> <p>▲ For uncompensated Baro-VNAV systems, LNAV/VNAV NA below -22°C or above 54°C.</p>	

ASOS <b>118.375</b>	MINNEAPOLIS CENTER <b>126.1 269.2</b>	UNICOM <b>123.0 (CTAF) 0</b>
------------------------	--	---------------------------------



4 NM Holding Pattern		LLIAN		3000 KILVE	
6000 ← 225°	3100 → 045°	BENNA		↑	
GP 3.00°		3000		1.2 NM to RWY 4	
TCH 44		6 NM		3.6 NM	
				1.2 NM	
CATEGORY	A	B	C	D	
LPV DA	1675-1		250 (300-1)		
LNAV/VNAV DA	1826-1 1/8		401 (500-1 1/8)		
LNAV MDA	1860-1	435 (500-1)	1860-1 1/4	435 (500-1 1/4)	
CIRCLING	1900-1	475 (500-1)	1940-1 1/2	2000-2	
			515 (600-1 1/2)	575 (600-2)	



REIL Rwy 4, 13, and 22 0  
MIRL Rwy 4-22 and 13-31 0

NC-1, 31 OCT 2024 to 28 NOV 2024

NC-1, 31 OCT 2024 to 28 NOV 2024