

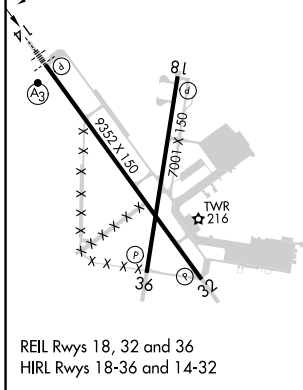
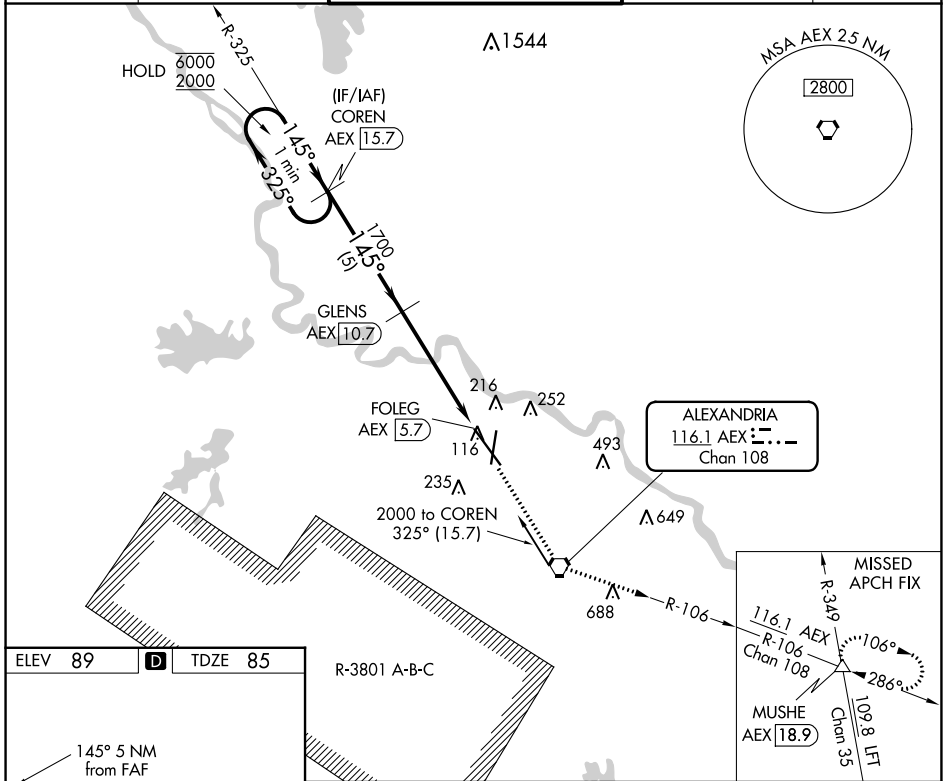
VORTAC AEX 116.1 Chan 108	APP CRS 145°	Rwy Idg TDZE 85 Apt Elev 89	9352
---	------------------------	---	-------------

VOR RWY 14

ALEXANDRIA INTL (AEX)

DME required.	SSALR	MISSED APPROACH: Climb to 4000 direct AEX VORTAC, then on AEX VORTAC R-106 to MUSHE INT and hold.
▼ When R-3801B active, RADAR required.	AS3	
▲ Rwy 14 helicopter visibility reduction below ¾ SM NA.		

ASOS 123.975	POLK APP CON 125.4 254.8	ALEXANDRIA TOWER 127.35 (CTAF) 269.2	GND CON 121.9 372.0	CLNC DEL 121.9
------------------------	------------------------------------	--	-------------------------------	--------------------------



ELEV 89		D	TDZE 85
R-3801 A-B-C			
VGSI and descent angles not coincident (VGSI Angle 3.00/TCH 71).			
One Minute Holding Pattern		COREN AEX 15.7	
6000	← 325°		
2000	→ 145°		
		1700	
			GLENS AEX 10.7
			AEX 6.7
			FOLEG AEX 5.7
			2.94° TCH 55
		5 NM	4 NM
			1 NM
CATEGORY	A	B	D
S-14	500/40	415 (500-¾)	500/55 415 (500-1)
CIRCLING	540-1 451 (500-1)	560-1 471 (500-1)	700-1¾ 611 (700-1¾)
			860-2½ 771 (800-2½)

SC-4, 18 MAY 2023 to 15 JUN 2023

SC-4, 18 MAY 2023 to 15 JUN 2023