

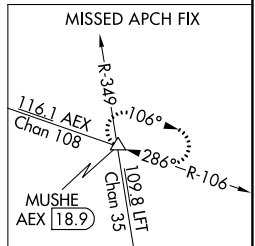
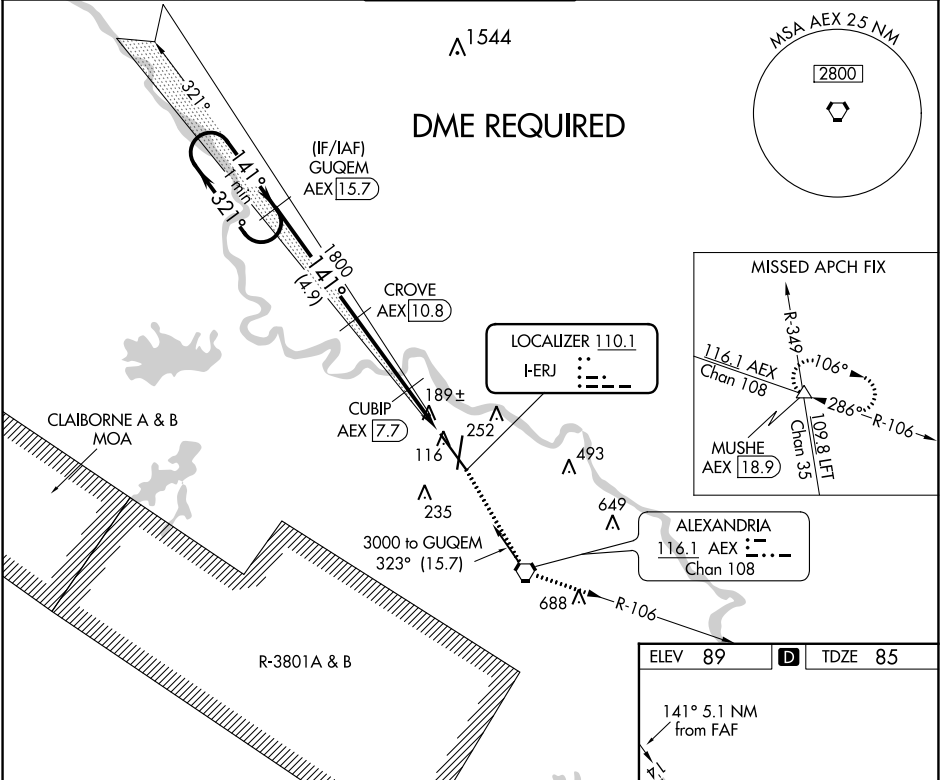
LOC I-ERJ <b>110.1</b>	APP CRS <b>141°</b>	Rwy Idg <b>9352</b> TDZE <b>85</b> Apt Elev <b>89</b>
---------------------------	------------------------	---

# ILS or LOC RWY 14

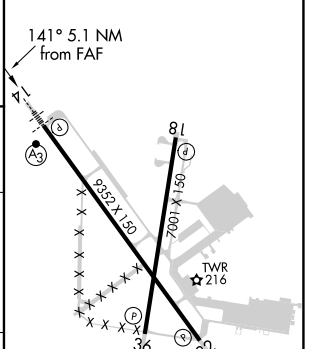
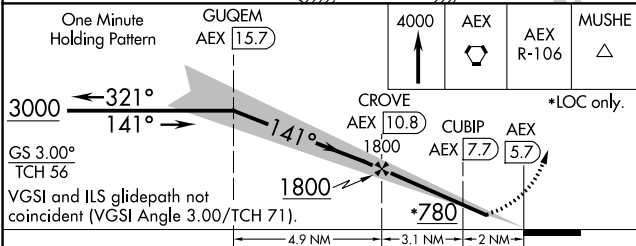
ALEXANDRIA INTL (AEX)

<b>▽</b> DME from AEX VORTAC. Simultaneous reception of I-ERJ and AEX DME required. When R-3801 B active, RADAR and DME required. <b>▲</b> DME required.	SSALR 	MISSED APPROACH: Climb to 4000 direct AEX VORTAC and on AEX VORTAC R-106 to MUSHE INT/18.9 DME and hold.
---	-----------	--

ASOS <b>123.975</b>	POLK APP CON <b>125.4 254.8</b>	ALEXANDRIA TOWER <b>127.35</b> (CTAF) <b>269.2</b>	GND CON <b>121.9 372.0</b>	CLNC DEL <b>121.9</b>
------------------------	------------------------------------	---	-------------------------------	--------------------------



ELEV 89	<b>D</b>	TDZE 85
---------	----------	---------



CATEGORY	A	B	C	D
S-ILS 14		346/24	261 (300-½)	
S-LOC 14		460/24	375 (400-½)	460/40 375 (400-¾)
CIRCLING	540-1 451 (500-1)	560-1 471 (500-1)	700-1¾ 611 (700-1¾)	860-2½ 771 (800-2½)

REIL Rwy 18, 32 and 36  
HIRL Rwy 18-36 and 14-32

SC-4, 18 MAY 2023 to 15 JUN 2023

SC-4, 18 MAY 2023 to 15 JUN 2023