

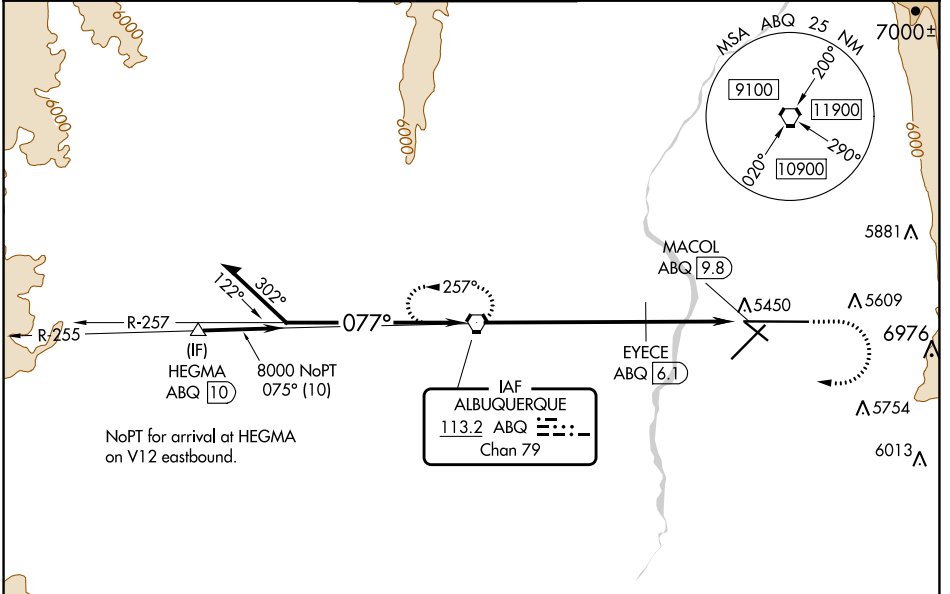
VORTAC ABQ 113.2 Chan 79	APP CRS 077°	Rwy Idg 12793 TDZE 5320 Apt Elev 5355
--	------------------------	--

VOR RWY 8

ALBUQUERQUE INTL SUNPORT (ABQ)

<p>▲ EYECE FIX MINIMUMS: For inop ALS, increase S-8 Cat C/D/E visibility to RVR 5500.</p> <p>ASR For inop ALS, increase S-8 Cat E visibility to 3 SM. Circling Cat E NA southeast of Rwy 3-21 and northeast of Rwy 12-30.</p>	<p>MALS R</p>	<p>MISSED APPROACH: Climb to 5800 then climbing right turn to 8000 direct ABQ VORTAC and hold.</p>

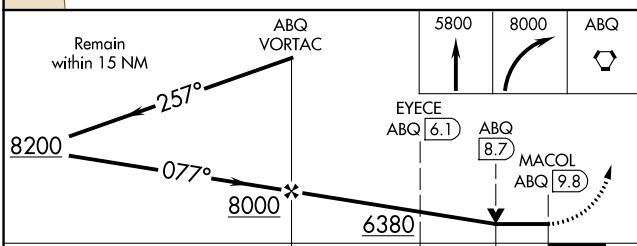
D-ATIS 118.0 257.7	ALBUQUERQUE APP CON 123.9 354.1	ALBUQUERQUE TOWER 120.3 351.9	GND CON 121.9 348.6	CLNC DEL 119.2 259.3	CPDLC
------------------------------	---	---	-------------------------------	--------------------------------	-------



SW-1, 03 OCT 2024 to 31 OCT 2024

SW-1, 03 OCT 2024 to 31 OCT 2024

ELEV 5355	D TDZE 5320
-----------	--------------------



CATEGORY	A	B	C	D	E
S-8	6380/40 1060 (1100-3/4)	6380/55 1060 (1100-1)	6380-2 1/2		1060 (1100-2 1/2)
CIRCLING	6380-1 1/4 1025 (1100-1 1/4)	6380-1 1/2 1025 (1100-1 1/2)	6380-3 1025 (1100-3)	6460-3 1105 (1200-3)	7460-3 2105 (2200-3)
EYECE FIX MINIMUMS					
S-8	5700/24	380 (400-1/2)	5700/40		380 (400-3/4)
CIRCLING	5840-1 485 (500-1)	5920-1 565 (600-1)	5940-1 1/2 585 (600-1 1/2)	6460-3 1105 (1200-3)	7460-3 2105 (2200-3)

MIRL Rwy 12-30
TDZ/CL Rwy 3 and 8
HIRL Rwy 3-21 and 8-26
REIL Rwy 21, 26, and 30

FAF to MAP 9.8 NM

Knots	60	90	120	150	180
Min:Sec	9:48	6:32	4:54	3:55	3:16