

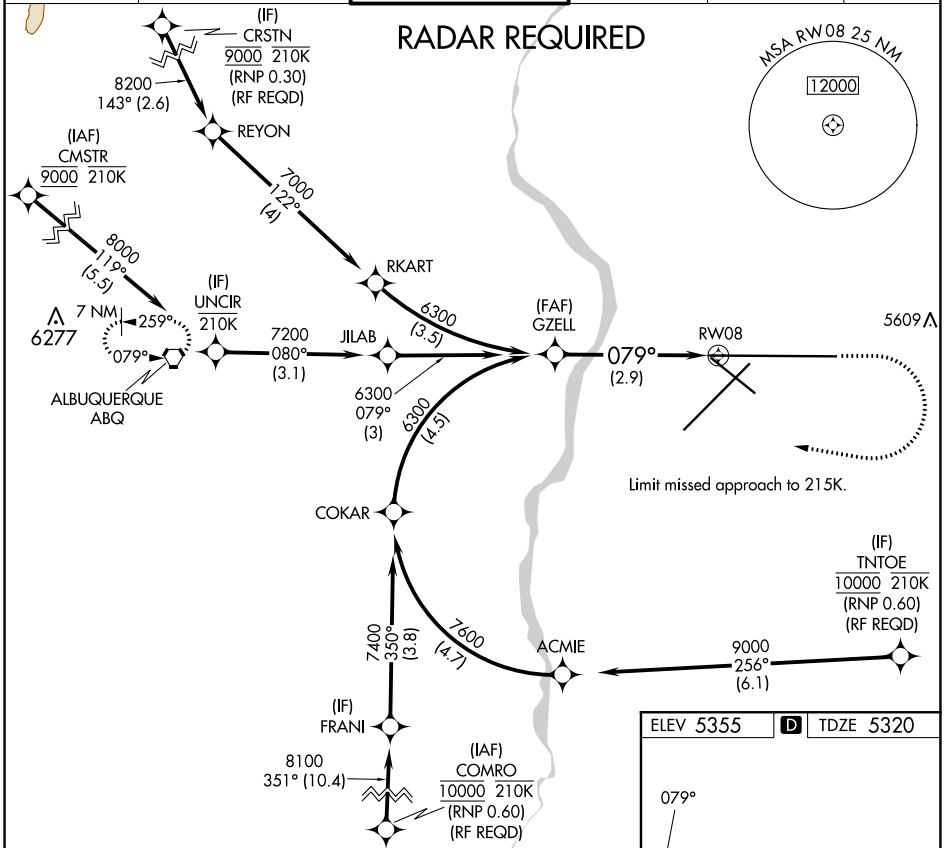
APP CRS 079°	Rwy Idg 12793
	TDZE 5320
	Apt Elev 5355

RNAV (RNP) Z RWY 8

ALBUQUERQUE INTL SUNPORT (ABQ)

For uncompensated Baro-VNAV systems, procedure NA below -12°C (11°F) or above 47°C (117°F). For inop MALSR, increase RNP 0.30 all Cats visibility to RVR 4700. GPS required.	MALSR	MISSED APPROACH: Climb to 5900 then climbing right turn to 8000 direct ABQ VORTAC and hold.

D-ATIS 118.0 257.7	ALBUQUERQUE APP CON 123.9 354.1	ALBUQUERQUE TOWER 120.3 351.9	GND CON 121.9 348.6	CLNC DEL 119.2 259.3	CPDLC
------------------------------	---	---	-------------------------------	--------------------------------	-------



GZELL 6300 GP 3.00° TCH 54 See planview for multiple IF locations. 2.9 NM	VGSi and RNAV glidepath not coincident (VGSi Angle 2.95/TCH 55).		5900 ↑	8000 ↘	ABQ ⬠
	CATEGORY A	B	C	D	
RNP 0.30 DA 5619/24 299 (300-½)					
AUTHORIZATION REQUIRED					

ELEV 5355	D TDZE 5320
-----------	--------------------

TWR 5333
13793 X 150
0.5% DOWN

MIRL Rwys 12-30
TDZ/CL Rwys 3 and 8
HIRL Rwys 3-21 and 8-26
REIL Rwys 21, 26, and 30

SW-1, 03 OCT 2024 to 31 OCT 2024

SW-1, 03 OCT 2024 to 31 OCT 2024