

| | | |
|-------------|----------|--------------|
| APP CRS | Rwy Idg | 10000 |
| 214° | TDZE | 5316 |
| | Apt Elev | 5355 |

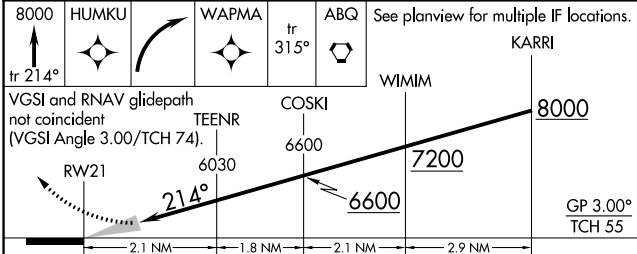
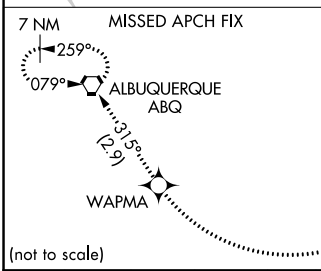
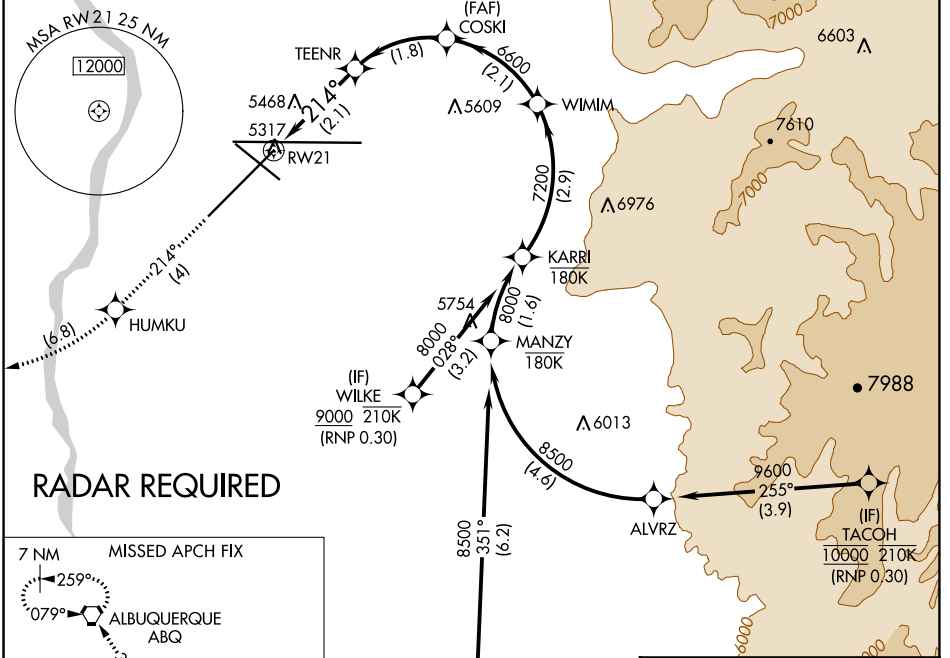
RNAV (RNP) Z RWY 21

ALBUQUERQUE INTL SUNPORT (ABQ)

ASR For uncompensated Baro-VNAV systems, procedure NA below -12°C (11°F) or above 47°C (116°F). RF required. GPS required.

MISSED APPROACH: Climb to 8000 on track 214° to HUMKU, right turn to WAPMA, then on track 315° to ABQ VORTAC and hold.

| | | | | | |
|--------------------|---------------------|--------------------|--------------------|--------------------|-------|
| D-ATIS | ALBUQUERQUE APP CON | ALBUQUERQUE TOWER | GND CON | CLNC DEL | CPDLC |
| 118.0 257.7 | 123.9 354.1 | 120.3 351.9 | 121.9 348.6 | 119.2 259.3 | |



| | | | | |
|-------------|---|---------|--------------|---|
| CATEGORY | A | B | C | D |
| RNP 0.30 DA | | 5755-1½ | 439 (400-1½) | |

| | |
|-----------|--------------------|
| ELEV 5355 | D TDZE 5316 |
|-----------|--------------------|

MRL Rwy 12-30
TDZ/CL Rwy 3 and 8
HIRL Rwy 3-21 and 8-26
REIL Rwy 21, 26, and 30

SW-1, 08 AUG 2024 to 05 SEP 2024

SW-1, 08 AUG 2024 to 05 SEP 2024

AUTHORIZATION REQUIRED